

## NOTES:

### CIVIL

All civil work e.g. site levels, shaping, retaining walls/structures paving layouts/substrates and storm water run-off/distribution as per Civil Engineers design and specifications.

### STRUCTURE

All structural work strictly as per Structural Engineers design and specifications. Any discrepancies between Architectural and Structural drawings to be reported immediately

### PAVING

Substrate and stormwater run-off as per Civil Engineers specification.

### GAS INSTALLATION NOTES:

Gas installation as per registered gas installer to be used and to provide Certificate of Conformity on completion. All occupancy penetrations and service crossing / paralld runs to gas lines as per Mech Engineers specification. All installations and piping to comply with the requirements of the Occupational Health and Safety Act (Act 85 of 1993) and SANS 10087-1.

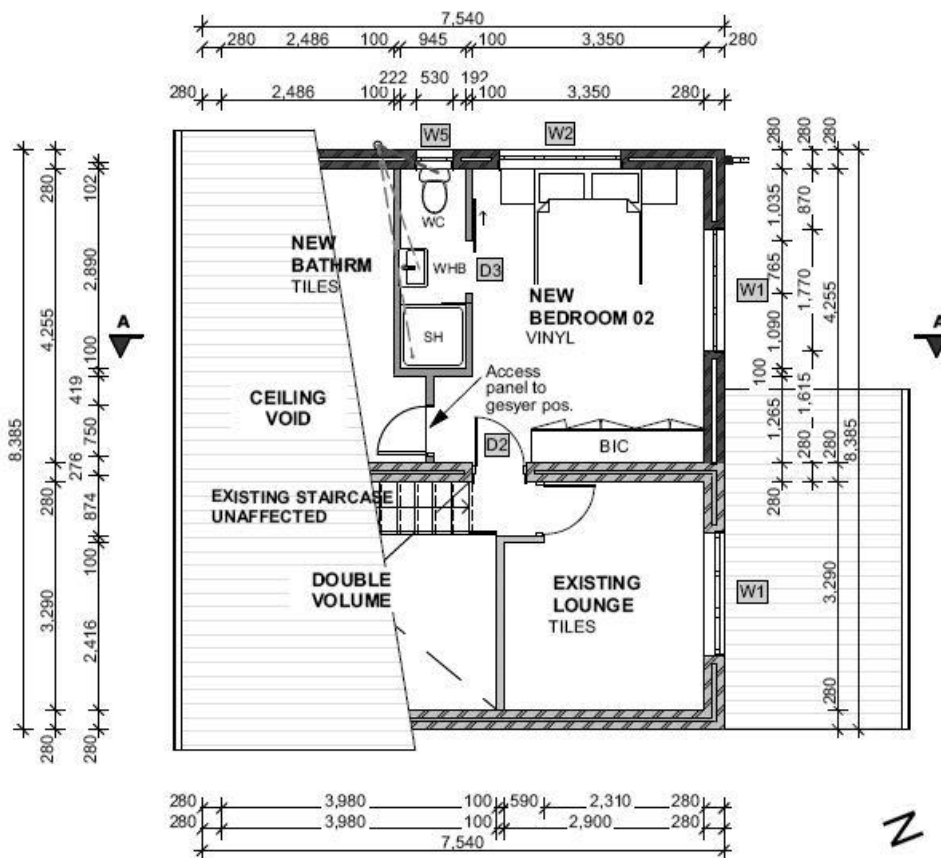
Gas bottles may not be installed:

- Less than 1 metre sideways from doors and windows.
- Less than 2 metres from drains and air vents.
- Less than 3 metres below windows (unless a non-combustible roof is installed)
- Less than 3 metre from the property boundary wall (unless it is a fire wall)
- Less than 5 metres sideways away from a switchable electric point or plug switch;
- Light bulbs cannot be less than 1.5 metres above a gas bottle.

### HANDRAILS:

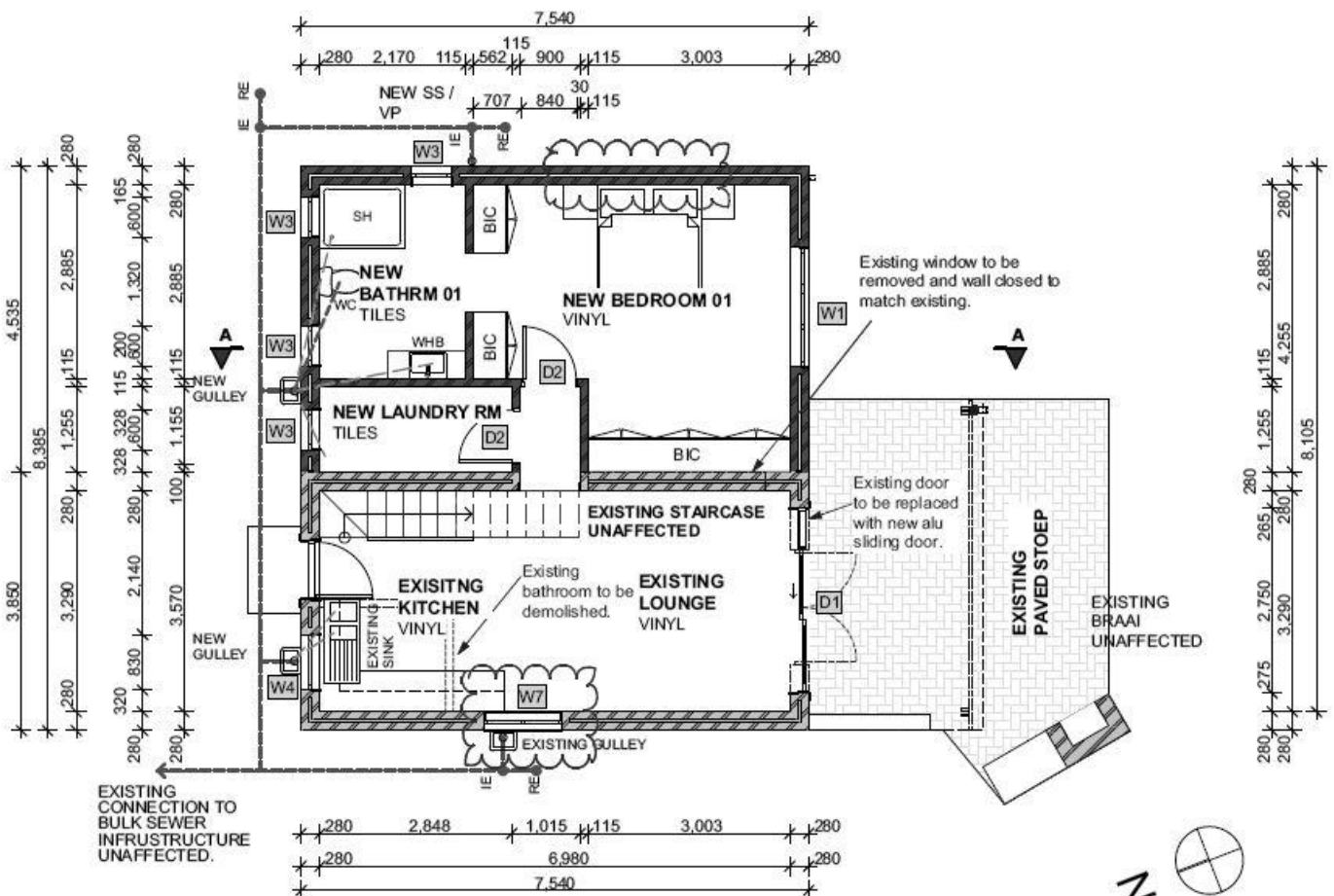
Max spacing of all horizontal and vertical members 100mm.

All as per SPECIALIST DESIGN, SUPPLY AND INSTALLATION to comply with SANS 10400 Part B and SANS 10610-2:2010 Part 2. Certificate of conformity to all SANS requirement to be provided on completion.



## FIRST LEVEL PLAN

SCALE 1:100



## GROUND LEVEL PLAN

SCALE 1:100