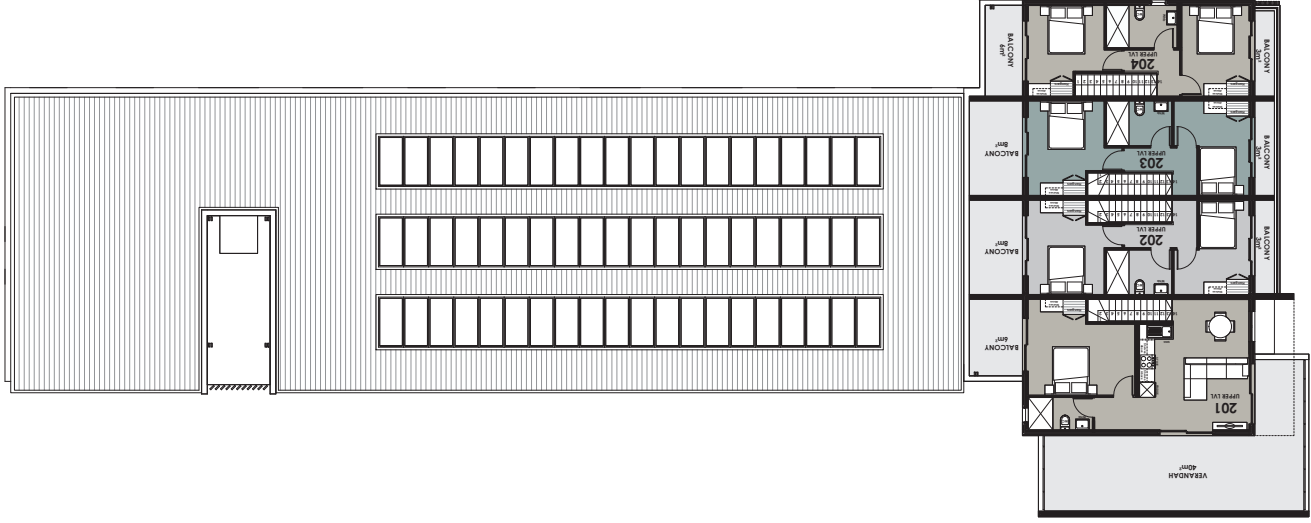


The floor plan illustrates the layout of the first floor, featuring a central corridor system and various specialized rooms. The 'VEHICLE ENTRANCE' is prominently located at the top right, leading into a large hall. To the left of this hall is a 'PARKING AREA' and a 'LANDSCAPING' area. The central part of the plan contains a series of numbered rooms (1-41) and a 'WALKWAY'. A 'STAIRWELL C1' and 'STAIRWELL C2' are situated near the center. The bottom of the plan shows a 'RECEPTION' area, a 'LABORATORY', and a 'LANDSCAPING' area. The plan also includes a 'WALKWAY' and a 'WALKWAY' labeled 'TO LEAVE CAMPUS'. The building is oriented with a north arrow pointing towards the top left.

DATE	DESCRIPTION
2025-11-27	
GORDON HART ARCHITECTS	
135 Richmond Avenue, Kentworth, Cape Town Tel: 021 462 7788 Email: info@gordonhart.co.za	
FOR INFORMATION	
NEW RESIDENTIAL DEVELOPMENT	
ERP 64873	
81 Richmond Avenue, Kentworth, Cape Town	
Client:	JRK CAPE PROPERTIES (PTY) LTD
Architect Signature:	
Owner Signature:	
	
0 5 10 15 DISTANCE TO BE MEAS IN A NOT SCALED ON THIS DRAWING	
GROUND + 1st FLOOR	
KENTWORTH 64873	
17.26	
2025-11-27	
REVISED	

3rd FLOOR PLAN

1:100 [on A1]



2nd FLOOR PLAN

1:100 [on A1]

