



## COURTYARD HOMES

These medium-sized freestanding homes are positioned around a beautifully landscaped green space where neighbours can connect, and children can play. Some of the homes have a flatlet that can be used as a home office, granny flat, teenage hangout spot or income-generating rental apartment.

FROM

**R3,750,000**

AVAILABLE FROM

**116m<sup>2</sup>**

SINGLE AND DOUBLE STOREY  
2 AND 3 BEDROOM HOMES

FIND YOUR HOME

**newinbosch**  
NEIGHBOURHOOD ESTATE



## COURTYARD HOME



Come and visit our Courtyard Home Show house at Newinbosch Neighbourhood Estate

# COURTYARD HOME (CY-SS-1)

SINGLE STOREY FROM R3,750,000

2  
BEDROOMS

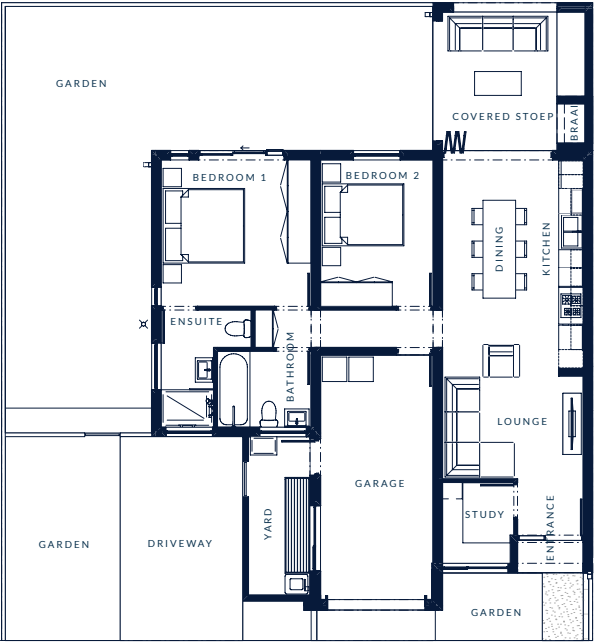
2  
BATHROOMS

1  
GARAGE

1  
PARKING BAY

From 241m<sup>2</sup>  
ERF SIZE

PETS  
WELCOME



GROUND FLOOR

UNIT CY-SS-1	
COVERED PATIO	14.17
GARAGE	20.86
GROUND FLOOR	81.07
	116.10m <sup>2</sup>

(Note: These Renders / Floor plans are West-Facing, an East Orientation is available as well.)

Note: These renders represent typical units.  
Please refer to the floor plans for specific details and variations.

# COURTYARD HOME (CY-SS-2)

SINGLE STOREY FROM R4,095,000

2  
BEDROOMS

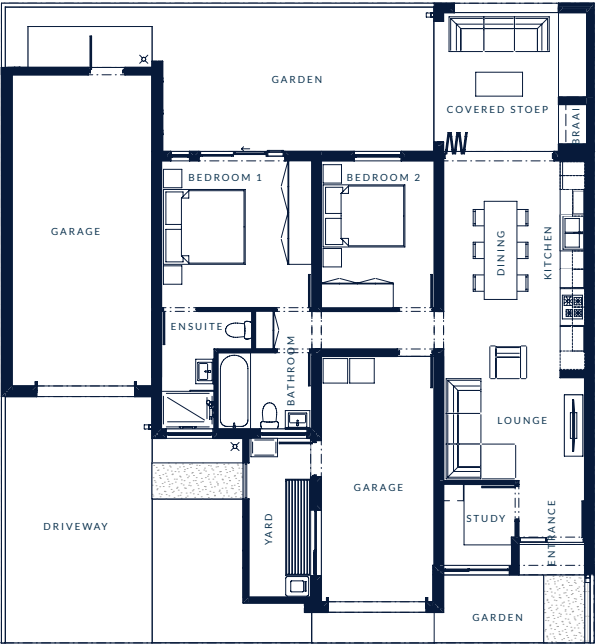
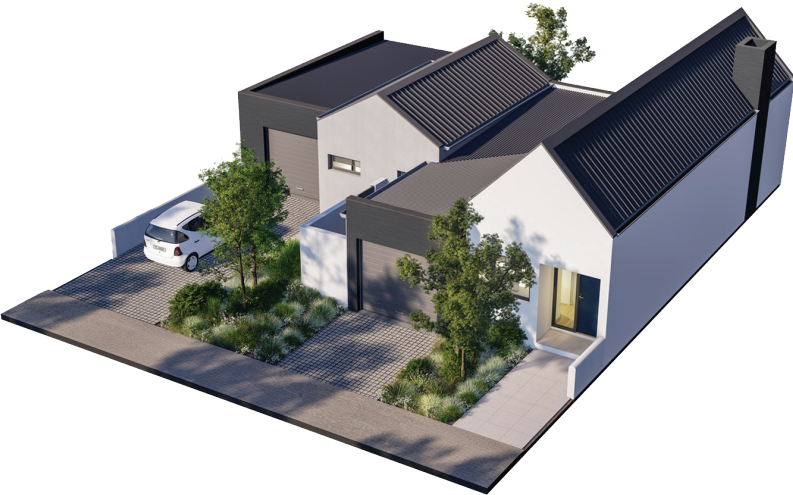
2  
BATHROOMS

2  
GARAGES

2  
PARKING BAYS

From 285m<sup>2</sup>  
ERF SIZE

PETS  
WELCOME



GROUND FLOOR

UNIT CY-SS-2	
COVERED PATIO	14.17
GARAGE 1	20.86
GARAGE 2	30.15
GROUND FLOOR	81.07
	146.25m <sup>2</sup>

(Note: These Renders / Floor plans are West-Facing, an East Orientation is available as well.)

Note: These renders represent typical units.  
Please refer to the floor plans for specific details and variations.



# COURTYARD HOME + APARTMENT (CY-SS-3)

SINGLE STOREY FROM R4,365,000

  
**2**  
BEDROOMS

  
**2**  
BATHROOMS

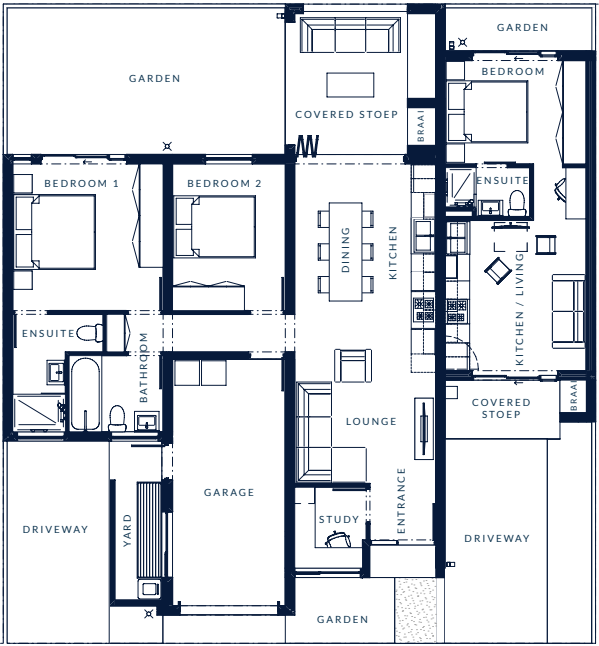
  
**APARTMENT**  
1 BED & 1 BATHROOM

  
**1**  
GARAGE

  
**2**  
PARKING BAYS

  
**From 285m<sup>2</sup>**  
ERF SIZE

  
**PETS**  
WELCOME



GROUND FLOOR

UNIT CY-SS-3	
COVERED PATIO	14.40
APT. PATIO	4.93
GARAGE	20.86
GROUND FLOOR	81.07
APT. SIZE	29.62
	150.88m <sup>2</sup>

(Note: These Renders / Floor plans are West-Facing, an East Orientation is available as well.)

Note: These renders represent typical units.  
Please refer to the floor plans for specific details and variations.

# COURTYARD HOME (CY-DS-1)

DOUBLE STOREY FROM R4,495,000

3  
BEDROOMS

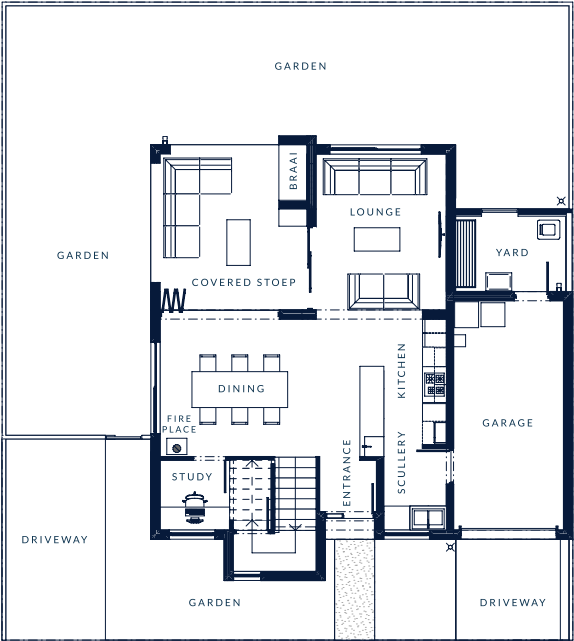
2  
BATHROOMS

1  
GARAGE

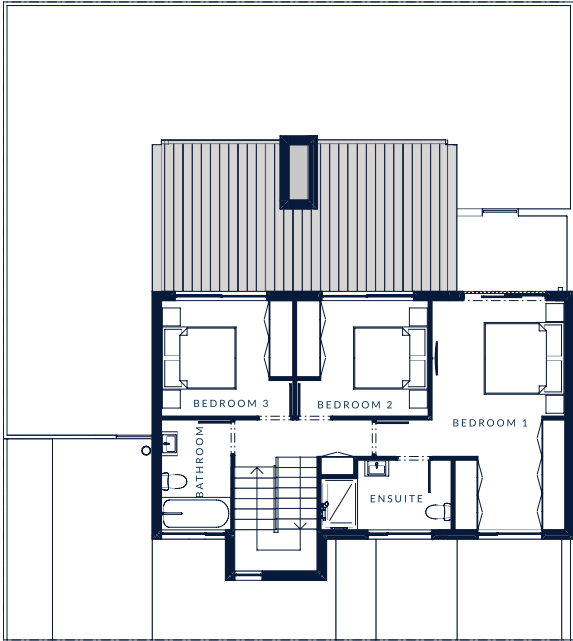
2  
PARKING BAYS

From 241m<sup>2</sup>  
ERF SIZE

PETS  
WELCOME



GROUND FLOOR



FIRST FLOOR

Note: These renders represent typical units.  
Please refer to the floor plans for specific details and variations.

UNIT CY-DS-1	
COVERED PATIO	16.39
GARAGE	18.57
GROUND FLOOR	61.85
FIRST FLOOR	63.07
	159.88m <sup>2</sup>

(Note: These Renders / Floor plans are West-Facing,  
an East Orientation is available as well.)



# COURTYARD HOME (CY-DS-2)

DOUBLE STOREY FROM R4,750,000

3  
BEDROOMS

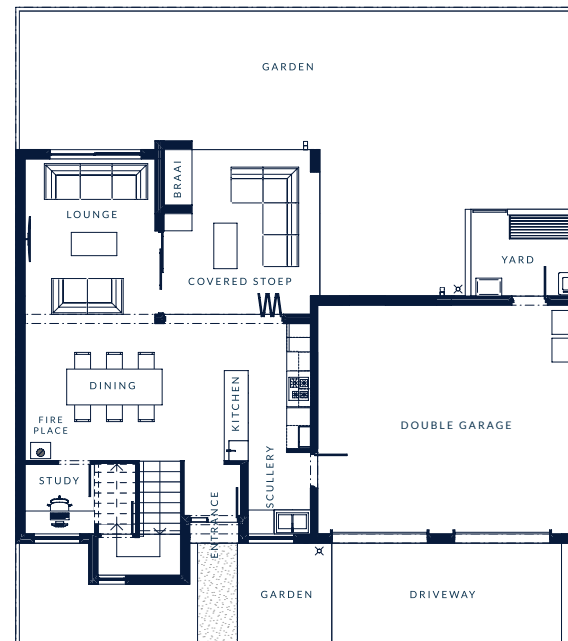
2  
BATHROOMS

2  
GARAGES

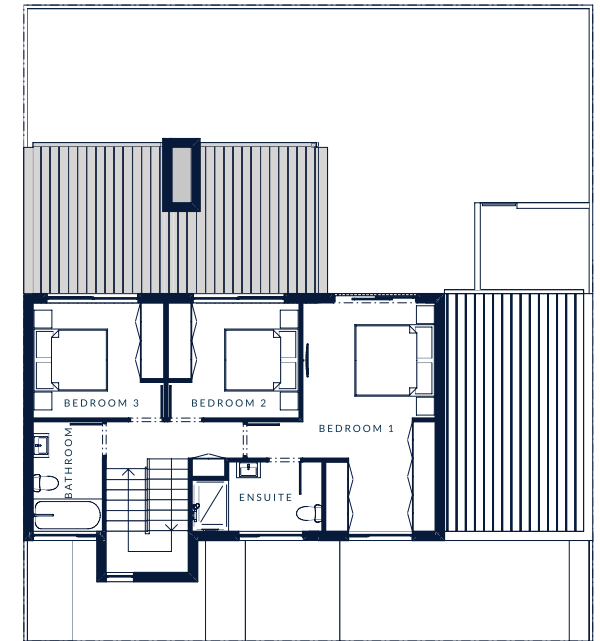
2  
PARKING BAYS

From 246m<sup>2</sup>  
ERF SIZE

PETS  
WELCOME



GROUND FLOOR



FIRST FLOOR

Note: These renders represent typical units.  
Please refer to the floor plans for specific details and variations.

UNIT CY-DS-2	
COVERED PATIO	16.28
GARAGE	41.73
GROUND FLOOR	61.79
FIRST FLOOR	63.00
	182.80m <sup>2</sup>

(Note: These Renders / Floor plans are East-Facing,  
a West Orientation is available as well.)

# COURTYARD HOME + APARTMENT (CY-DS-3)

DOUBLE STOREY FROM R5,250,000

  
**3**  
BEDROOMS

  
**2**  
BATHROOMS

  
**APARTMENT**  
1 BED & 1 BATHROOM

  
**1**  
GARAGE

  
**2**  
PARKING BAYS

  
**From 285m<sup>2</sup>**  
ERF SIZE

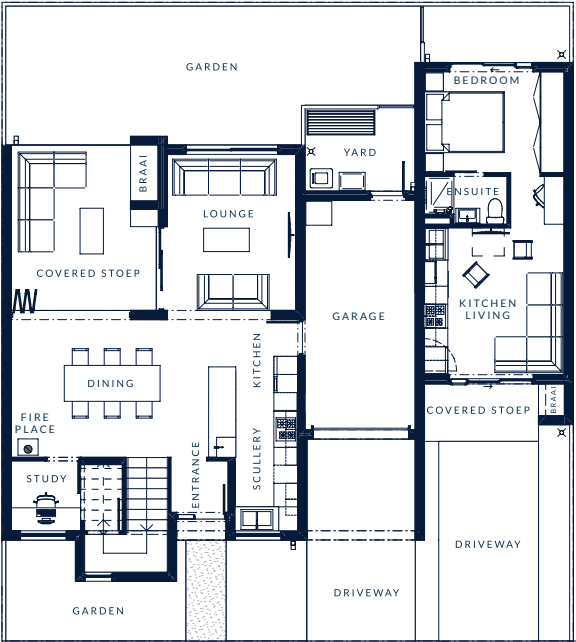
  
**PETS**  
WELCOME



*Note: These renders represent typical units.  
Please refer to the floor plans for specific details and variations.*

UNIT CY-DS-3	
COVERED PATIO	16.39
APT. PATIO	5.01
GARAGE	18.57
GROUND FLOOR	61.62
FIRST FLOOR	63.00
APT. SIZE	30.77
	195.36m <sup>2</sup>

*(Note: These Renders / Floor plans are West-Facing,  
an East Orientation is available as well.)*

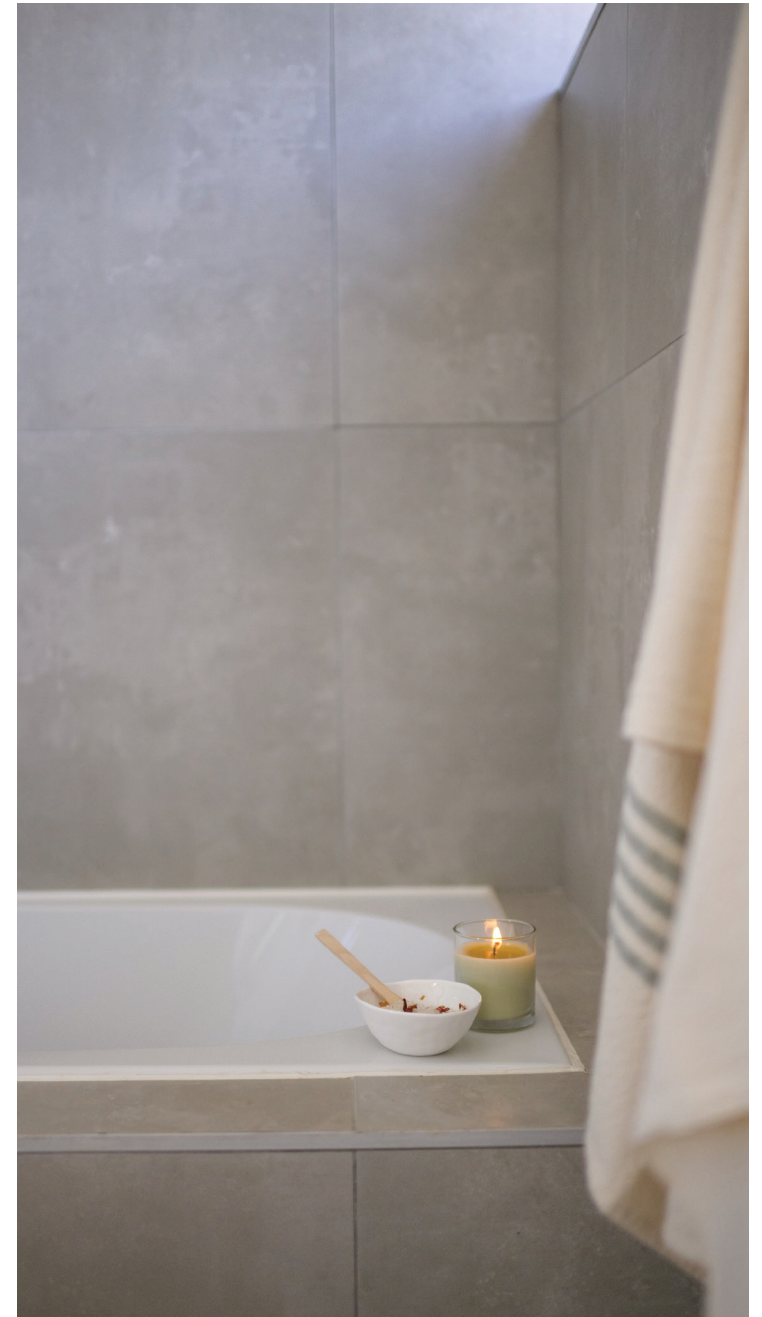


GROUND FLOOR



FIRST FLOOR





Come and visit our Courtyard Home Show house at Newinbosch Neighbourhood Estate





### **Did you know when you purchase a property at Newinbosch:**

- Transfer fees are included (save up to R30,000)
- No transfer duty is required
- VAT is included

### **Do you love what you've seen?**

Here are the next steps to secure your new home or investment in Newinbosch

- Reserve your property online or directly through our agents
- Pay your R10,000 deductible deposit
- Sign the Offer to Purchase (OTP)

**Our agents will guide you every step of the way!**

[CONTACT US](#)

**newinbosch**  
NEIGHBOURHOOD ESTATE