



LIVE IN HARMONY WITH NATURE





WELCOME TO YOUR NEW OASIS IN PAARL

ABOUT AVEC LA TERRE

Avec la Terre is an exclusive lifestyle estate meticulously designed to blend luxury living with environmental consciousness. Indulge in an unparalleled lifestyle that cherishes ecological balance, while enjoying the finest amenities and breathtaking natural surroundings.

Nestled in the picturesque Cape Winelands, Avec la Terre is more than just a place to live; it's a testament to sustainable luxury. Here, we've crafted a haven that seamlessly merges the splendour of nature with the elegance of modern living.

At the core of Avec la Terre lies a profound commitment to sustainability. Our homes are not just houses; they are a statement of our dedication to eco-friendly living. From the materials we use to the energy-saving technologies we implement and eco-friendly construction practices, every detail is carefully planned to ensure a minimal ecological footprint.



LIFESTYLE ESTATE

DISCOVER THE EPITOME OF LUXURY LIVING

Avec la Terre is an exceptional estate, where comfort, sustainability, privacy and nature intertwine. But sustainable living doesn't mean compromising on luxury. In fact, Avec la Terre redefines luxury living.

Brought to you by LEE Developers, each home is a masterpiece of design, crafted with the utmost attention to detail. Each home is strategically designed to maximise the spacious interiors and take advantage of the stunning views.

While Avec la Terre meets all your lifestyle needs, you and your family are also protected through state-of-the-art security systems and personnel. In addition, the local authority, Drakenstein Municipality, is one of the top performing municipalities in the country, making Paarl an extremely attractive prospect for investment.





ANTEIN ROAD (DR1095)

ACCESS 2

WESTLEIGH CRESCENT (12m)

FERNWOOD ROAD (12m)

Community Park

CORMORANT STREET (12m)

BRICKLEAF CRESCENT (12m)

BRICKLEAF CRESCENT (12m)

CLOVELLY STREET (12m)

GLENROSA CRESCENT (12m)

GLENROSA CRESCENT (12m)

GLENROSA CRESCENT (12m)

GLENROSA CRESCENT (12m)

GLENROSA CRESCENT (12m)

GLENROSA CRESCENT (12m)

GLENROSA CRESCENT (12m)

GLENROSA CRESCENT (12m)

GLENROSA CRESCENT (12m)

GLENROSA CRESCENT (12m)

GLENROSA CRESCENT (12m)

5m BUILDING LINE RESTRICTION

EXISTING WELL-SERVICED

R301 (MR201)
25.14m wide



THE PROPERTIES

UNPARALLELED HOME FEATURES FOR SUPERIOR COMFORT

All homes are strategically designed to ensure that the living or entertainment areas face north to maximise natural light, making energy consumption very low. Larger stands provide ample space and more privacy, with mountain views and indigenous landscaping.

Designed by Bruce Wilson Architects, each residence provides optimal indoor comfort with construction principles that ensure good air quality, reduced noise and increased energy efficiency.

UNIQUELY YOURS WITH A DISTINCTIVE IDENTITY

There are five home designs with expansive stands that you can choose from. The larger erven can also be tailored to your unique needs with optional lifestyle extras. Owners of residences 3, 4 and 5 can consult with our design and landscape architects to provide these personal touches to your new home.

AN ESTATE THAT MATCHES YOUR LIFESTYLE AND SAFETY NEEDS

To ensure your safety and that of your family's, Avec la Terre has implemented the very latest technology and security measures. These include state-of-the-art access controls, fibre optic communication, taut fencing, heat sensor thermal cameras and trusted personnel.

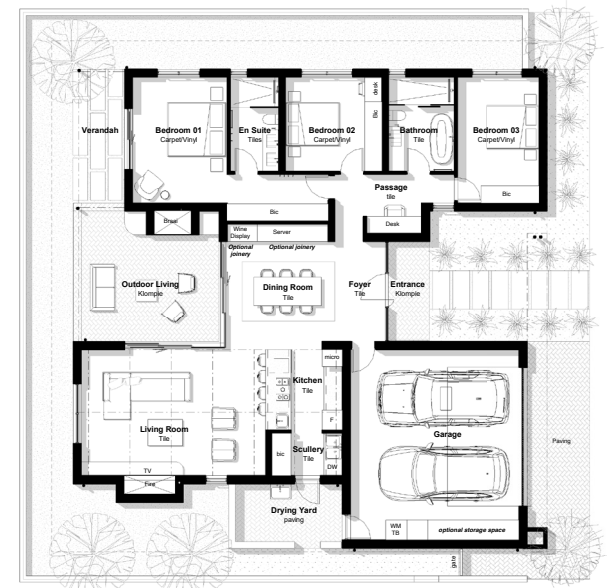
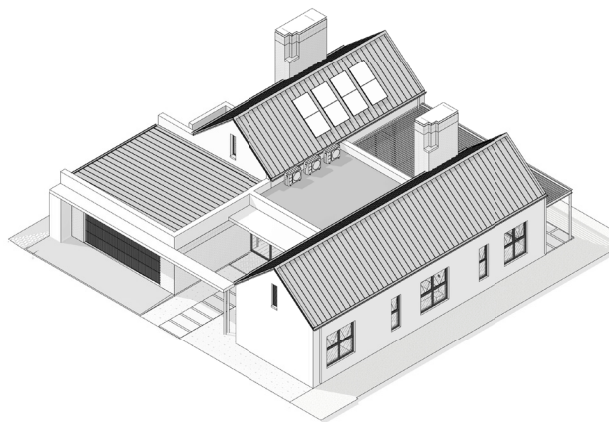
WHERE SUSTAINABILITY AND ATTENTION TO DETAIL MERGE

Off-grid living is achieved with active and passive systems, while solar inverters and a gas infrastructure ensure that the estate is loadshedding proof. Avec la Terre's carbon footprint is reduced through environmental and eco-friendly practices, and the estate has grey water irrigation for gardens as well as stormwater harvesting dams and wetlands.



RESIDENCE 1

- Erf size: 357-600sqm
- Size of house: 201sqm (+ 37sqm pergola)
- 3 bedroom
- 2 bathroom
- Double garage

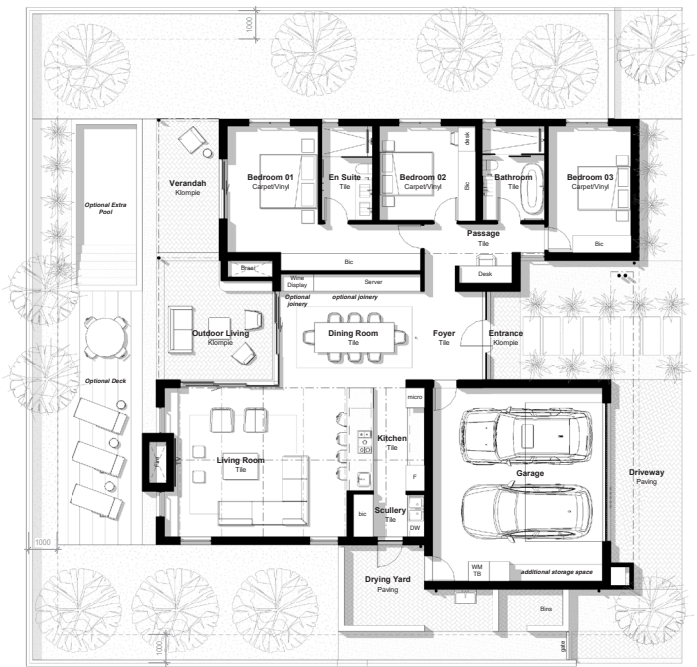
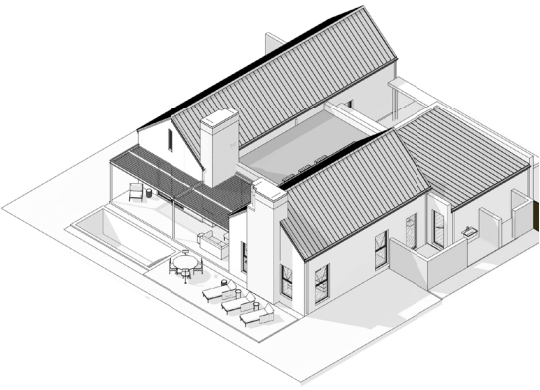


Ground Floor Plan
1 : 100



RESIDENCE 2

- Erf size: 480-700sqm
- Size of house: 213sqm (32sqm pergola)
- 3 bedroom
- 2 bathroom
- Double garage

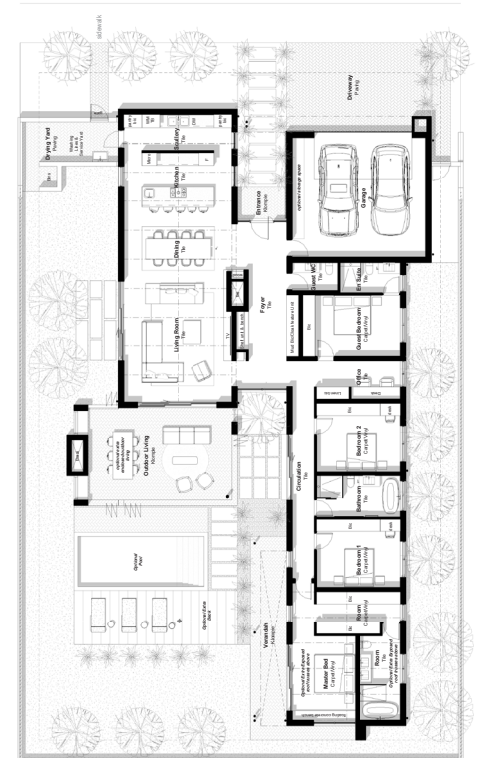
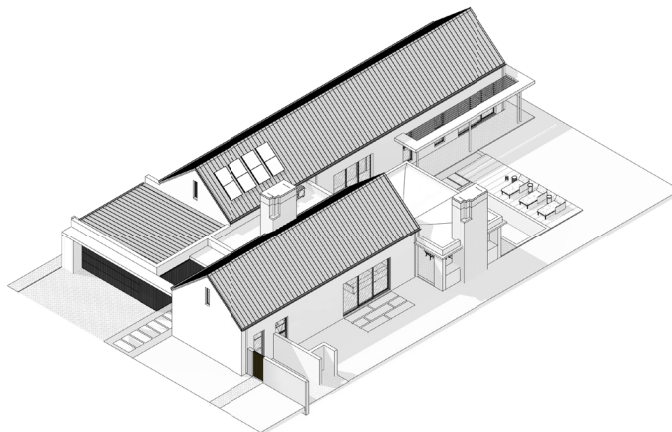


Ground Floor Plan
1 : 100

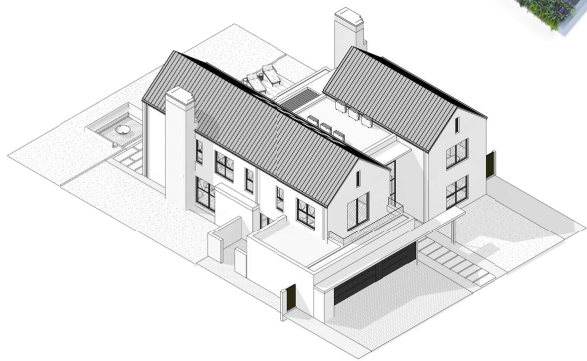


RESIDENCE 3

- Erf size: 650-850sqm
- Size of house: 299sqm (+ 41sqm patio with concrete roof)
- 4 bedroom
- 3,5 bathroom
- Double garage
- Structural and cosmetic optional extras according to Avec la Terre's building guidelines



Ground Floor Plan



RESIDENCE 4

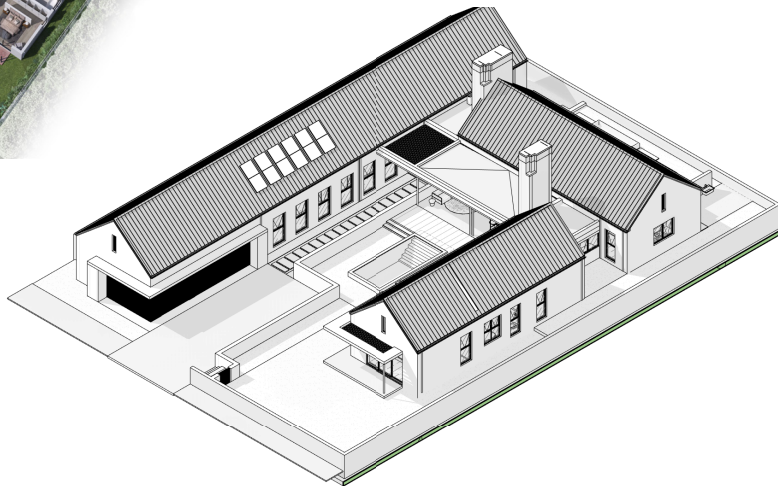
- Erf size: 800-1606sqm
- Size of house: 400sqm (45sqm concrete roof patio + 9sqm balcony)
- 5 bedroom
- 5,5 bathroom
- 2 + 1 garages
- Structural and cosmetic optional extras according to Avec la Terre's building guidelines



Ground Floor Plan
1: 100

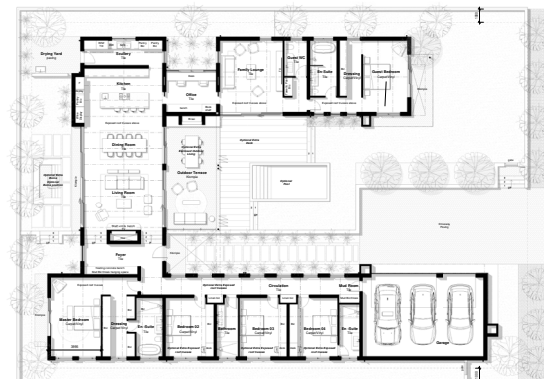


First Storey Plan
1: 100



RESIDENCE 5

- Erf size: 800-1606sqm
- Size of house min : 440sqm (48sqm concrete roof patio & entrance)
- 5 bedroom
- 4,5 bathroom
- 2 + 1 garages
- Structural and cosmetic optional extras according to Avec la Terre's building guidelines





SUPERIOR DESIGN

METICULOUS ATTENTION TO DETAIL

Every aspect of Avec la Terre has been crafted to provide an exceptional living experience. From sleek architecture to premium interior finishes, we are redefining what luxury living truly means.

Luxury finishes

Avec la Terre incorporates exceptional finishes and premium appliances into all residences. These include tiles or timber-look vinyl, matt black aluminium framed windows, Geberit sanitaryware, Hansgrohe taps, Franke sanitaryware and SMEG appliances.

Standard features

All homes include inverters, battery storage, solar panels, exposed roof trusses and air conditioning in bedrooms and living areas.

Additional extras*

Customise your home's design features to your unique needs. Lifestyle add-ons include underfloor heating, flooring upgrade to Oggie, different glazing, gas heaters and fireplaces, timber decks, pools, garages with added joinery/storage units, additional battery storage and landscaping upgrades. Residence 4 has the option to include green roofs, while residences 3, 4 and 5 allow for feature wine rack joinery units, bomas, pergolas, pool/entertainment houses and enclosable outdoor living areas.

**The developer may amend and/or substitute items at their discretion if items are no longer available, are in short supply or if there are price increases beyond their control.*



COMMUNITY AMENITIES

WHERE NATURAL BEAUTY, RECREATION AND CONVENIENCE MERGE

Avec la Terre's generous outdoor spaces, onsite amenities and local area attractions will enrich everyday life. Experience the outdoors through running and walking tracks, seasonal fishing spots, and local mountain biking and trail running. Unwind through yoga sessions and spa treatments and connect with your community at the estate's parks, outdoor fitness equipment, and organic natural lap pool and pond area with a beach.

The estate has a wetland and kids' play park, which provides ample opportunities for your little ones to play freely and explore. Get convenient access to a fynbos reserve and unleash your sporting spirit at the well-equipped sports centre or nearby prime sports fields and venues, including a gym and padel courts, and neighbouring golf courses, including Pearl Valley Golf Course and Boschenmeer Golf Club.



PRIME LOCATION

EXPERIENCE THE WINELANDS LIFESTYLE

Avec la Terre is perfectly positioned on the most desired land in the valley. Located between the iconic Simonsberg and Drakenstein mountain ranges, the estate offers a picturesque backdrop for your dream lifestyle.

Live in the Cape Winelands Golden Mile, where you can indulge in the essence of country living, surrounded by world-class wine farms, restaurants and attractions. Centrally located between Paarl and Franschhoek, with access to Stellenbosch University, top schools, shopping centres, hospitals and countless local attractions.

The estate's proximity to Paarl, Franschhoek, Stellenbosch and Cape Town, enables residents to enjoy a country lifestyle with urban conveniences. Cape Town International Airport is a 40-minute drive away, simplifying travel logistics and providing convenient access to local and global destinations.



CRAFTING LUXURIOUS LIFESTYLE ESTATES



THE DEVELOPERS

LEE Developers, where innovation in property development meets a steadfast commitment to crafting luxury energy efficient estates. Our name, an acronym for Luxury Energy Efficient Estates, embodies the guiding values and principles that infuse every facet of our work. With an unwavering pursuit of excellence, we reimagine luxury living by seamlessly intertwining it with sustainability, envisioning a future where opulence and ecological responsibility harmoniously coexist.

At the heart of our efforts stands our philosophy personified – the Avec la Terre Lifestyle Estate. A testament to our commitment to innovative and sustainable luxury, this exclusive estate merges opulent living with eco-consciousness. Within these walls, it's our vision for residents to embrace an unparalleled lifestyle that treasures ecological balance, while enjoying premier amenities and breathtaking natural surroundings.



THE BUILDERS

The Cape Estates group has been in operation for over 30 years, offering custom and tailormade ad hoc property development and construction services to clients and developers.

The team's experience, combined with a commitment to excellence, ensures that they consistently deliver quality products. The Cape Estates group is immensely proud of all developments and pride themselves on their top quality and the finishing of each project, delivered to each client in budget and on time.

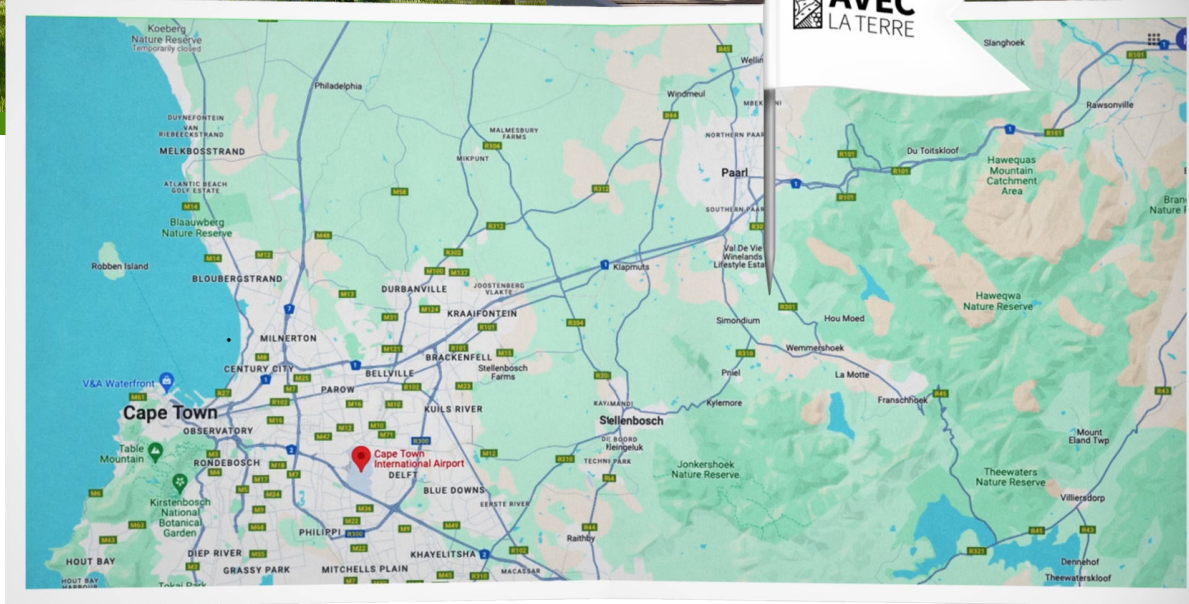


AVEC
LA TERRE

Be a part of our vision, to experience a lifestyle where sustainability and luxury coexist. Together, we are not just building homes; we are shaping the future of living in the Cape Winelands.

Come, be a part of something extraordinary.

gps coordinates - 33°49'31.31"S - 19° 0'12.73"E



GET IN TOUCH

Amanda Colombo

Chas Everitt Luxury Winelands Sales



083 258 1212



amanda.c@everitt.co.za

CHAS EVERITT
INTERNATIONAL PROPERTY GROUP