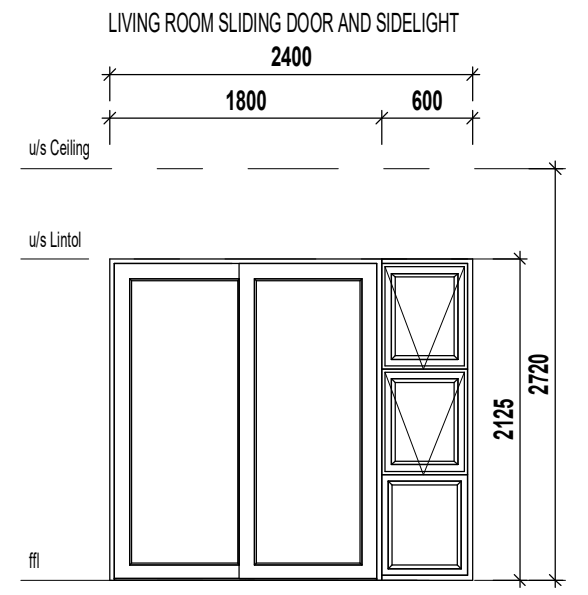
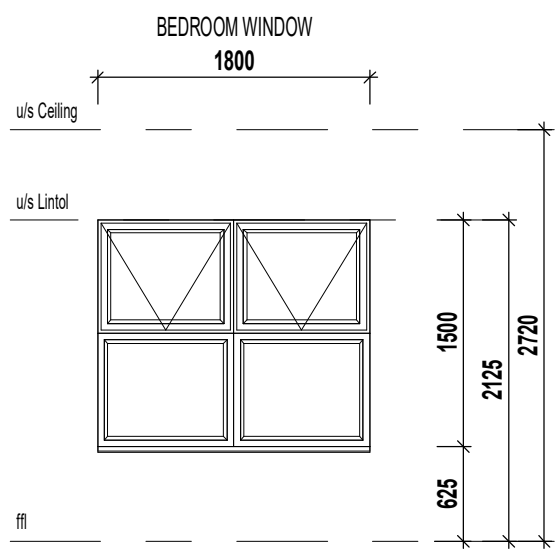
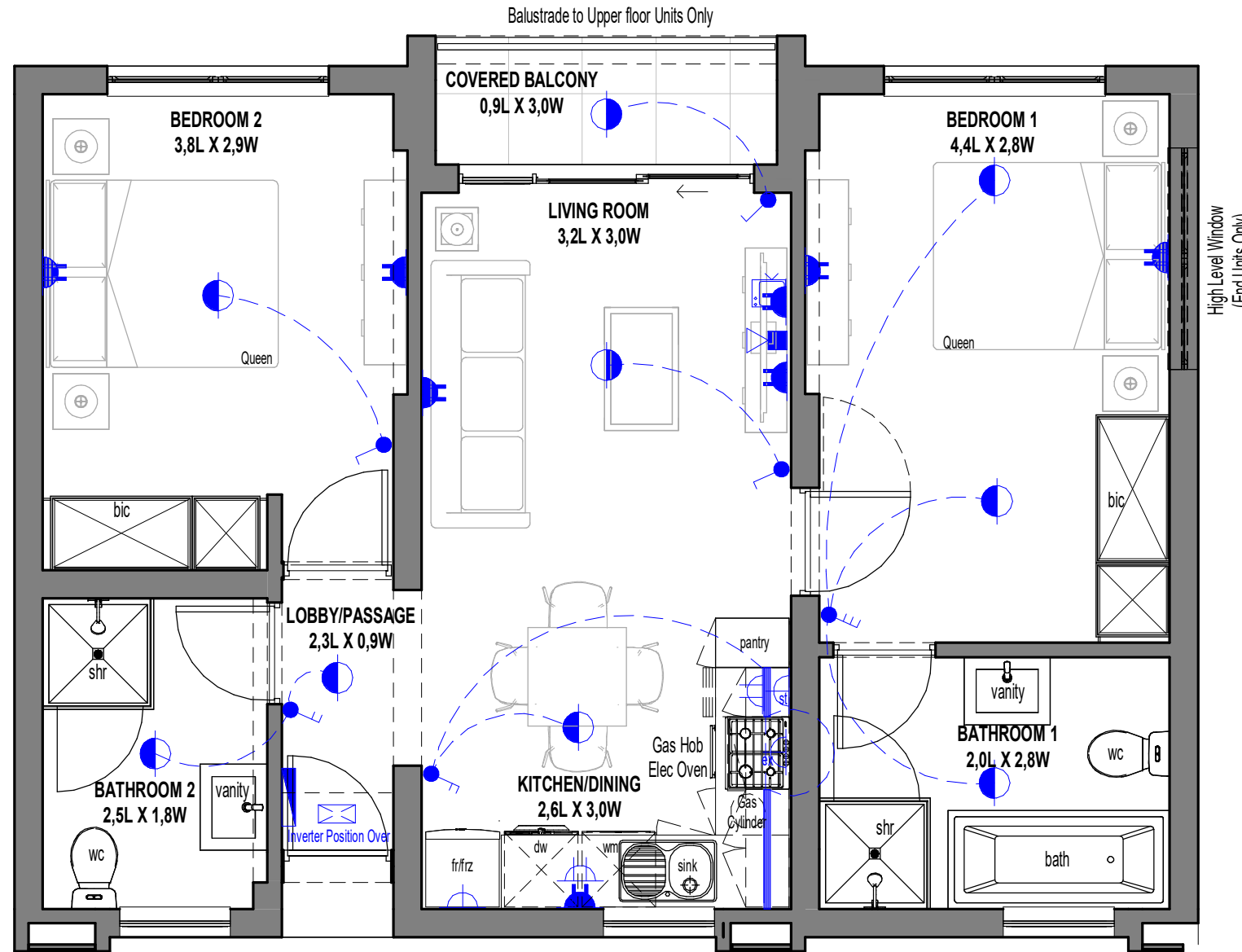


ANNEXURE C FLOOR PLAN



2 Bedroom - 2 Bathroom

SCALE 1:50

D6

- ELECTRICAL LEGEND**
- Surface Mounted LED Fitting
 - External Wall Mounted LED Light Fitting
 - LED Strip Light Fitting (u/s - Eye levels - Kitchen)
 - Single Light Switch
 - Double Light Switch
 - Triple Light Switch
 - Two-Way Light Switch
 - Single Plug Point (300mm Above FFL)
 - Double Plug Point (300mm Above FFL)
 - Single Plug Point (150mm Above Counter)
 - Double Plug Point (150mm Above Counter)
 - Stove Isolator (Above Counter)
 - Extractor Plug (High Level)
 - Distribution Board
 - TV Point
 - Fibre / Data Point
 - Inverter

AREA TYPE D6

Floor Area	65.36 m ²
Balcony	2.96 m ²
Total	68.32 m ²

* The areas are approximate and shall vary from the areas reflected on the sectional title plan