



DEVELOPMENTS

**GREENWAYS ESTATE
MANOR HOUSE FLOOR PLANS**



SOUTHERN SUBURBS 021 671 0258

d g p r o p e r t i e s . c o . z a



DEVELOPMENTS

COMPANY PARTICULARS

Established in 2002, DG Properties has proven to be a true real estate success story. The DG name has become synonymous with the proficient and effective marketing and selling of premium grade properties in Cape Town and particularly the sought-after Atlantic Seaboard. DG currently have offices in high profile positions in Sea Point and Southern Suburbs.

DG Properties prides itself on its unique and focused approach to marketing and sales, providing a comprehensive and tailored solution to ensure that sales occur at the optimum price within a compressed space of time. The company utilizes an evolved and distinctive sales force of highly adept and skilled sales agents who are selected for their extensive experience, professionalism and successful track records.

Headed by Managing Director Alexa Horne, DG Properties has a dedicated in-house marketing department ensuring that focused and specialized marketing strategies are implemented. The powerful proprietary DG database combined with its eye-catching and prominent advertising, both in print and digital media, together with our visible network of sales offices support our strong performance on the Western Cape's Atlantic Seaboard, Southern Suburbs, Western Seaboard and surrounding areas.

DOGON GROUP (PTY) LTD
REGISTRATION NO: 2002/020365/07
REGISTERED WITH THE PPRA - FFC No. F110941
ALEXA HORNE (MANAGING DIRECTOR)

P O BOX 605 SEA POINT 8060
THE KINGS, 101 REGENT ROAD
SEA POINT, SOUTH AFRICA
TEL +27 21 433 2580
FAX +27 21 433 2781

SALES AGENT

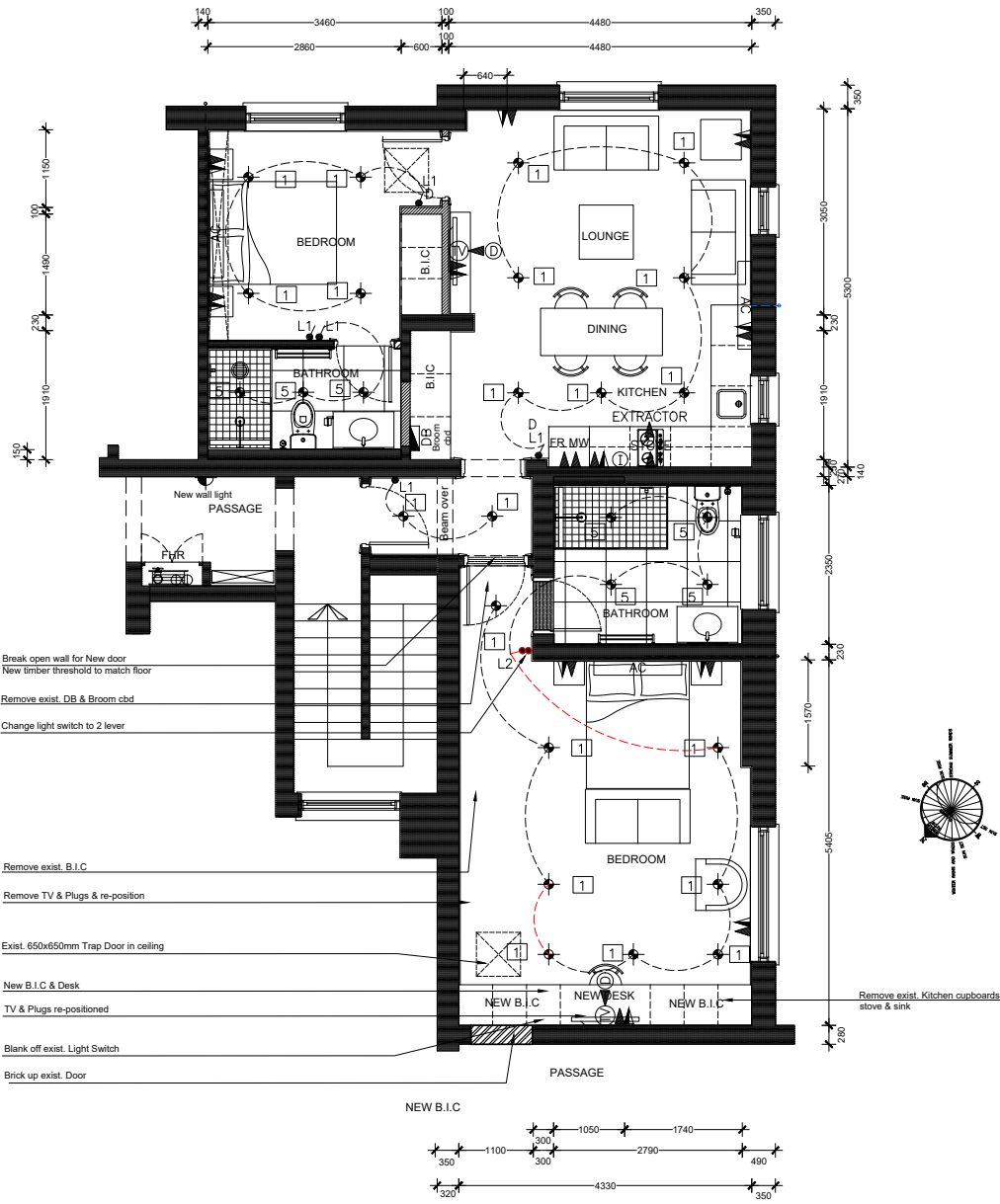


TONY BREDEKAMP
083 602 6113
tony@dgproperties.co.za

Registered with the PPRA - Full Status Agent - FFC No. 0373080

SOUTHERN SUBURBS **021 671 0258**

d g p r o p e r t i e s . c o . z a



COMBINED SECTION 11 & 12: (Iris & Silvertree)
 FLOOR LAYOUT
 SCALE: 1:50

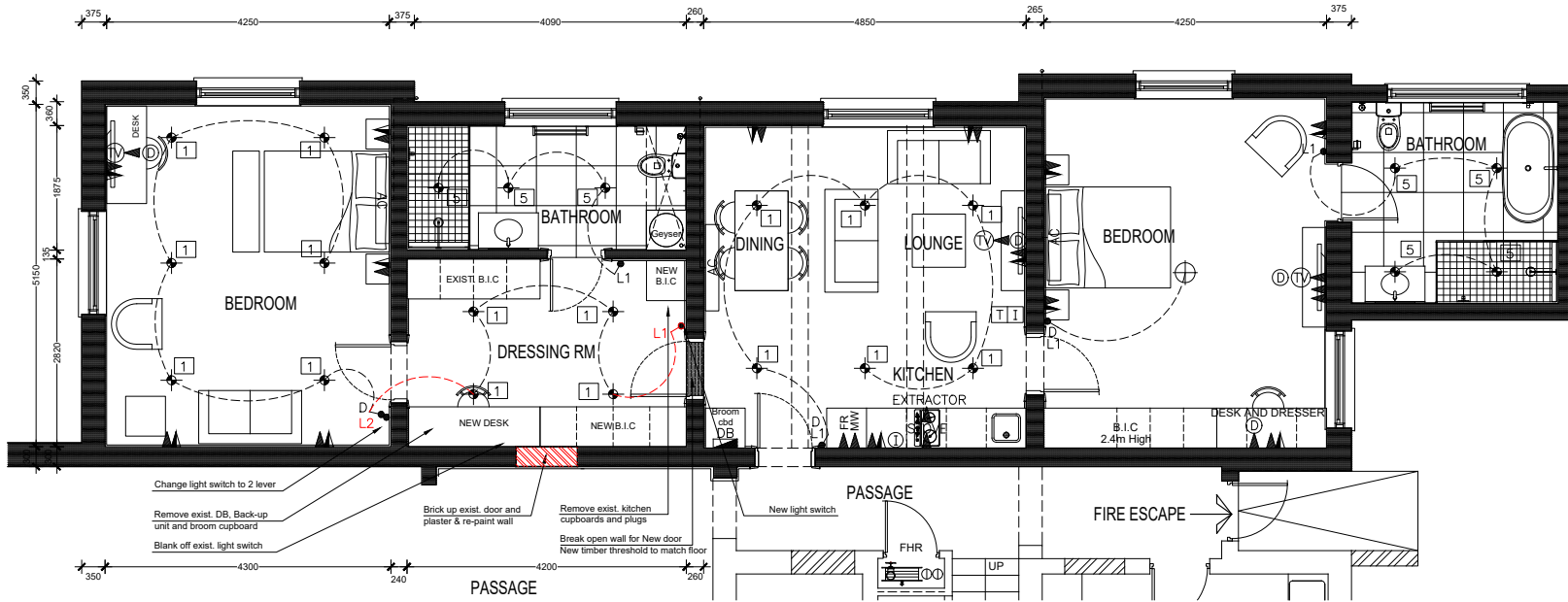
LIGHTING LEGEND

DESCRIPTION:	'Lights by Lined' CODE:
1] NEW DOWNLIGHTER	LRD 36
2] NEW PENDANT	PEN 715BLK
3] NEW LED BULKHEAD FITTING	CF367 LED POLYCARBONATE
4] NEW BULKHEAD FITTING	OHIO - ROUND
5] NEW DOWNLIGHTER	LRD 52
6] NEW WALL LIGHT	ADRAY WL
7] NEW EXTERNAL FOOTLIGHT	TAJ CTC
8] NEW WALL SCNCE	RW133 ARUM
9] REFURBISH EXIST. CHANDELER AS PER REFURB LIGHT SCHEDULE	
10] REFURBISH EXIST. CHANDELER AS PER REFURB LIGHT SCHEDULE	
11] NEW PENDANT FITTING	WRG0025 DOME WOVEN PEN
12] REFURB EXIST. LIBRARY CHANDELER AS PER REFURB LIGHT SCHEDULE	
13] REFURB EXIST. LIBRARY SCNCES AS PER REFURB LIGHT SCHEDULE	
14] REFURB EXIST. CHANDELER (FITTING T.B.C) AS PER REFURB LIGHT SCHEDULE	
15] REFURB EXIST. CHANDELER (FITTING T.B.C) AS PER REFURB LIGHT SCHEDULE	
16] REFURB EXIST. CHANDELER (FITTING T.B.C) AS PER REFURB LIGHT SCHEDULE	
17] WHITE UP/DOWN EXTERIOR FITTING	METRO TWIN
18] REFURB EXIST. SCNCES FROM ROOMS AS PER REFURB LIGHT SCHEDULE	

ELECTRICAL LEGEND

MEASUREMENTS ARE FROM FFL TO UNDERSIDE OF FITTING

	NEW STANDARD PLUG(Height as Indicated)
	SINGLE PLUG (Height as Indicated)
	WATERPROOF PLUG POINT @ 300 AFFL
	STOVE CONNECTION @ 300 AFFL
	1 LEVER LIGHT SWITCH @1100
	2 LEVER LIGHT SWITCH @1100
	3 LEVER LIGHT SWITCH @1100
	1 LEVER LIGHT SWITCH-2WAY @1100
	2 LEVER LIGHT SWITCH-2WAY @1100
	3 LEVER LIGHT SWITCH-2WAY @1100
	DIMMER SWITCH @1100
	RECESSED DOWN LIGHTER
	FLUSH MOUNTED CEILING LIGHT
	SUSPENDED CEILING LIGHT
	WALL LIGHT - as indicated
	WATERPROOF LIGHT
	FLUORESCENT LIGHT
	TELEVISION + DATA
	TELEPHONE / INTERCOM
	METER
	DISTRIBUTION BOARD
	ISOLATOR @ 1100 AFFL



COMBINED SECTION 2 & 3: (Rose & Protea)
FLOOR LAYOUT
 SCALE: 1:50

Note: Dimensions indicated on plan are taken to finished plastered walls

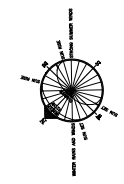
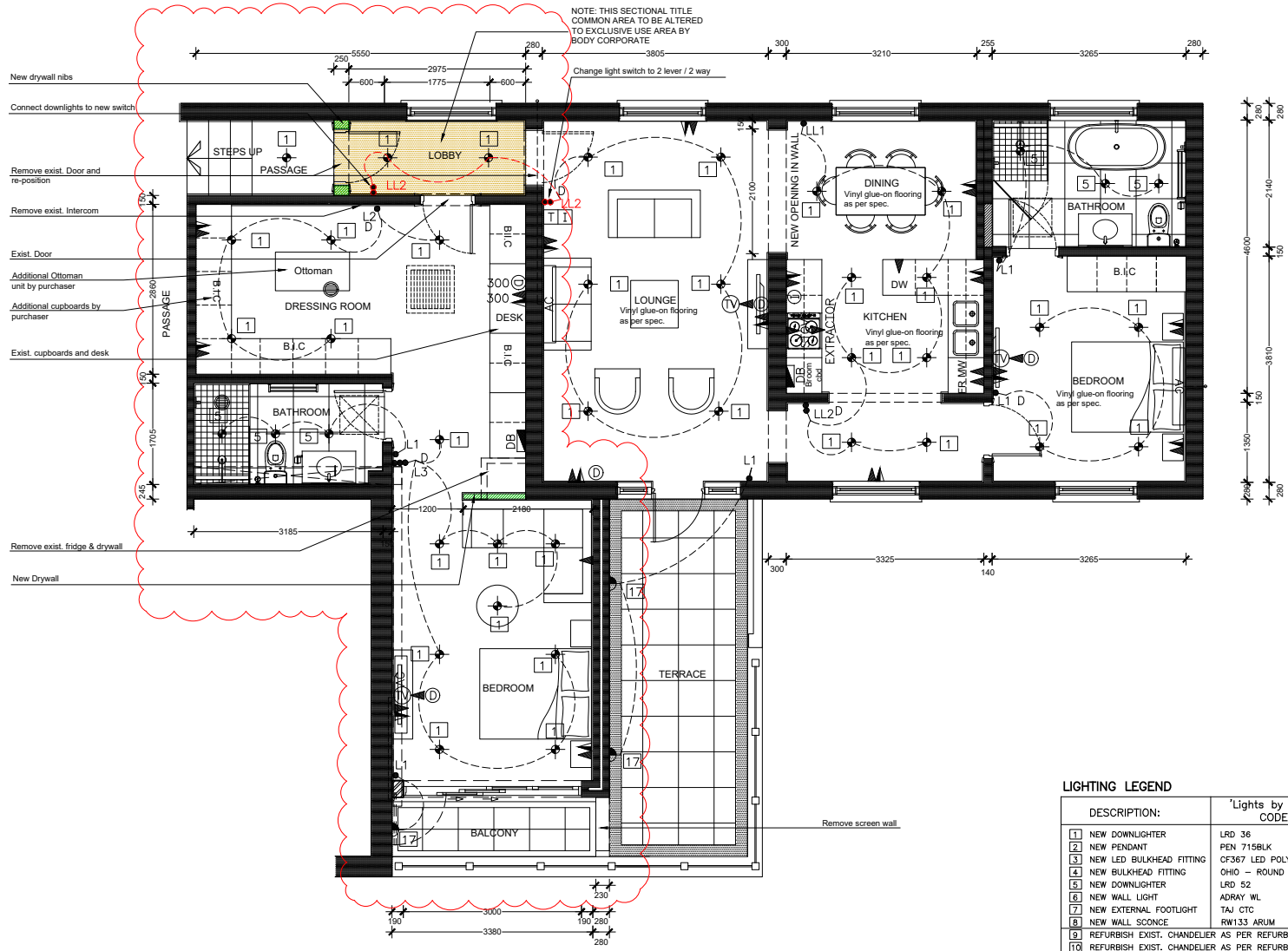
LIGHTING LEGEND

DESCRIPTION:	'Lights by Linea' CODE:
1] NEW DOWNLIGHTER	LRD 36
2] NEW PENDANT	PEN 715BLK
3] NEW LED BULKHEAD FITTING	CF367 LED POLYCARBONATE
4] NEW BULKHEAD FITTING	OHIO - ROUND
5] NEW DOWNLIGHTER	LRD 52
6] NEW WALL LIGHT	ADRAY WL
7] NEW EXTERNAL FOOTLIGHT	TAJ CTC
8] NEW WALL SCONCE	RW133 ARUM
9] REFURBISH EXIST. CHANDELIER AS PER REFURB LIGHT SCHEDULE	
10] REFURBISH EXIST. CHANDELIER AS PER REFURB LIGHT SCHEDULE	
11] NEW PENDANT FITTING	WRGD025 DOME WOVEN PEN
12] REFURB EXIST. LIBRARY CHANDELIER AS PER REFURB LIGHT SCHEDULE	
13] REFURB EXIST. LIBRARY SCONCES AS PER REFURB LIGHT SCHEDULE	
14] REFURB EXIST. CHANDELIER (FITTING T.B.C) AS PER REFURB LIGHT SCHEDULE	
15] REFURB EXIST. CHANDELIER (FITTING T.B.C) AS PER REFURB LIGHT SCHEDULE	
16] REFURB EXIST. CHANDELIER (FITTING T.B.C) AS PER REFURB LIGHT SCHEDULE	
17] WHITE UP/DOWN EXTERIOR FITTING	METRO TWIN
18] REFURB EXIST. SCONCES FROM ROOMS AS PER REFURB LIGHT SCHEDULE	

ELECTRICAL LEGEND

MEASUREMENTS ARE FROM FFL TO UNDERSIDE OF FITTING

	NEW STANDARD PLUG (Height as Indicated)
	SINGLE PLUG (Height as Indicated)
	WATERPROOF PLUG POINT @ 300 AFFL
	STOVE CONNECTION @ 300 AFFL
	L1 1 LEVER LIGHT SWITCH @1100
	L2 2 LEVER LIGHT SWITCH @1100
	L3 3 LEVER LIGHT SWITCH @1100
	LL1 1 LEVER LIGHT SWITCH-2WAY @1100
	LL2 2 LEVER LIGHT SWITCH-2WAY @1100
	LL3 3 LEVER LIGHT SWITCH-2WAY @1100
	D 1 DIMMER SWITCH @1100
	RECESSED DOWN LIGHTER
	FLUSH MOUNTED CEILING LIGHT
	SUSPENDED CEILING LIGHT
	WALL LIGHT - as indicated
	WATERPROOF LIGHT
	FLUORESCENT LIGHT
	TELEVISION + DATA
	TELEPHONE / INTERCOM
	METER
	DISTRIBUTION BOARD
	I 1 ISOLATOR @ 1100 AFFL



COMBINED SECTION 13 & 14: (Arum Lilly & Margarita)
 FLOOR LAYOUT
 SCALE: 1:50

Note: Dimensions indicated on plan are taken to finished plastered walls

LIGHTING LEGEND

DESCRIPTION:	'Lights by Linea' CODE:
1 NEW DOWNLIGHTER	LRD 36
2 NEW PENDANT	PEN 715BLK
3 NEW LED BULKHEAD FITTING	CF367 LED POLYCARBONATE
4 NEW BULKHEAD FITTING	OHIO - ROUND
5 NEW DOWNLIGHTER	LRD 52
6 NEW WALL LIGHT	ADRAY WL
7 NEW EXTERNAL FOOTLIGHT	TAJ CTC
8 NEW WALL SCENCE	RW133 ARUM
9 REFURBISH EXIST. CHANDELIER AS PER REFURB LIGHT SCHEDULE	
10 REFURBISH EXIST. CHANDELIER AS PER REFURB LIGHT SCHEDULE	
11 NEW PENDANT FITTING	WRGD025 DOME WOVEN PEN
12 REFURB EXIST. LIBRARY CHANDELIER AS PER REFURB LIGHT SCHEDULE	
13 REFURB EXIST. LIBRARY SCENCES AS PER REFURB LIGHT SCHEDULE	
14 REFURB EXIST. CHANDELIER (FITTING T.B.C) AS PER REFURB LIGHT SCHEDULE	
15 REFURB EXIST. CHANDELIER (FITTING T.B.C) AS PER REFURB LIGHT SCHEDULE	
16 REFURB EXIST. CHANDELIER (FITTING T.B.C) AS PER REFURB LIGHT SCHEDULE	
17 WHITE UP/DOWN EXTERIOR FITTING	METRO TWIN
18 REFURB EXIST. SCENCES FROM ROOMS AS PER REFURB LIGHT SCHEDULE	

ELECTRICAL LEGEND

MEASUREMENTS ARE FROM FFL TO UNDERSIDE OF FITTING

	NEW STANDARD PLUG (Height as indicated)
	SINGLE PLUG (Height as indicated)
	WATERPROOF PLUG POINT @ 300 AFFL
	STOVE CONNECTION @ 300 AFFL
L1	1 LEVER LIGHT SWITCH @1100
L2	2 LEVER LIGHT SWITCH @1100
L3	3 LEVER LIGHT SWITCH @1100
LL1	1 LEVER LIGHT SWITCH-2WAY @1100
LL2	2 LEVER LIGHT SWITCH-2WAY @1100
LL3	3 LEVER LIGHT SWITCH-2WAY @1100
D	DIMMER SWITCH @1100
	RECESSED DOWN LIGHTER
	FLUSH MOUNTED CEILING LIGHT
	SUSPENDED CEILING LIGHT
	WALL LIGHT - as indicated
	WATERPROOF LIGHT
	FLUORESCENT LIGHT
	TELEVISION + DATA
	TELEPHONE / INTERCOM
	METER
	DISTRIBUTION BOARD
	ISOLATOR @ 1100 AFFL