

**NOW
SELLING!**

TOCARA

L I F E S T Y L E E S T A T E

C H A R T W E L L



**EXPERIENCE THE BEST OF
BOTH CITY & COUNTRYSIDE LIVING!**

A FEATURE-PACKED ESTATE IN CHARTWELL!

PRICED FROM

R 949 000

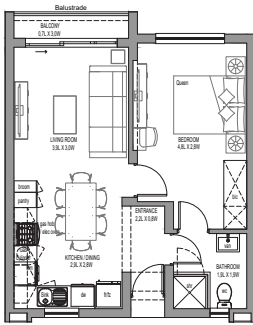
INCLUDES TRANSFER, BOND AND VAT COSTS. TS & CS APPLY

 Birchwood Avenue

MODERN 1, 2 & 3 BEDROOM APARTMENT DESIGNS

PRICED FROM

R 949 000

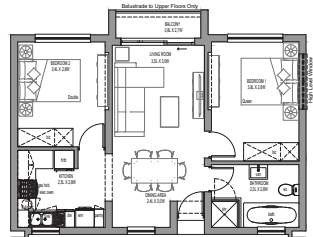


50m²

B2(B) - 1 BED 1 BATH

PRICED FROM

R 1 249 000

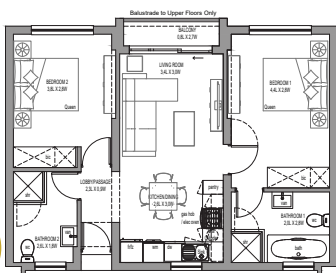


65m²

C5 - 2 BED 1 BATH

PRICED FROM

R 1 299 000

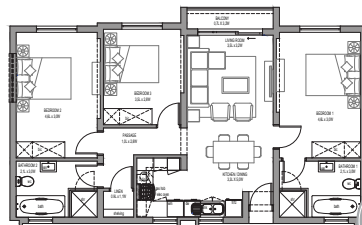


68m²

D6 - 2 BED 2 BATH

PRICED FROM

R 1 989 000



99m²

E1 - 3 BED 2 BATH

PACKED WITH AMENITIES TO COMPLIMENT YOUR LIFESTYLE

APARTMENT FEATURES



Fibre-Enabled



Three Kitchen Appliances Included



Fully Functional Inverter



Gas Hob

ESTATE FEATURES



Private Indoor Gym



Co-Working Spaces



24-Hour Access-Controlled Security



Bicycle Track



Clubhouse With Pool



Dog Park



Indigenous Gardens



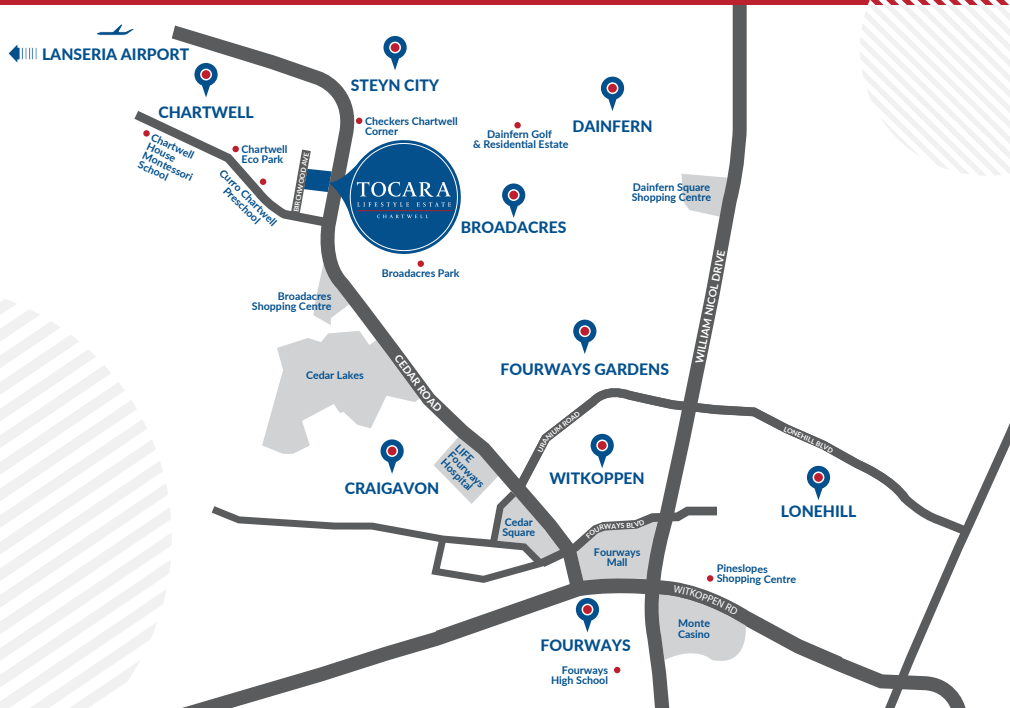
Padel Court

ARTIST IMPRESSION



TOCARA LIFESTYLE ESTATE

Tocara is beautifully located neighbouring Dainfern Estate, Steyn City, and Broadacres. Providing quick access to a number of shopping centres, Fourways Life Hospital, and a variety of private schools.



Interested? Contact one of our experienced sales consultants below

Bruce McCue
082 602 3006
brucem@summercon.co.za

Martin Ngwenya
082 600 3004
martinn@summercon.co.za

Royce Odendaal
082 601 3007
royceo@summercon.co.za



summercon
PROPERTY DEVELOPMENT
www.summercon.co.za

Scan with your phone to
explore Tocara online.

