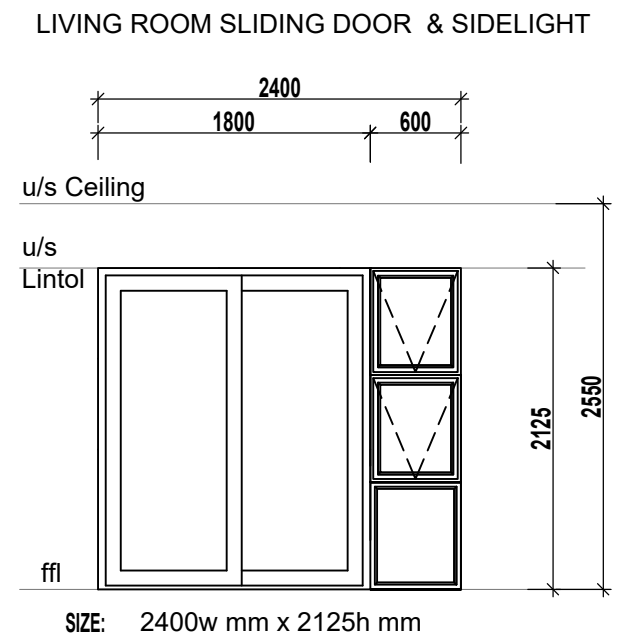
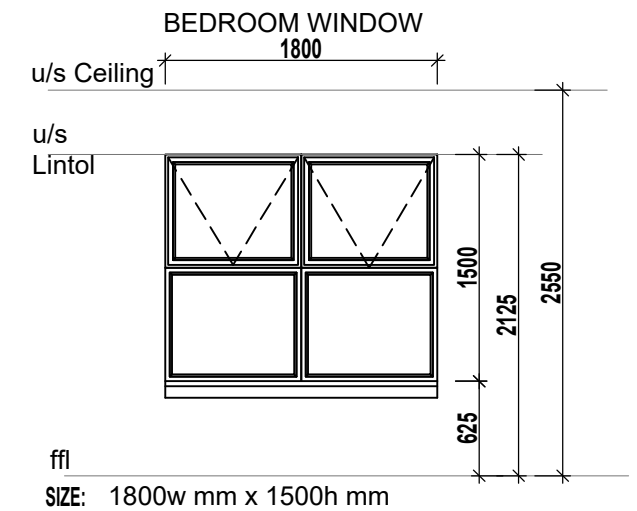
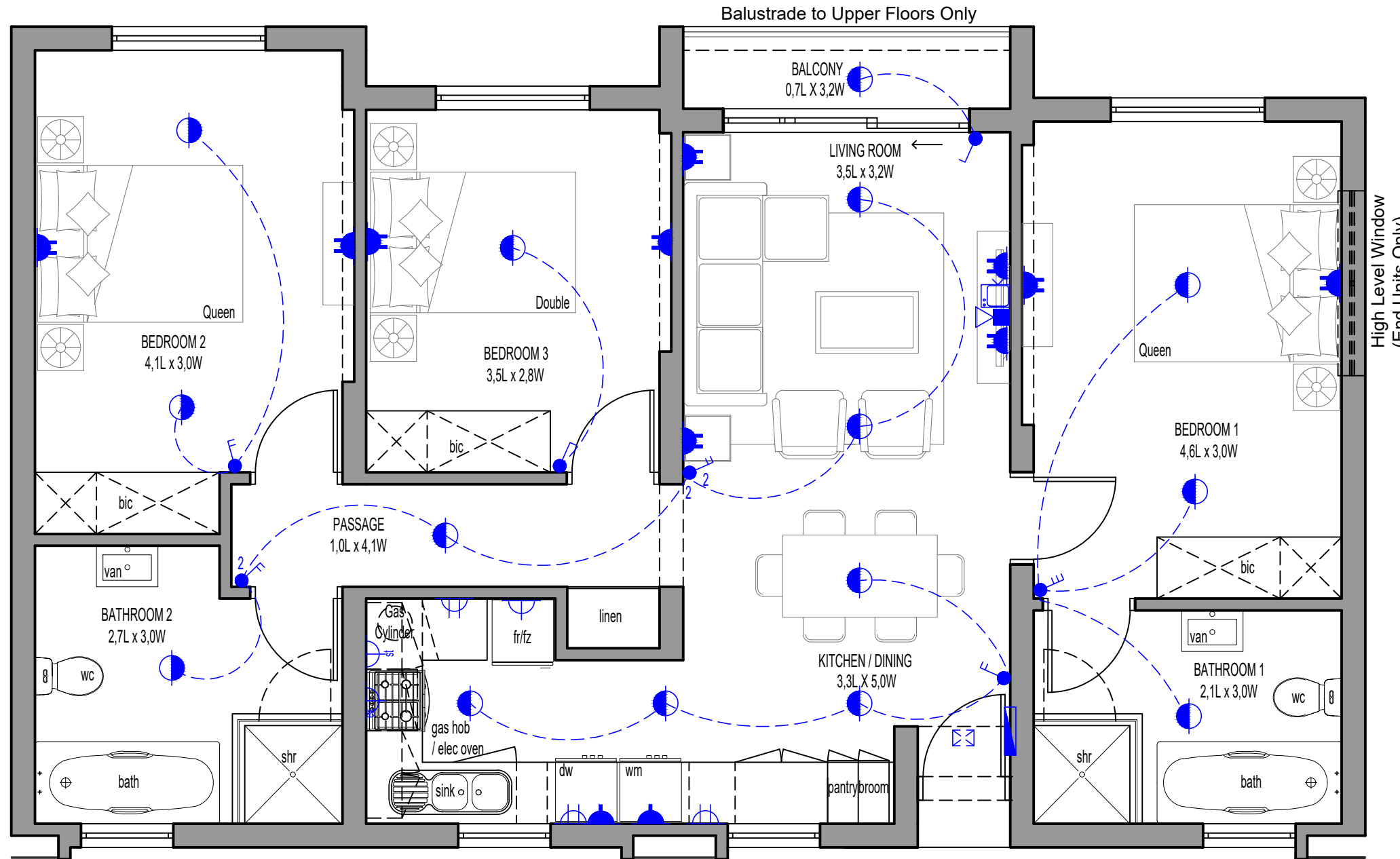


ANNEXURE C FLOOR PLAN



3 Bedroom - 2 Bathroom

SCALE 1:50

E2

ELECTRICAL LEGEND

- Surface Mounted LED Fitting
- External Wall Mounted LED Light Fitting
- Single Light Switch
- Double Light Switch
- Triple Light Switch
- Two-Way Light Switch
- Single Plug Point (300mm Above FFL)
- Double Plug Point (300mm Above FFL)
- Single Plug Point (150mm Above Counter)
- Double Plug Point (150mm Above Counter)
- Stove Isolator (Above Counter)
- Extractor Plug (High Level)
- Distribution Board
- TV Point
- Fibre / Data Point
- Inverter (Above Entrance Door)

AREA

TYPE E2	
Floor Area	98.47 m ²
Balcony	2.84 m ²
TOTAL	101.31 m²

* The areas are approximate and shall vary from the areas reflected on the sectional title plan