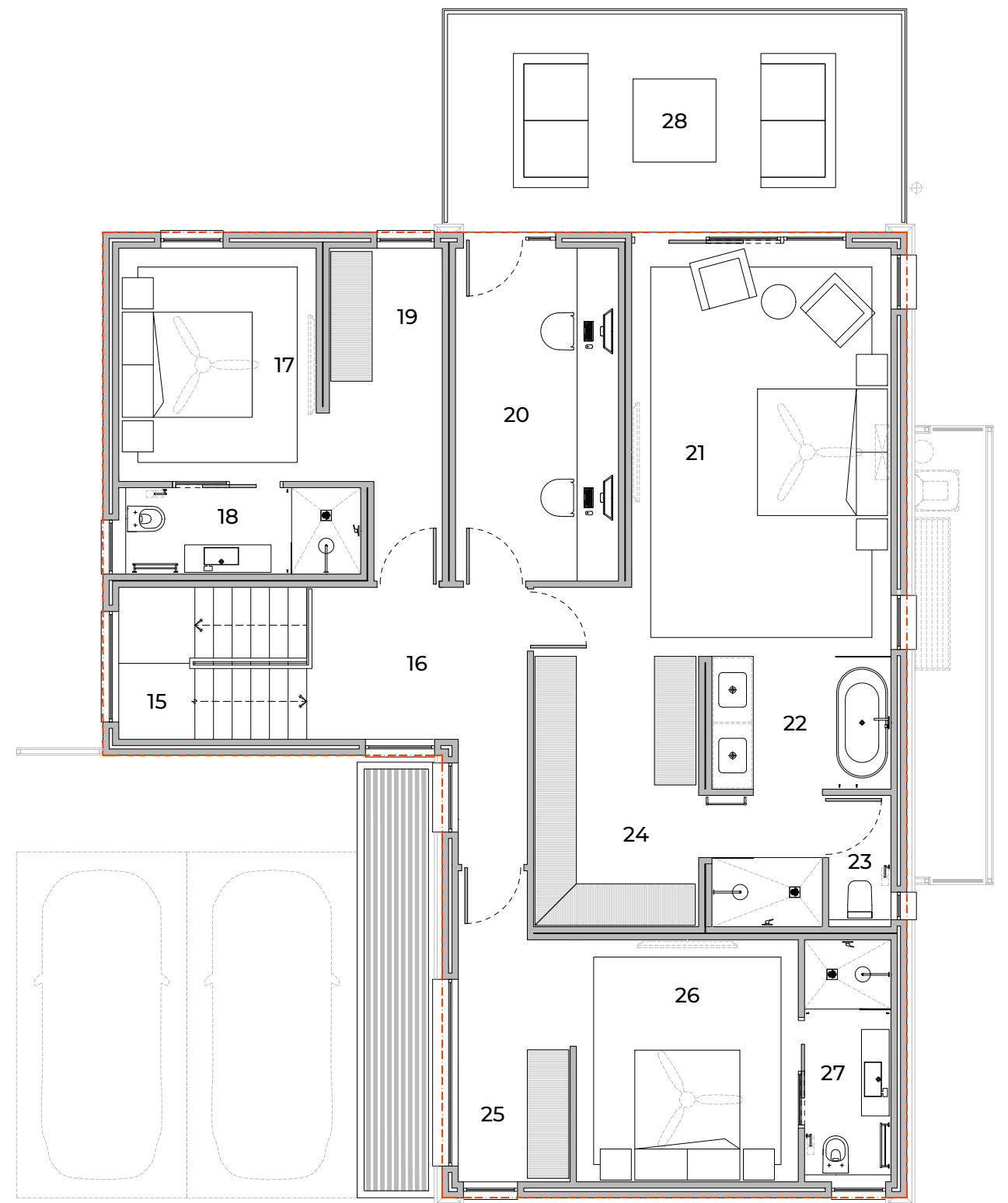


01 Entrance	03.86 m ²
02 WC	02.57 m ²
03 Store	03.58 m ²
04 Staircase	02.38 m ²
05 Living	25.48 m ²
06 Dining	23.36 m ²
07 Kitchen	12.71 m ²
08 Scullery	09.21 m ²
09 Garage	47.84 m ²
10 Patio	21.71 m ²
11 Yard	08.29 m ²
12 Walkway	08.68 m ²
13 Parking	12.50 m ²
14 Parking	12.50 m ²
15 Staircase	07.45 m ²
16 Passage	10.12 m ²
17 Bedroom 03	11.61 m ²
18 En-suite 03	05.32 m ²
19 Walk-in 03	08.36 m ²
20 Study	12.98 m ²
21 Bedroom 01	26.44 m ²
22 En-suite 01	09.28 m ²
23 WC	02.40 m ²
24 Walk-in 01	10.13 m ²
25 Walk-in 02	08.46 m ²
26 Bedroom 02	12.62 m ²
27 En-suite 02	05.83 m ²
28 Balcony	21.71 m ²



TYPE

D

GROUND FLOOR LAYOUT PLAN

Floor Area (Garage, House & Patio) 152.71m²
 Floor Area (External) 41.97m²

External Areas include: yard, guest parking, external staircase and walkways where applicable

Total measured floor area: 305.41m²

FIRST FLOOR LAYOUT PLAN

Floor Area (House & Balcony) 152.71m²

