

# VILLA TYPE C

## FRONT ELEVATION

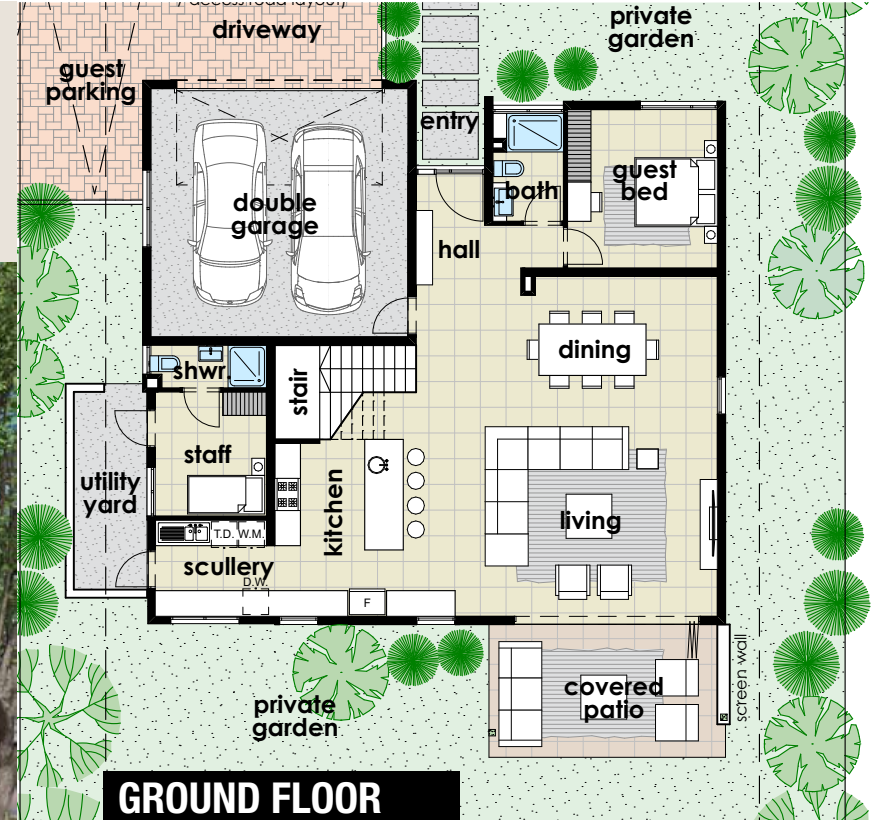


### AREA SCHEDULE :

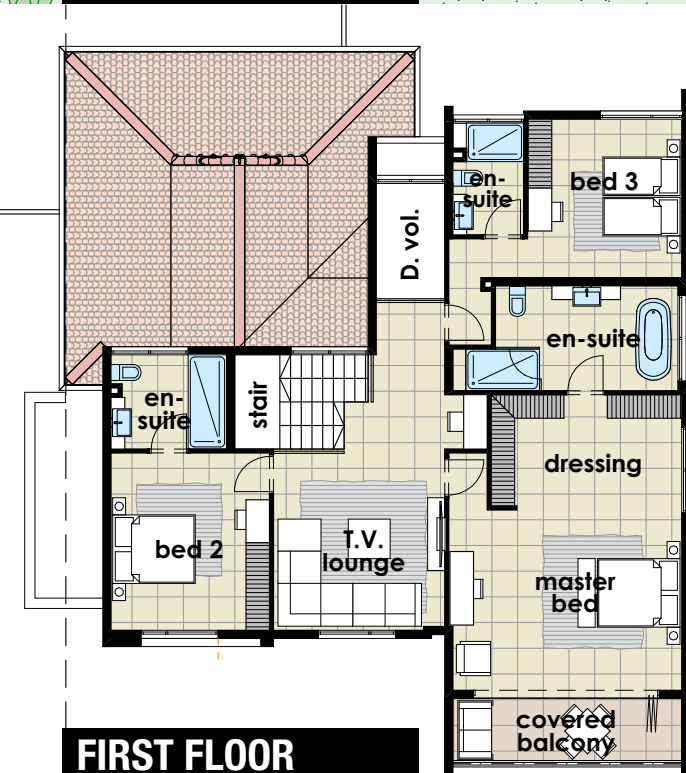
Villa Lower Level	129m <sup>2</sup>
Covered Terrace	17m <sup>2</sup>
Double Garage	39m <sup>2</sup>
Villa Upper Level	131m <sup>2</sup>
Covered Terrace	9m <sup>2</sup>
<b>Total</b>	<b>325m<sup>2</sup></b>

### VILLA FEATURES :

- 4 Bedrooms (3 x En-Suite)
- Guest Bathroom
- Open-Plan Living Area
- Kitchen & Scullery
- Pajama Lounge
- Covered Balcony & Patio
- Double Garage & Guest Parking
- Staff Accommodation
- Utility Yard



### GROUND FLOOR



### FIRST FLOOR