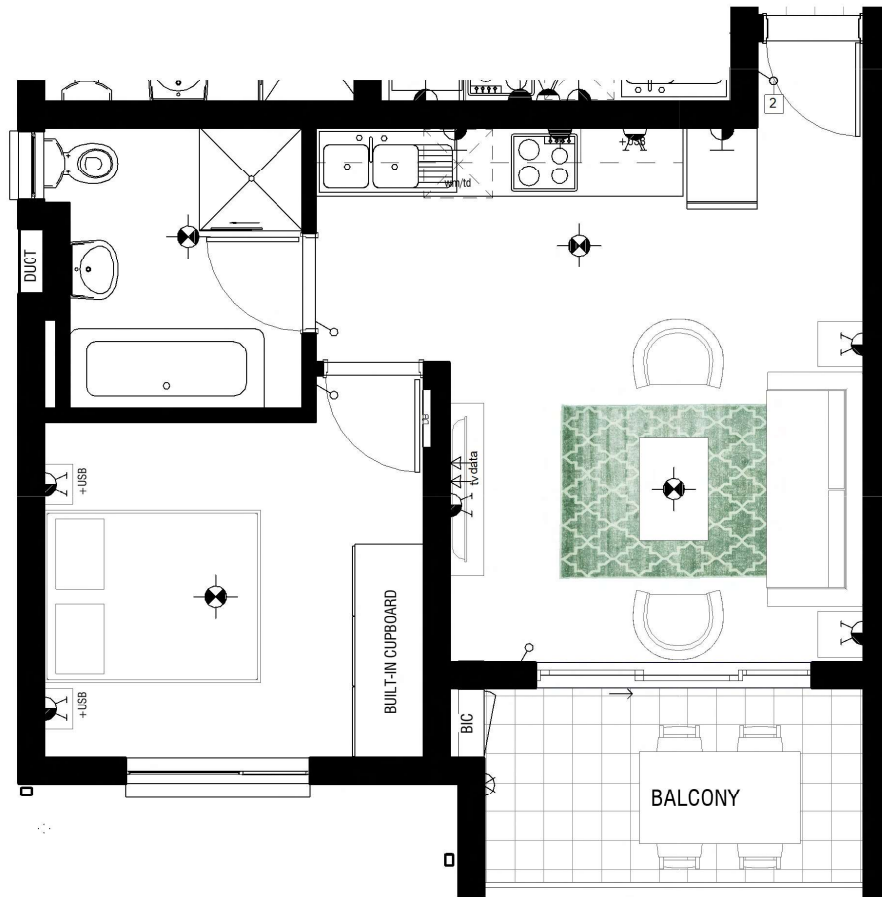


# APARTMENT FLOOR PLAN



## TYPE A4 - Second and Third Floor

### 1 Bedroom 1 Bathroom

|                        |                           |
|------------------------|---------------------------|
| Apartment Area Covered | 40.76m <sup>2</sup>       |
| Patio / Balcony        | 6.38m <sup>2</sup>        |
| <b>TOTAL AREA</b>      | <b>47.15m<sup>2</sup></b> |