



WELCOME

Welcome to **BAYWEST VILLAGE ON WALKER**

A gorgeous new residential development located in the new iconic suburb of Baywest North.

With its beautifully designed homes and its ideal location close to all the amenities and entertainment any family could need.

This new residential development boasts 325 modern, contemporary homes all set within an idyllic village like feel, perfect for your life-time of picture perfect memories.

We believe choice is everything and that's why we have designed a range of beautiful living options, from 1, 2 and 3 bedroom apartments to 2, 3 and 4 bedroom free-standing homes.

There really is something you and the family will love.















Artist impression of the completed Baywest Village on Walker. Indicative Only.

That was quick. HOW DID YOU GET HERE SO FAST?

With its favourable location, Baywest Village on Walker is located on the corner of Walker and Anathi Drive. With the N2 Highway and Cape Road so easily accessible, getting anywhere couldn't be simpler (or quicker) .

MAP LEGEND

- | | | | |
|-----------|---|---|---------------------------|
| 1 | Baywest Mall |  | Retail and Convenience |
| 2 | Fat Tracks Cycle and Walking trails |  | Restaurants |
| 3 | Walker Drive Shopping centre |  | Fast Food Eateries |
| 4 | Makro |  | Pharmacies |
| 5 | Sunridge Shopping centre |  | Vet and Pets |
| 6 | Metlife Plaza |  | Petrol / Service Stations |
| 7 | Curro Westbrook Primary and High School |  | Education / Schools |
| 8 | Sunridge Primary School |  | Hardware Store |
| 9 | Lorraine Primary School |  | Garden Centre |
| 10 | Norm-Hudlin Cycle and Walking trails |  | Gym / Fitness Centres |
| | |  | Cycle trails |
| | |  | Walking trails |



SITE DEVELOPMENT PLAN

| DEVELOPMENT SCHEDULE | | |
|----------------------|---|------------------|
| TYPE | | QUANTITY |
| PHASE 1 | █ | 25 UNITS |
| PHASE 2A | █ | 16 UNITS |
| PHASE 2B | █ | 24 UNITS |
| APARTMENTS | █ | 170 UNITS |
| SIMPLEX AND DUPLEX | █ | 26 UNITS |
| FREE STANDING | █ | 129 UNITS |
| | | 325 UNITS |



SITE PLAN

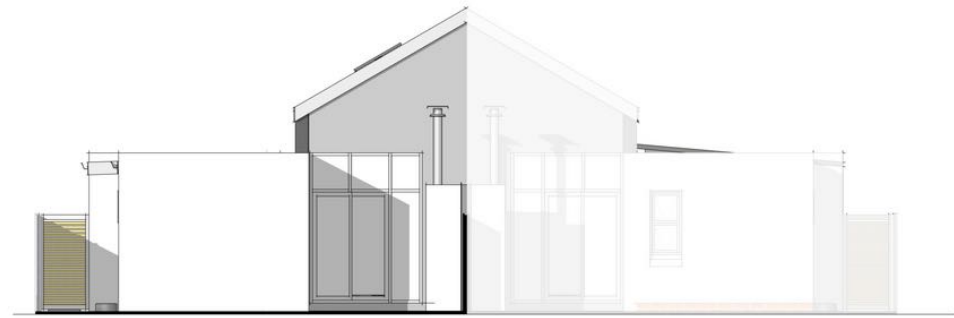
SIMPLEX UNIT - TYPE B



GROUND FLOOR PLAN

1 : 100

| | |
|----------------|------------------------|
| GROUND STOREY: | 62m ² |
| SINGLE GARAGE: | 24m ² |
| TOTAL: | 86m² |



BACK ELEVATION

1 : 100



FRONT ELEVATION

1 : 100



3D View 1

It's not **JUST ABOUT BRICKS AND MORTAR**

It's about building on the local neighbourhoods sense of pride and expanding the area to help grow the city.

Baywest Village on Walker will be part of the exciting expansion of the Baywest area in the western suburbs of Gqeberha. This exciting evolution of this pocket will offer a village-like feel whilst still paying attention to detail with beautiful modern fixtures and fittings.

Backup water tanks will be fitted to all the free-standing and single residential units and all homes will have solar powered PV geysers and be fibre internet ready.

This is only just the beginning and residents can be part of it from the very start.

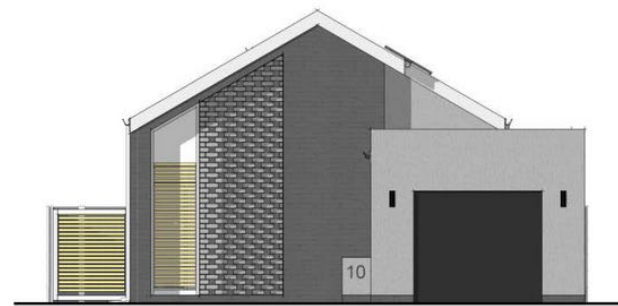


FREE STANDING UNIT- TYPE A



GROUND FLOOR PLAN

| | |
|----------------|-------------------------|
| GROUND STOREY: | 76m ² |
| SINGLE GARAGE: | 26m ² |
| TOTAL: | 102m² |



FRONT ELEVATION



BACK ELEVATION



PERSPECTIVE VIEW

FREE STANDING UNIT - TYPE B



GROUND FLOOR PLAN

| | |
|----------------|-------------------------|
| GROUND STOREY: | 78m ² |
| DOUBLE GARAGE: | 40m ² |
| TOTAL: | 118m² |



FRONT ELEVATION



BACK ELEVATION



PERSPECTIVE VIEW

FROM R1,514,900

Baywest Village
on walker

FREE STANDING UNIT- TYPE C



GROUND FLOOR PLAN

| | |
|----------------|-------------------------|
| GROUND STOREY: | 77m ² |
| SINGLE GARAGE: | 26m ² |
| TOTAL: | 103m² |



BACK ELEVATION



FRONT ELEVATION



PERSPECTIVE VIEW

Baywest Village
on walker

FROM R1,474,900



Interior of Type C unit



Interior of Type C unit



Built in braai area



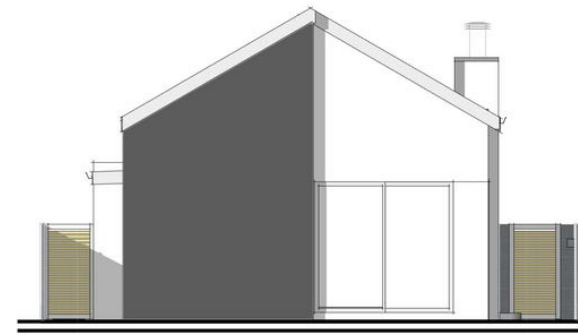
Bathroom of Type C

FREE STANDING UNIT - TYPE D



GROUND FLOOR PLAN

| | |
|-----------------|------------------------|
| GROUND STOREY: | 68m ² |
| SINGLE GARAGE : | 24m ² |
| TOTAL: | 92m² |



BACK ELEVATION



FRONT ELEVATION



PERSPECTIVE

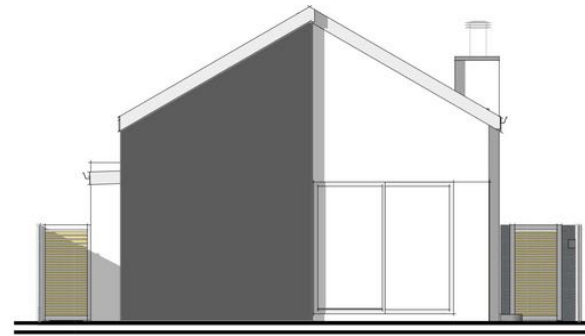
FROM R1,369,900

Baywest Village
on walker



GROUND FLOOR PLAN

| | |
|-----------------|-------------------------|
| GROUND STOREY: | 82m ² |
| SINGLE GARAGE : | 24m ² |
| TOTAL: | 106m² |



BACK ELEVATION



FRONT ELEVATION



PERSPECTIVE



Interior duplex lounge and kitchen



31

32

Street view of the Duplex units.

FREE STANDING UNIT - TYPE E



| | |
|----------------|-------------------------|
| GROUND STOREY: | 47m ² |
| FIRST STOREY: | 52m ² |
| SINGLE GARAGE: | 24m ² |
| TOTAL: | 123m² |



FRONT ELEVATION



BACK ELEVATION



PERSPECTIVE VIEW

FROM R1,559,900

Baywest Village
on walker



Interior of duplex kitchen.



Interior of duplex bedroom.



Interior of duplex bathroom.



Interior of duplex kitchen.



FREE STANDING UNIT - TYPE F



GROUND FLOOR PLAN



FIRST FLOOR PLAN

| | |
|----------------|-------------------------|
| GROUND STOREY: | 43m ² |
| SINGLE GARAGE: | 24m ² |
| COVERED PATIO: | 16m ² |
| FIRST STOREY: | 65m ² |
| TOTAL: | 148m² |



FRONT ELEVATION



BACK ELEVATION



PERSPECTIVE VIEW

FROM R1,819,900

Baywest Village
on walker



A LIFESTYLE THAT SURROUNDS YOU

You really are spoilt for choice with popular retail outlets, fabulous restaurants and great entertainment for the whole family all on your doorstep.

A quick walk around the block and you're surrounded by nature. Lace up your running shoes or get those wheels turning on the Fattracks Baywest mountain bike trails or even find a spot in our public open spaces to sit back, relax and enjoy some fresh air in a safe and secure environment.



650m

Walk to
Baywest Mall



18km

of biking and
walking trails in our
proximity



3600m²

of public open
spaces





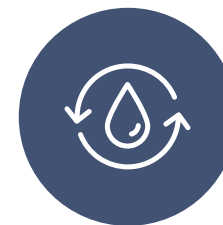
Street view of the free-standing units.
Indicative Only.

Where a house.

BECOMES YOUR HOME.

Tailor your home to match your taste and style with a choice of alterations and changes.

We believe you should feel right at home when you first walk through the door so our in-house design team have carefully selected a choice of beautiful modern fixtures, finishes and colours that you can choose from. And don't worry, they will be there to guide you along the way.



**BACK UP WATER
TANK**
to all free-standing
and single
residential homes



SOLAR PV GEYSERS
fitted to all
apartments and
homes



SECURE HOME
environment for all
apartments and
homes.



Interior of simplex unit kitchen.



Interior of free-standing Type B1

Baywest Village
on walker

Visit our Sales Office

BAYWEST VILLAGE ON WALKER
CNR WALKER & ANATHI DRIVE, BAYWEST NORTH.

SALES: 041 450 9494
WHATSAPP: 082 470 9002
EMAIL: SALES@BAYWESTPROP.CO.ZA
WEBSITE: WWW.BAYWESTPROP.CO.ZA

PROUDLY DEVELOPED BY

BAYWEST
PROPERTY DEVELOPMENT

ANATHI
PROPERTY DEVELOPMENTS