



AFRICAN
PROPERTY
AWARDS

LAUFEN

AWARD
WINNER

2023-2024

Balwin
PROPERTIES®



LOCATION

Greencreek is a unique development in the Riverwalk Estate. Situated in the rapidly expanding suburbs East of Pretoria. This amazing development is the link bridge between Mamelodi and Silverlakes

Allowing you to enjoy almost every leisure available in the development and surrounding area which is close to Woodhill Country Estate, Silverlakes Golf Estate, Trail & Mountain Bike Parks and so much more.

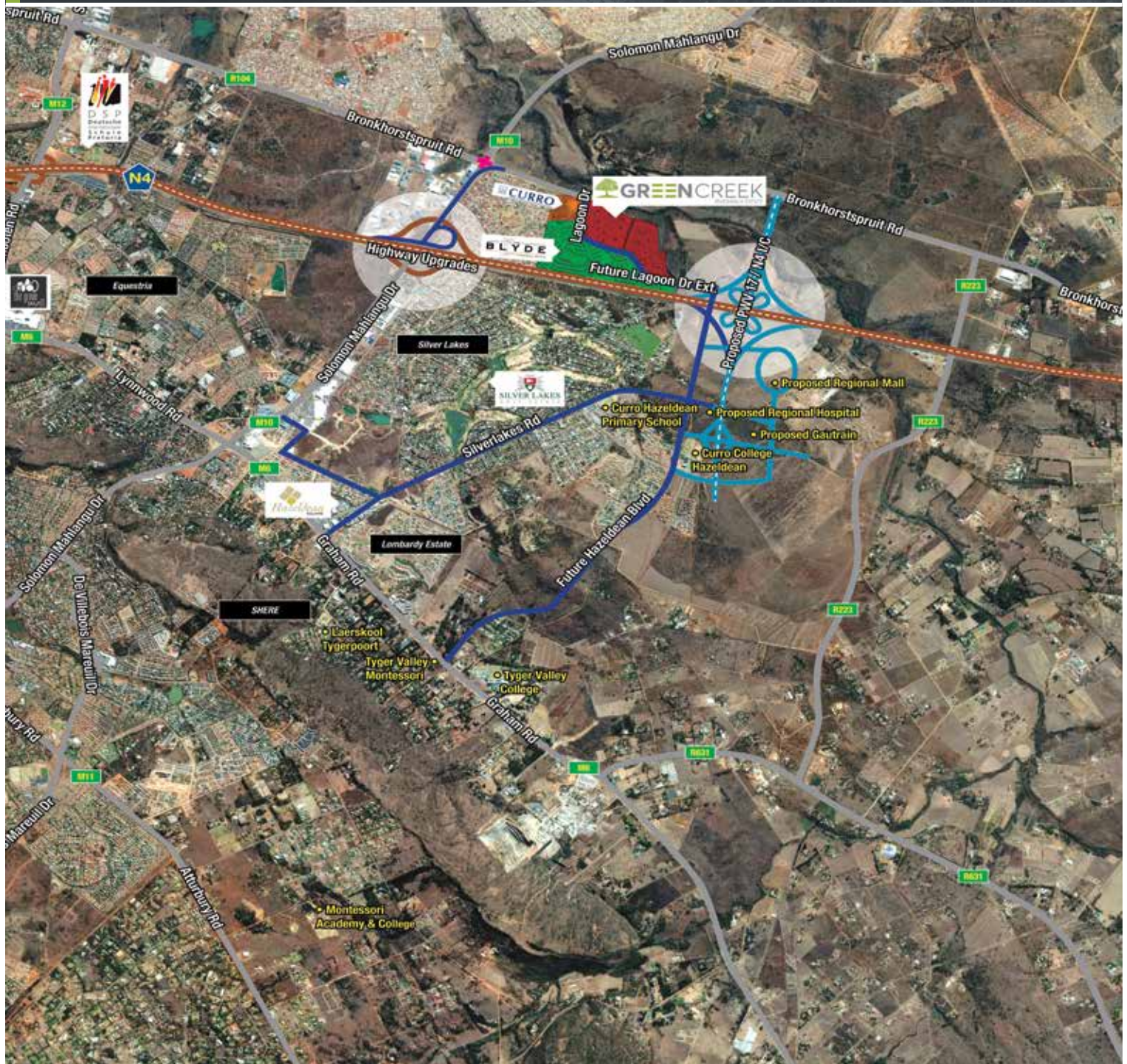
With its prime location, Greencreek is situated perfectly with easy access to the N4, top education facilities and schools minutes away; Curro Hazeldean Primary School, Curro College, Curro Academy, University of Pretoria, various Preschools, Primary and High Schools.

For entertainment outside the development you don't need to look far, top restaurants and fast-food outlets are conveniently close by.

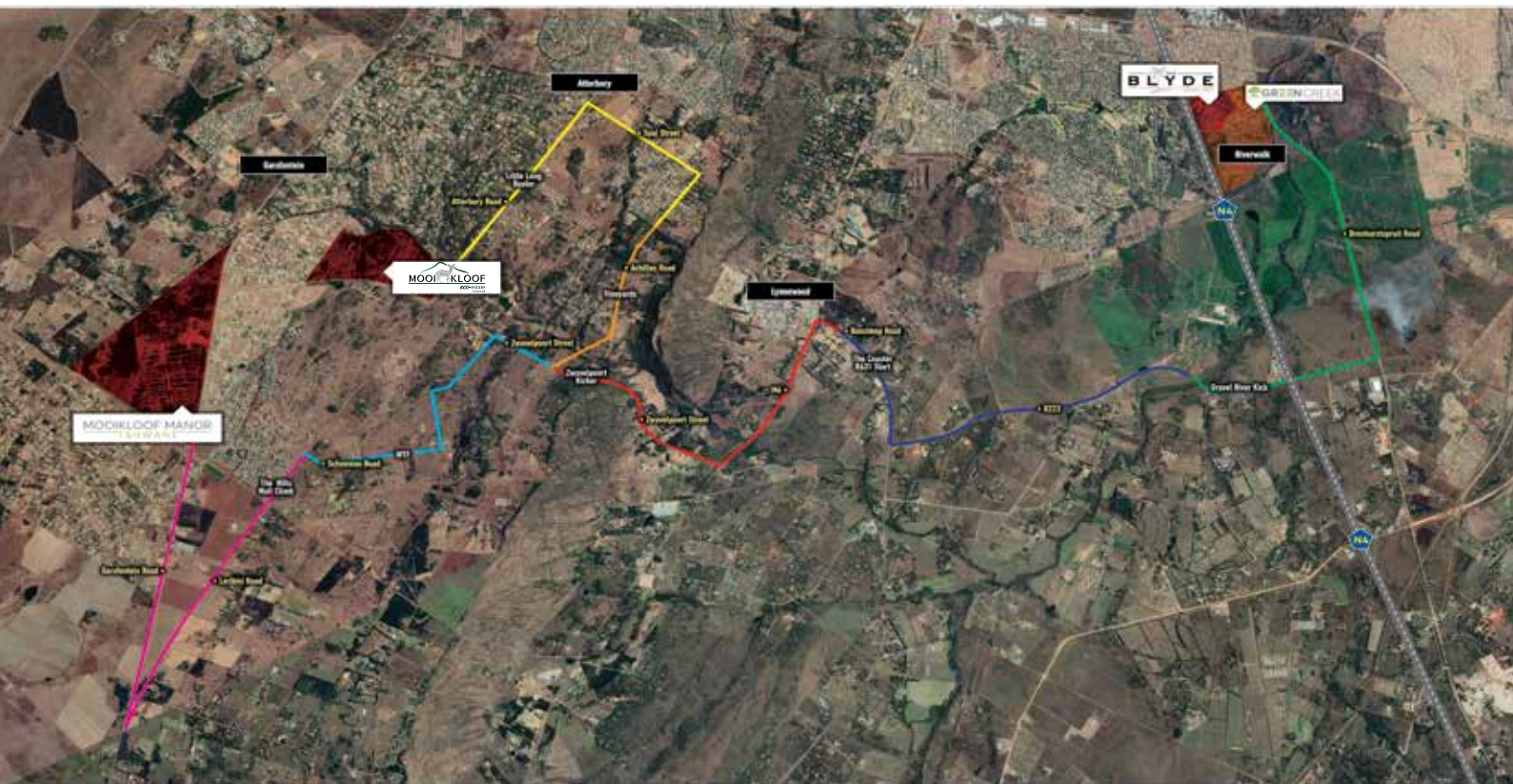
Also minutes away from shopping centres with supermarkets and popular retail stores.



LOCATION MAP



CYCLE MAP



- The Hills Wall Climb Cycling Route - 7km**
- WTF Cycling Route - 4.2km**
- Little Lung Buster Cycling Route - 5.3km**
- Vineyards Cycling Route - 2.5km**

- Zwavelpoort Kicker Cycling Route - 4.5km**
- The Coaster R631 Start Cycling Route - 6km**
- Gravel River Kick Cycling Route - 6km**
- N4 Highway**

THE GATE HOUSE

With state-of-the-art developments it has to have state-of-the-art security. Greencreek has two secure main entrances with automated boom systems and 24-hour security. The boundary walls have electric fencing.



DEVELOPMENT



The exclusive development offers studios, 1 bedroom, 2 bedroom and 3 bedroom apartments with private gardens for the ground floor apartments and private balconies for first, second and third floor apartments.

Each apartment comes with 2 parking bays for the 2 and 3 bedroom apartments and 1 parking bay for the 1 bedroom apartments and studios. There is visitors parking throughout the development as well as by the Lifestyle Centre. There is also an eco-friendly car wash facility.



DEVELOPMENT



DEVELOPMENT



LIFESTYLE CENTRE

From the farm, to your table. We promote seasonal eating which benefits your health and supports environmental sustainability.

Go Green with Balwin. Balwin's GreenBarn is an eco-friendly oasis offering environmental friendly produce and products to residents who wish to minimise their carbon footprint while saving on utility costs.

The GreenBarn offers the following features:

- 🌿 Green Café
- 🌿 Swimming Pool
- 🌿 Eco Adventure Area
- 🌿 Concierge Service
- 🌿 Energy Efficient Laundromat
- 🌿 Outdoor Gym
- 🌿 Indoor Gym
- 🌿 Meeting Room
- 🌿 Outdoor Chess
- 🌿 Multi-purpose Sports field
- 🌿 Children's Play Area



LIFESTYLE CENTRE



SHOW APARTMENT



SHOW APARTMENT





APARTMENT LAYOUTS

H

M

R

TYPE A2
FIRST, SECOND & THIRD FLOOR
1 Bedroom 1 Bathroom



Apartment Area	39.45m ²
Covered Patio / Balcony	4.41m ²
TOTAL AREA	43.85m²

APARTMENT LAYOUTS



TYPE A3 GROUND, FIRST, SECOND & THIRD FLOOR 2 Bedroom 2 Bathroom



Apartment Area	58.22m ²
Covered Patio / Balcony	6.04m ²
TOTAL AREA	64.26m²



TYPE A3 GROUND & FIRST FLOOR 3 Bedroom 2 Bathroom



Apartment Area	75.89m ²
Covered Patio / Balcony	6.47m ²
TOTAL AREA	82.36m²



APARTMENT LAYOUTS



TYPE A3 SECOND & THIRD FLOOR 1 Bedroom 1 Bathroom



Apartment Area	42.01m ²
Covered Patio / Balcony	6.43m ²
TOTAL AREA	48.43m²



TYPE A3 SECOND & THIRD FLOOR 1 Bedroom 1 Bathroom LIFESTYLE



Apartment Area	30.76m ²
TOTAL AREA	30.76m²

APARTMENT LAYOUTS

B

F

K

P

TYPE C1

GROUND, FIRST, SECOND & THIRD FLOOR

2 Bedroom 2 Bathroom



B

F

K

P

TYPE C1

GROUND, FIRST, SECOND & THIRD FLOOR

2 Bedroom 2 Bathroom



B

F

K

P

TYPE C1

GROUND, FIRST, SECOND & THIRD FLOOR

2 Bedroom 2 Bathroom



Apartment Area	62.41m ²
Covered Patio / Balcony	5.75m ²
TOTAL AREA	68.16m²

Apartment Area	62.41m ²
Covered Patio / Balcony	5.75m ²
TOTAL AREA	68.16m²

Apartment Area	62.41m ²
Covered Patio / Balcony	5.75m ²
TOTAL AREA	68.16m²

APARTMENT LAYOUTS

B

F

K

P

TYPE C1

GROUND, FIRST, SECOND & THIRD FLOOR

2 Bedroom 2 Bathroom



B

F

K

P

TYPE C1

GROUND, FIRST, SECOND & THIRD FLOOR

2 Bedroom 2 Bathroom



B

F

K

P

TYPE C1

GROUND, FIRST, SECOND & THIRD FLOOR

2 Bedroom 2 Bathroom



Apartment Area	62.41m ²
Covered Patio / Balcony	5.75m ²
TOTAL AREA	68.16m²

Apartment Area	62.41m ²
Covered Patio / Balcony	5.75m ²
TOTAL AREA	68.16m²

Apartment Area	62.41m ²
Covered Patio / Balcony	5.75m ²
TOTAL AREA	68.16m²

APARTMENT LAYOUTS

B

F

K

P

TYPE C1
GROUND, FIRST, SECOND & THIRD FLOOR
2 Bedroom 2 Bathroom



Apartment Area 62.41m²
Covered Patio / Balcony 5.75m²
TOTAL AREA 68.16m²

B

F

K

P

TYPE C1
GROUND, FIRST, SECOND & THIRD FLOOR
2 Bedroom 2 Bathroom



Apartment Area 62.41m²
Covered Patio / Balcony 5.75m²
TOTAL AREA 68.16m²

APARTMENT LAYOUTS

C G

**TYPE B3
GROUND FLOOR**

3 Bedroom 2 Bathroom



Apartment Area	75.87m ²
Covered Patio / Balcony	6.49m ²
TOTAL AREA	82.36m²

D H N T

**TYPE B3
GROUND, FIRST, SECOND & THIRD FLOOR**

2 Bedroom 2 Bathroom



Apartment Area	58.19m ²
Covered Patio / Balcony	6.14m ²
TOTAL AREA	64.32m²

APARTMENT LAYOUTS



L R

TYPE B3
SECOND & THIRD FLOOR

1 Bedroom 1 Bathroom LIFESTYLE



Apartment Area	30.76m ²
TOTAL AREA	30.76m²

M S

TYPE B3
SECOND & THIRD FLOOR

1 Bedroom 1 Bathroom



Apartment Area	42.01m ²
Covered Patio / Balcony	6.43m ²
TOTAL AREA	48.44m²



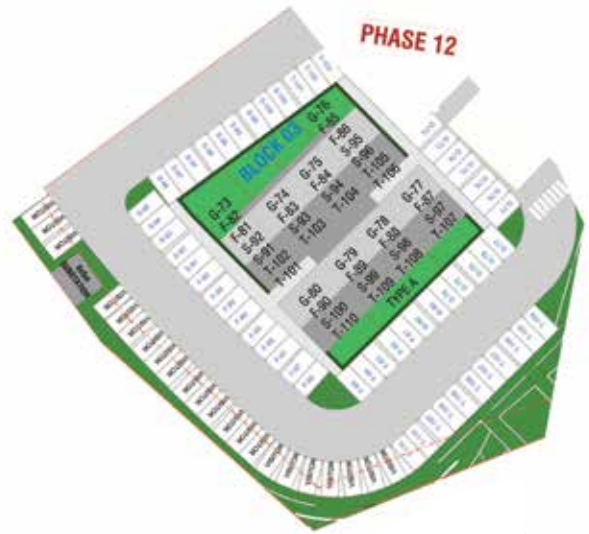
SITE DEVELOPMENT PLAN



PARKING LAYOUT PLAN - PHASES



PHASE 11

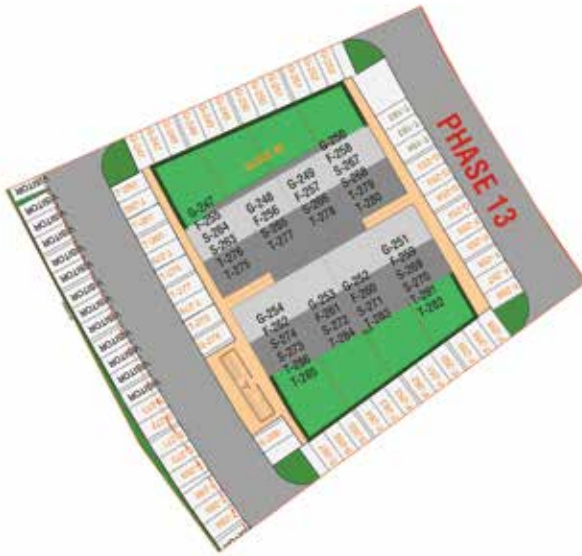


PHASE 12



PHASE 12B

PARKING LAYOUT PLAN - PHASES



PHASE 13



PHASE 14



PHASE 15



SPECIFICATIONS & FINISHES

INTERNAL WORKS

External Brickwork	- Sponge Plaster And Paint / Facebrick
Internal Brickwork	- One Coat Sponge Plaster and Paint
Roof Covering	- Roof Sheetting
Windowsills	- Concrete Sill, Internal Tiled
Floor Covering	- All Floors Tiled
Ceilings	- Painted Ceiling
Windows	- Aluminium
Cornices	- As per Show Apartment
Front Door	- Fire Door with Frame
Patio Door	- Aluminium Sliding Doors
Internal Doors	- Hollowcore Doors with Painted Frames
Locksets	- Sliding Doors with Dead Bolt - Internal 3 Lever Brushed Stainless Steel - Front Door Knob Cylinder
Wall Tiling	- As per Show Apartment
Kitchen Tops	- Quartz Stone
Sanitary Ware Kitchen	- Stainless Steel Sink - Pillar Type Sink Mixer - Washing Machine Stop Cock
Sanitary Ware Bathrooms	- White Free Standing Bath - Bath Mixer & Niki Spout - White Basin Vanity - Basin Mixer - White Toilet as per Show Apartment - Bathroom Fittings as per Show Apartment - Shower Rose and Arm - Shower Door as per Show Apartment - Shower Mixer
Skirting	- Skirtings per Show Apartment
Plumbing	- As per Municipal Requirements
Garden Taps	- One per Ground Floor Apartment in Garden
Sewers	- To Municipal Requirements
Internal Lighting	- As per Layout (Energy Efficient Lighting)
External Lighting	- As per Layout
Plug Points	- As per Layout

TV Point	- As per Layout (Lounge only)
Data (Point Only)	- One per Apartment As per Layout
Heating	- Hot Water System
Electricity	- Prepaid Meters
Painting	- As per Architect Specification
Lighting Fittings	- As per Show Apartment
Kitchen Appliances	- Undercounter Electric Oven, Hob & Extractor
Kitchen	- As per Layout
B.I.C.	- As per Layout
Gutters	- As per Layout
Tiling	- All Tiling to be as per the Show Unit. No Deviation would be allowed
Electrical	- As per Layout
Patio	- As per Layout

EXTERNAL WORKS

Boundary Walling	- As per Site Layout
Security	- Electric Fence / Access Control / CCTV Monitoring
Paving	- As per Plan
Landscaping	- As per Plan
Entrance System	- Biometric
Entrance	- Automated Boom System
Garden Walls and Unit Position	- To be Determined According to Site Conditions
Parking Bays	- As per layout
Refuse	- Eco-Friendly Waste Management System

CLAUSE

1. The developer reserves the right to substitute or replace any of the above with an equivalent or improved product should problems of availability arise, or for any other reason.
2. No private work or alterations will be tolerated.
3. Garden sizes and configuration may vary from plan to accommodate site conditions.
4. Parking allocation may vary from plan to accommodate site conditions.



Lifestyle Centre



Swimming Pool



Outdoor & Indoor Gym



Dog Friendly Park



Sports Field



Fibre & DSTV Ready



Children's Play Area



Laundromat



Solar Supplemented
Electricity



24 Hour Security



Prepaid Utilities



Outdoor Chess



Meeting Room

Austin Heywood

 071 864 1916  austinh@balwin.co.za

 Lagoon Drive, Pretoria East

 www.balwin.co.za



Latest Awards
44 International Property Awards



On Show | 2-6pm

Wed, Sat, Sun & All Public Holidays

