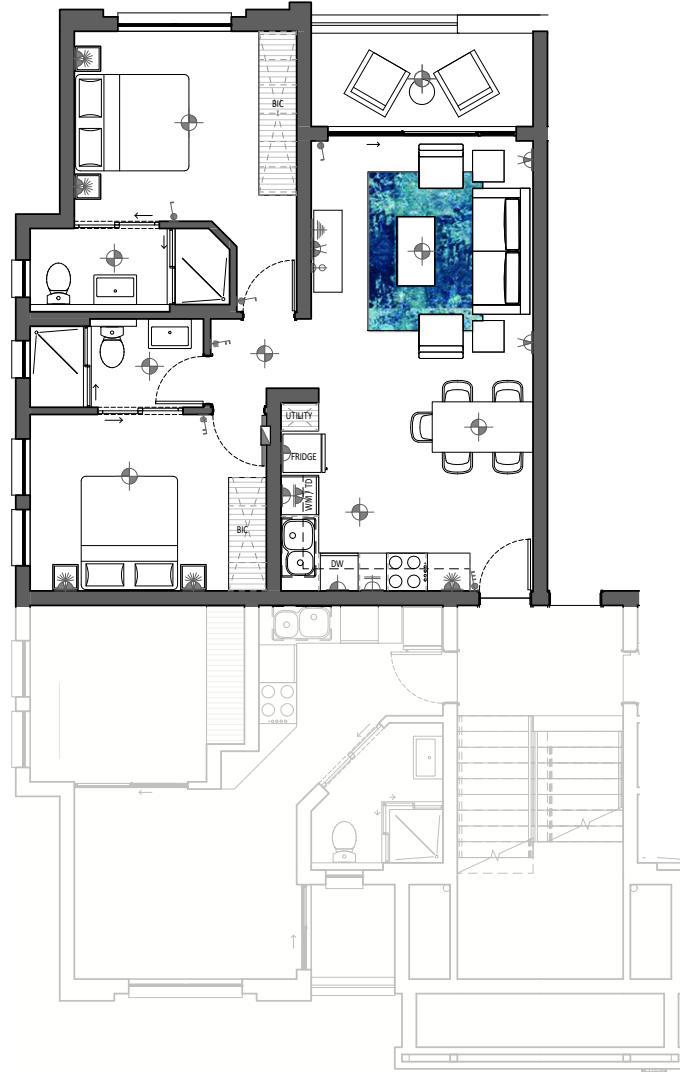


# APARTMENT FLOOR PLAN (PHASE 10)



FIRST FLOOR

Apartment Area	68.43m <sup>2</sup>
Covered Balcony	6.33m <sup>2</sup>
<b>Total Area</b>	<b>74.76m<sup>2</sup></b>

## 2 BEDROOM 2 BATHROOM APARTMENT C

*Balwin*  
PROPERTIES