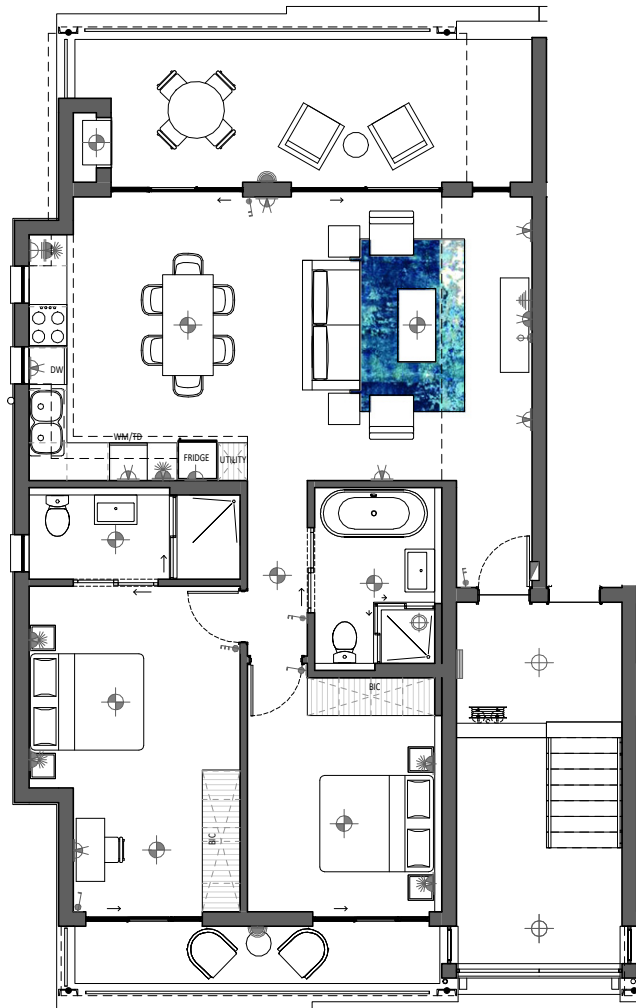


APARTMENT FLOOR PLAN (PHASE 07+)



THIRD FLOOR
PENTHOUSE

Apartment Area	83.54m ²
Covered Balcony 1	24.74m ²
Covered Balcony 2	7.35m ²
Total Area	115.63m²

2 BEDROOM 2 BATHROOM
APARTMENT G

Balwin
PROPERTIES