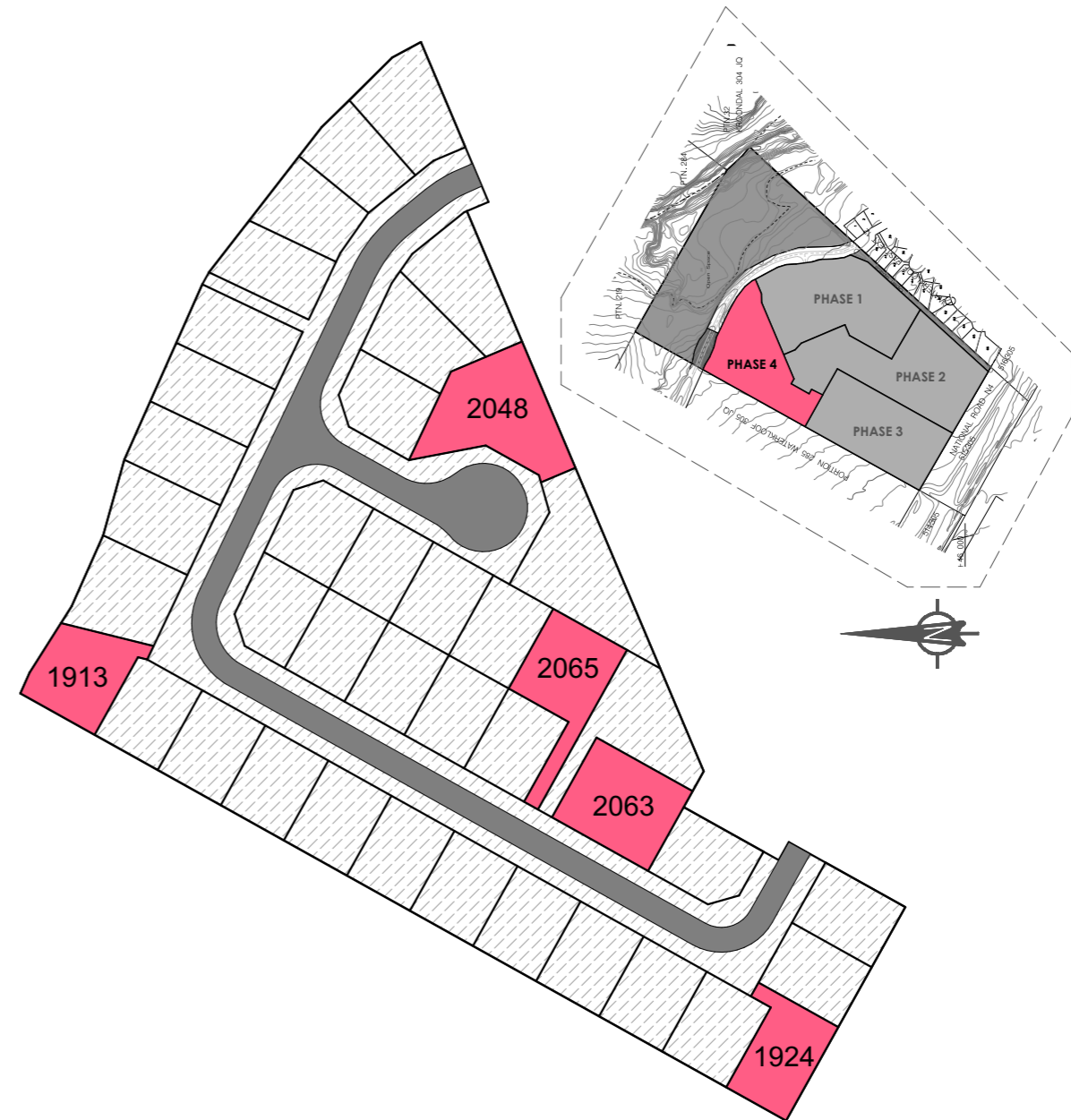


WATERKLOOF RESIDENTIAL ESTATE

New Phase 4 Development - 41 Erven



80/UNIT TYPE A

NOTE:
Drive-way and Carport position may differ,
depending on Unit location and orientation



MULTIGEE (PTY)LTD

Telephone: +27 (0) 14 537 8932
Email: info@ddandg.co.za

Reg. No. 2021/130509/07
Members: B.E. Gericke. | M.C. Gericke.
Registered Member Of: NHBRC



KLERCK ARCHITECTS (PTY)LTD
Menlynwoods Office Park | Block A | First Floor
291 Sprite Avenue | Faerie Glen
Pretoria | South Africa | 0081
PO Box 2242 | Zwavelpoort | 0036

Telephone: +27 (0) 12 807 2170
VAT Reg No. 411 016 8830
Company Number: 2015/304170/07

House - 80.30m²
Covered Porch - 2.90m²
Optional Patio - 9.0m²
Carport - 15.46m²

PROTECTED BY THE COPYRIGHT ACT NO. 98 OF 1978
KLERCK ARCHITECTS Sc. No 1997/050848/23
ALL 3D RENDERINGS ARE FOR ILLUSTRATED PURPOSES ONLY