

DOUBLE D&G BUILDING CONTRACTORS.
P.O. Box 356 | Broederström | 0240

Telephone: +27 (0) 14 537 8932/3
Fax: +27 (0) 86 670 6264
Email: marlize@ddandg.co.za

CK No. 1996/039668/23 | Member: B.E. Gercke.
Registered Member Of: NHBRC

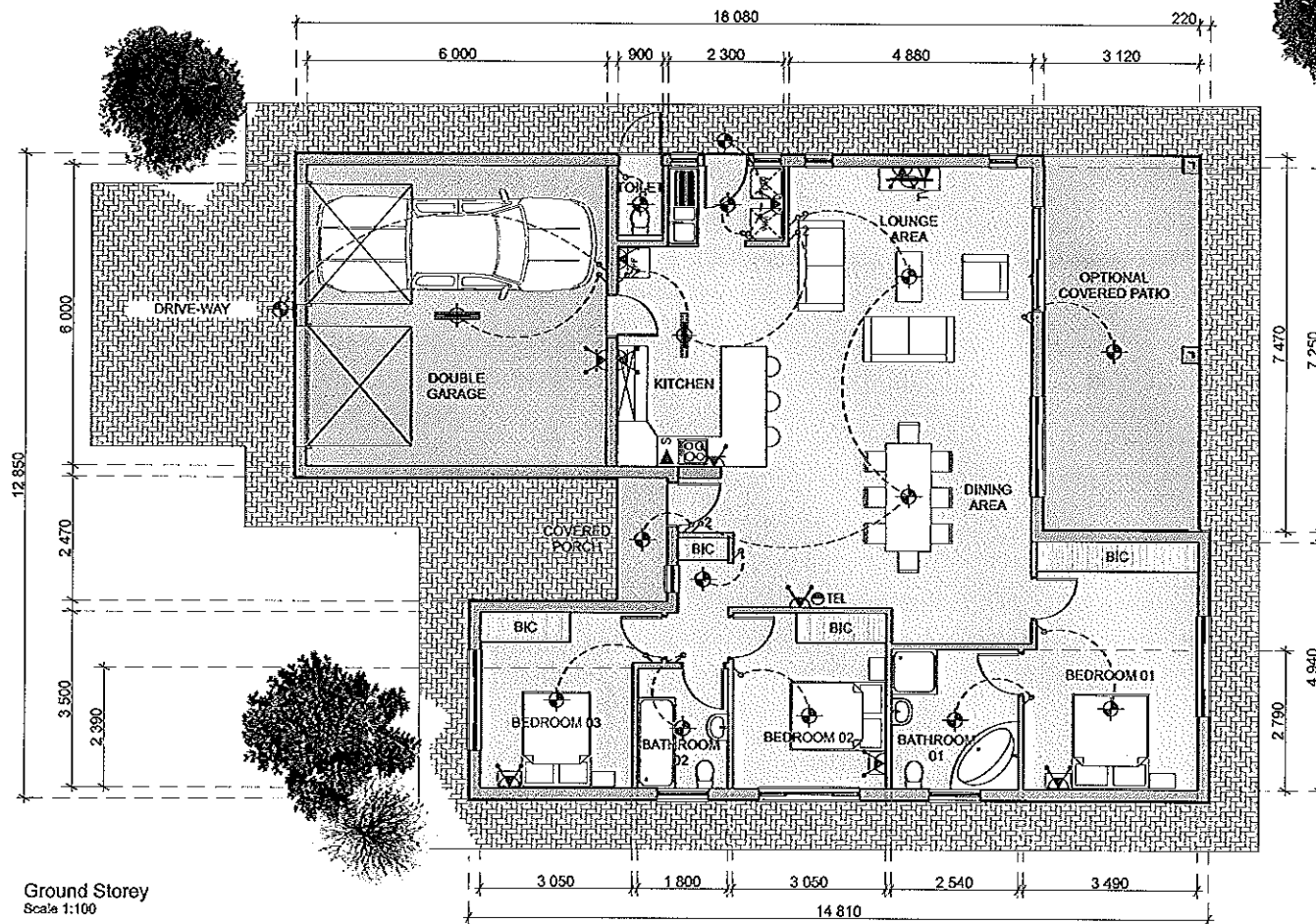


KLERCK ARCHITECTS (PTY) LTD
Arenif Office Park | Block B | Ground Floor
457 Witbeite Road | Die Wilgers
Pretoria | South Africa | 0040
PO Box 2242 | Zwaelpoort | 0036

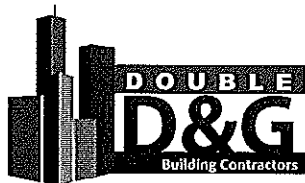
Telephone: +27 (0) 12 807 2170
VAT Reg No. 411 016 8830
Company Number: 2015/304170/07

UNIT TYPE 1
House - 180,52m²
Optional Patio - 23,30m²

PROTECTED BY THE COPYRIGHT ACT NO. 93 OF 1978
KLERCK ARCHITECTS No 1997/050848/23



Ground Storey
Scale 1:100



DOUBLE D&G BUILDING CONTRACTORS,
P.O. Box 356 | Broederström 1 0240

Telephone: +27 (0) 14 537 8932/3
Fax: +27 (0) 86 670 6264
Email: marlize@ddandg.co.za

CK No. 1996/039688/23 | Member: B.E. Gericke,
Registered Member Of: NHBRC



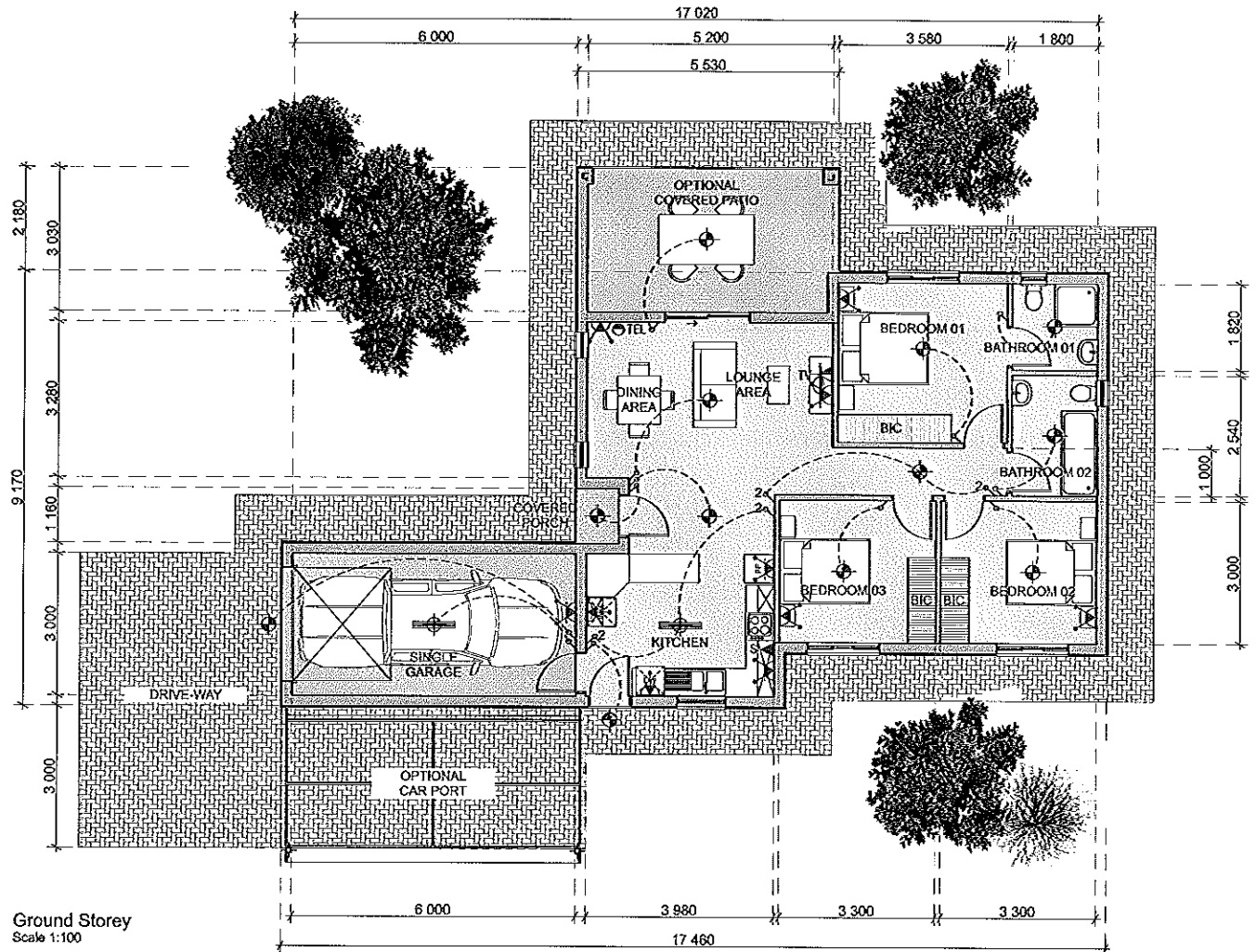
KLERCK ARCHITECTS (PTY) LTD
Aletti Office Park | Block B | Ground Floor
457 Witherite Road | Die Wilgers
Pretoria | South Africa | 0040
PO Box 2242 | Zwavelpoort | 10036

Telephone: +27 (0) 12 807 2170
VAT Reg No. 411 016 8830
Company Number: 2015/304170/07

UNIT TYPE 1B

House - 180.52m²
Optional Patio - 23.30m²

PROTECTED BY THE COPYRIGHT ACT NO. 98 OF 1978
KLERCK ARCHITECTS cc No 1997/050848/23



DOUBLE D&G BUILDING CONTRACTORS,
P.O. Box 356 | Broederstroom | 0240

Telephone: +27 (0) 14 537 8932/3
Fax: +27 (0) 86 670 6264
Email: marlize@ddandg.co.za

CK No. 1996/039688/23 | Member: B.E. Gericke,
Registered Member OF: NHBRC



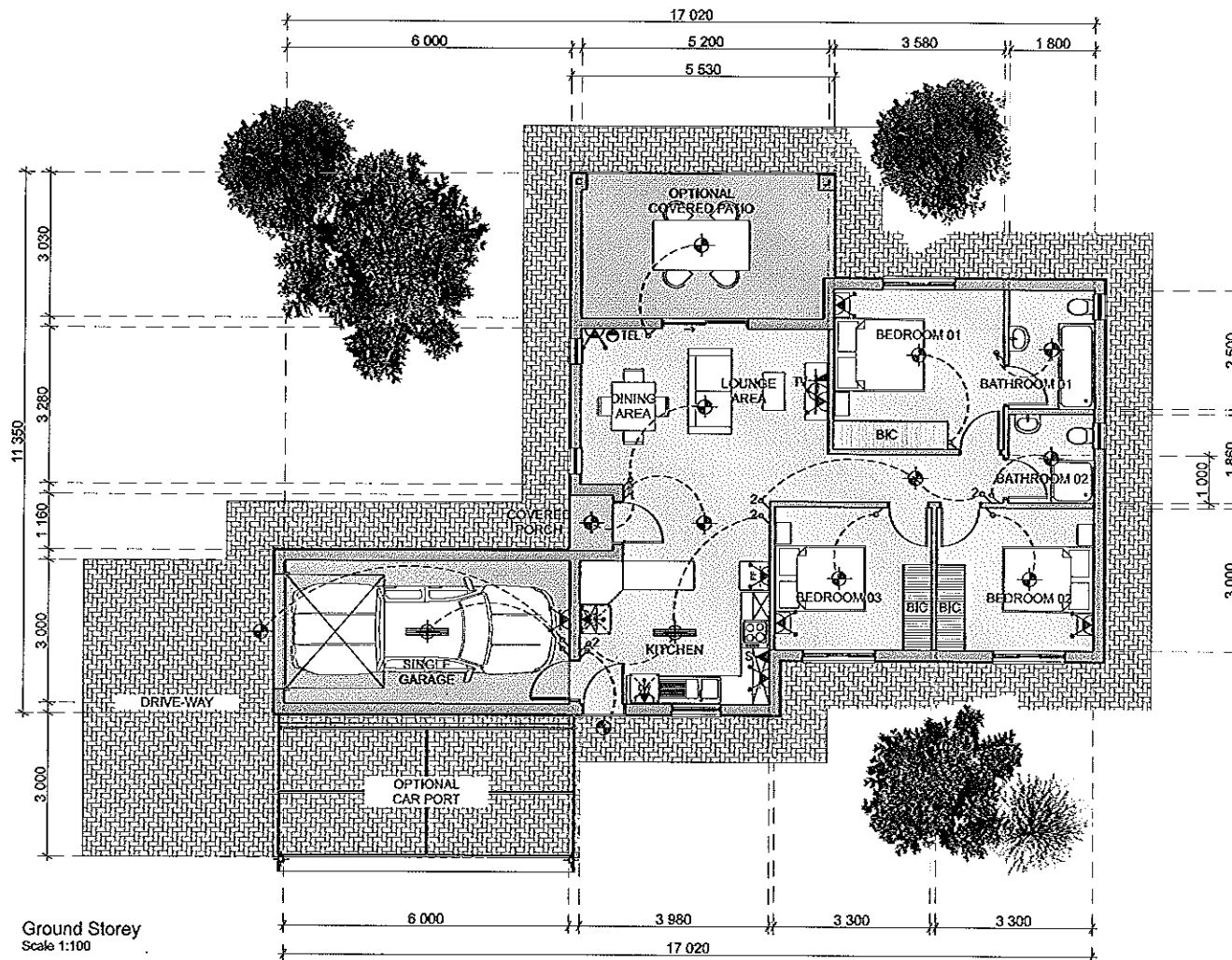
KLERCK ARCHITECTS (PTY) LTD
Alert Office Park | Block B | Ground Floor
457 Witherite Road | Die Wilgers
Pretoria | South Africa | 0040
PO Box 2242 | Zwavelpoort | 0036

Telephone: +27 (0) 12 607 2170
VAT Reg. No. 411 016 8830
Company Number: 2015/504170/07

UNIT TYPE 2

House - 112.11m²
Optional Patio - 16.57m²
Optional Car Port - 19.22m²

PROTECTED BY THE COPYRIGHT ACT NO. 93 OF 1978
KLERCK ARCHITECTS/CK No 1997/050348/23



DOUBLE D&G BUILDING CONTRACTORS,
P.O. Box 3561 Broederstroom 1 0240

Telephone: +27 (0) 14 537 8932/3
Fax: +27 (0) 86 670 6264
Email: maritze@ddandg.co.za

CK No. 1996/039688/23 | Member: B.E. Gericke,
Registered Member Of: NHBC



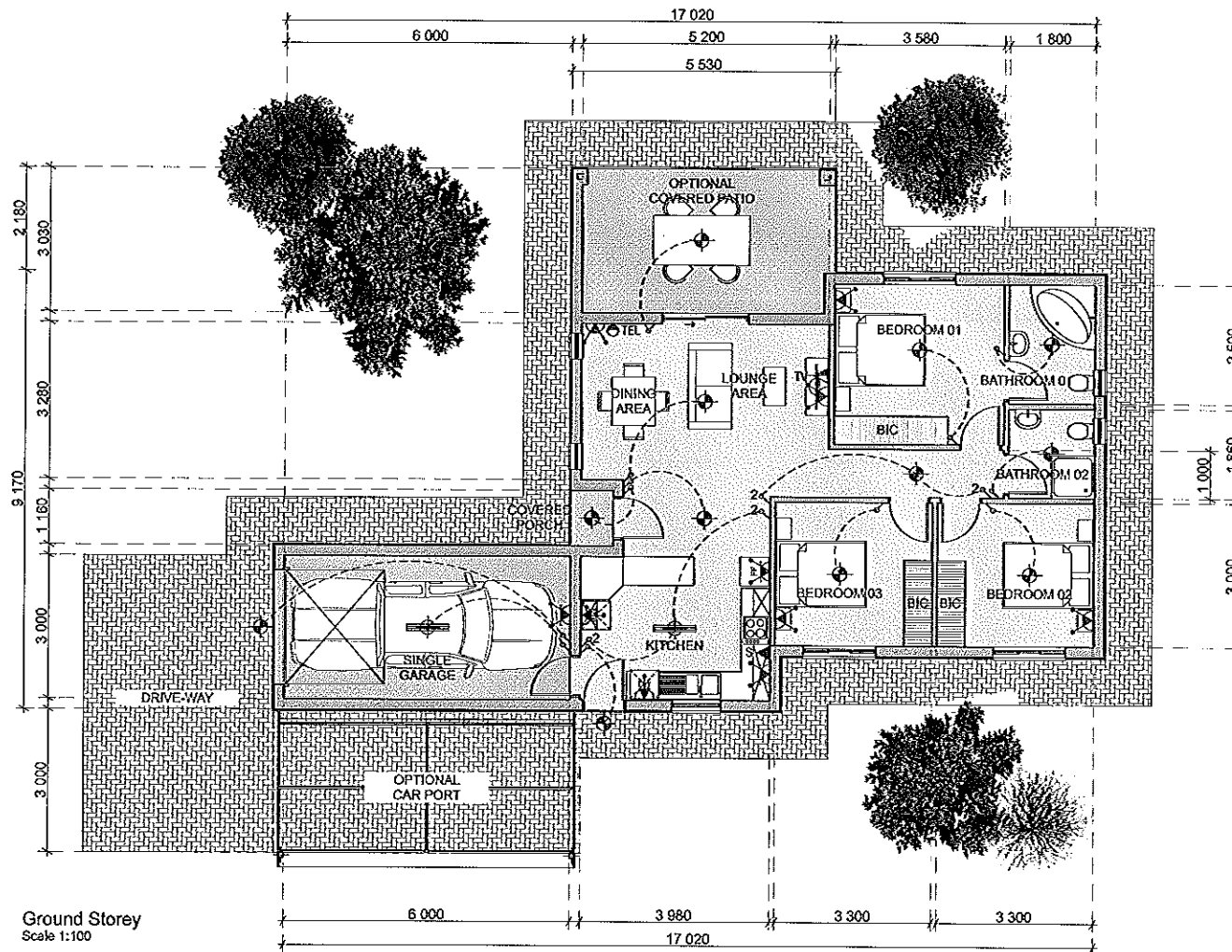
KLERCK ARCHITECTS (PTY) LTD
Alenti Office Park | Block B | Ground Floor
457 Withernse Road | Die Wilgers
Pretoria | South Africa | 0040
PO Box 2242 | Zwaarloop | 0036

Telephone: +27 (0) 12 807 2170
VAT Reg. No. 411 016 8830
Company Number: 2015/204170/07

UNIT TYPE 2B

House - 112.11m²
Optional Patio - 16.57m²
Optional Car Port - 19.22m²

PROTECTED BY THE COPYRIGHT ACT NO. 98 OF 1978
KLERCK ARCHITECTS cc No 1997/050348/23



DOUBLE D&G BUILDING CONTRACTORS.
P.O. Box 3561 Broederstroom | 0240

Telephone: +27 (0) 14 537 8932/3
Fac: +27 (0) 86 670 6264
Email: marlize@ddandg.co.za

CK No. 1996/039688/23 | Member: B.E. Gericke.
Registered Member Of: NHBRC



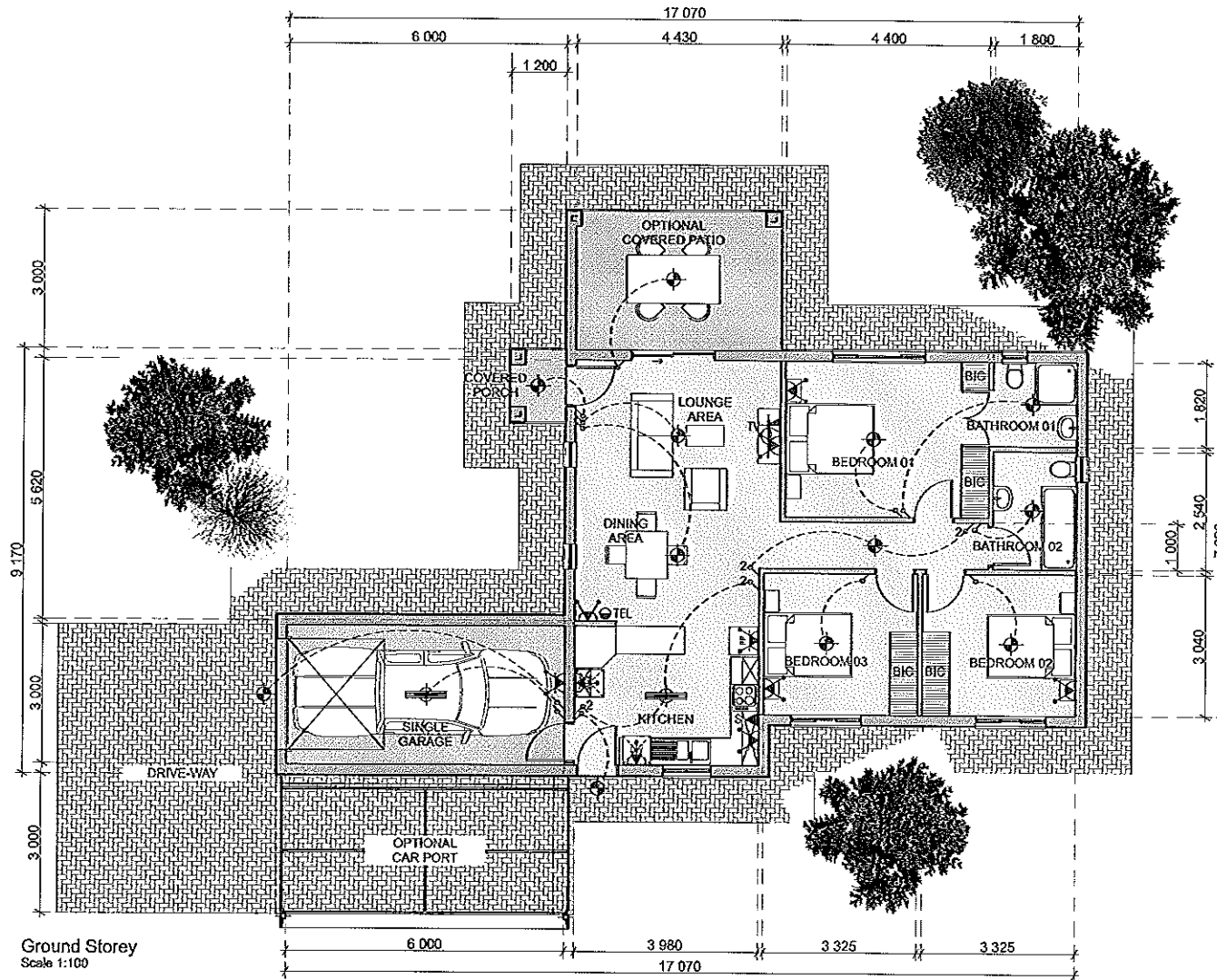
KLERCK ARCHITECTS (PTY) LTD
Aletti Office Park | Block B | Ground Floor
457 Witherie Road | Die Wilgers
Pretoria | South Africa | 0040
PO Box 2242 | Zwavelpoort | 0036

Telephone: +27 (0) 12 807 2170
VAT Reg No. 411 016 8830
Company Number: 2015/304170/07

UNIT TYPE 2C

House - 112.11m²
Optional Patio - 16.57m²
Optional Car Port - 19.22m²

PROTECTED BY THE COPYRIGHT ACT NO. 98 OF 1978
KLERCK ARCHITECTS/CC No 1997/050348/23



DOUBLE D&G BUILDING CONTRACTORS.
P.O. Box 356 | Broederström 1 0240

Telephone: +27 (0) 14 537 8932/3
Fax: +27 (0) 86 670 6264
Email: marlize@ddandg.co.za

CK No. 1996/039688/23 | Member: B.E. Gericke.
Registered Member Of: NHRC



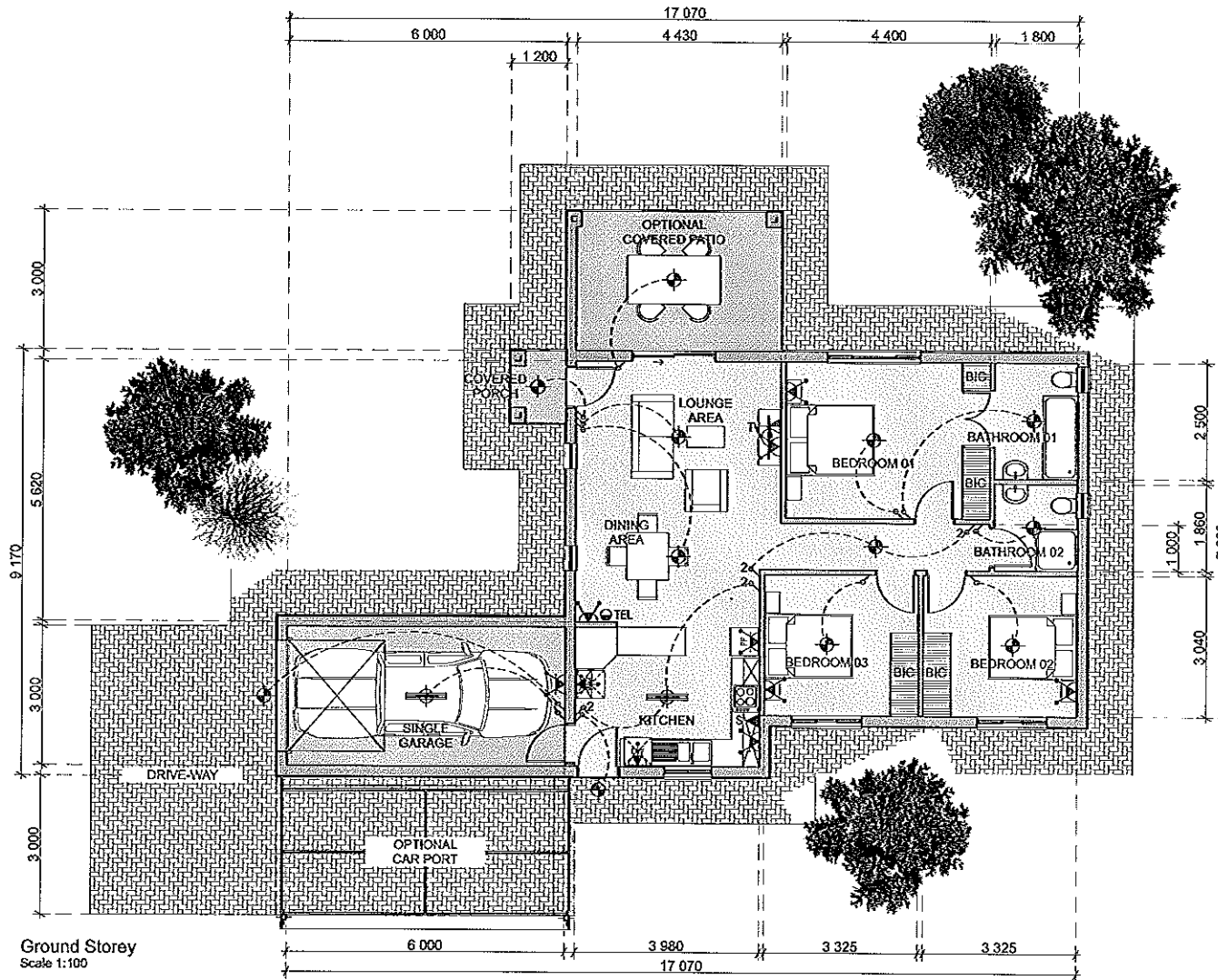
KLERCK ARCHITECTS (PTY) LTD
Arents Office Park | Block B | Ground Floor
457 Witherite Road | Die Wilgers
Pretoria | South Africa | 0040
PO Box 2242 | Zwavelpoort | 0036

Telephone: +27 (0) 12 807 2170
VAT Reg. No. 411 016 8630
Company Number: 2015/304170/07

UNIT TYPE 3

House - 119.17m²
Optional Patio - 13.95m²
Optional Car Port - 19.22m²

PROTECTED BY THE COPYRIGHT ACT NO. 98 OF 1978
KLERCK ARCHITECTS No 1997/050348/23



Ground Storey
Scale 1:100



DOUBLE D&G BUILDING CONTRACTORS,
PO Box 356 | Broederstroom | 0240

Telephone: +27 (0) 14 537 8932/3
Fax: +27 (0) 86 670 6264
Email: marlize@ddandg.co.za

CK No. 1996/039688/23 | Member: B.E. Cericke,
Registered Member Of: NHBRC



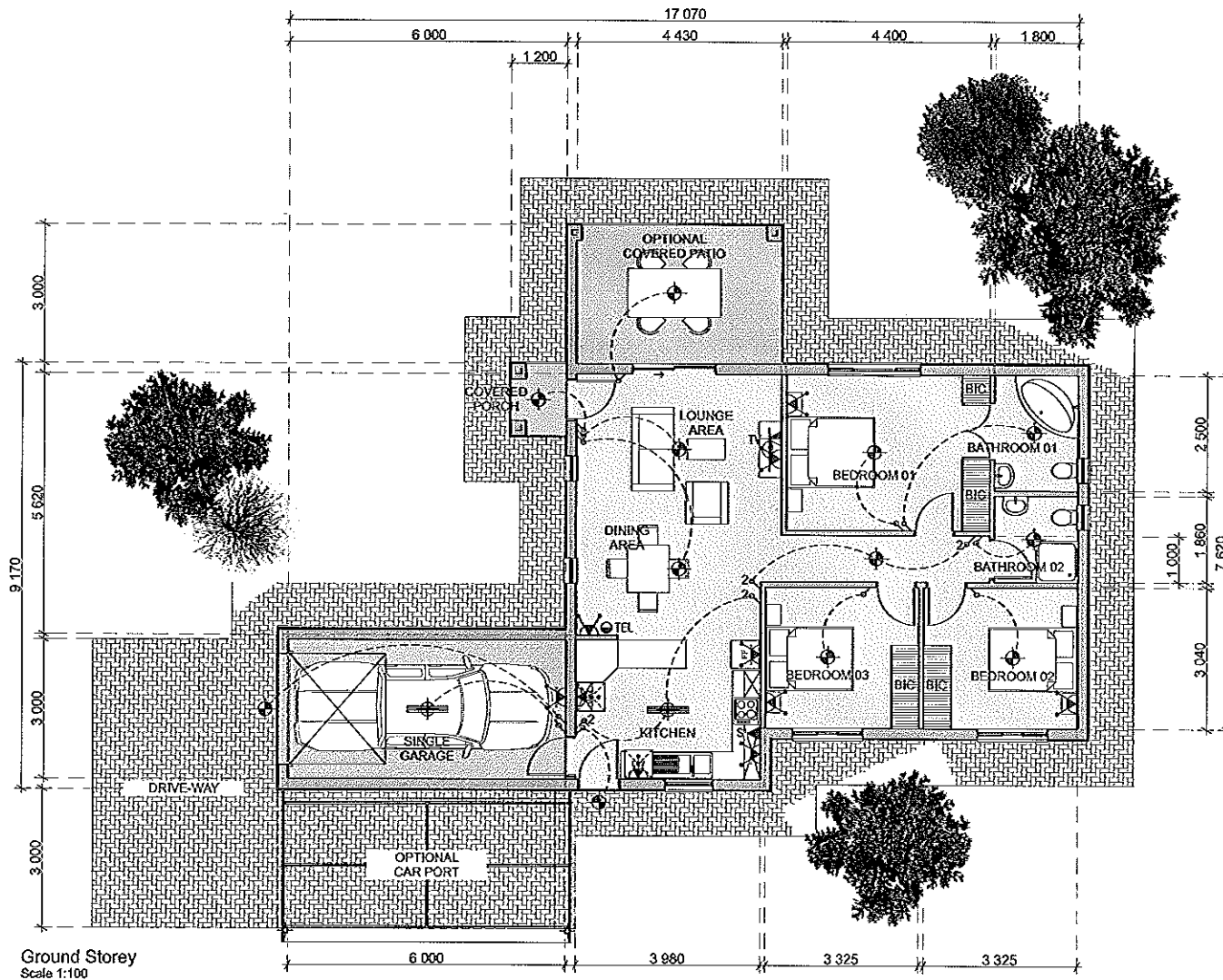
KLERCK ARCHITECTS (PTY) LTD
Aletti Office Park | Block B | Ground Floor
457 Witherite Road | Die Wilgers
Pretoria | South Africa | 0040
PO Box 2242 | Zwa:elpoort | 0036

Telephone: +27 (0) 12 807 2170
VAT Reg No. 411 016 8830
Company Number: 2015/304170/07

UNIT TYPE 3B

House - 119.17m²
Optional Patio - 13.95m²
Optional Car Port - 19.22m²

PROTECTED BY THE COPYRIGHT ACT NO. 98 OF 1978
KLERCK ARCHITECTS cc No 1997/050348/23



DOUBLE D&G BUILDING CONTRACTORS,
P.O. Box 356 | Broederström | 0240

Telephone: +27 (0) 14 537 8932/3
Fax: +27 (0) 86 670 6264
Email: marlize@ddandg.co.za

CK No. 1996/039688/23 | Member: B.E. Gerick,
Registered Member Of: NHBRC



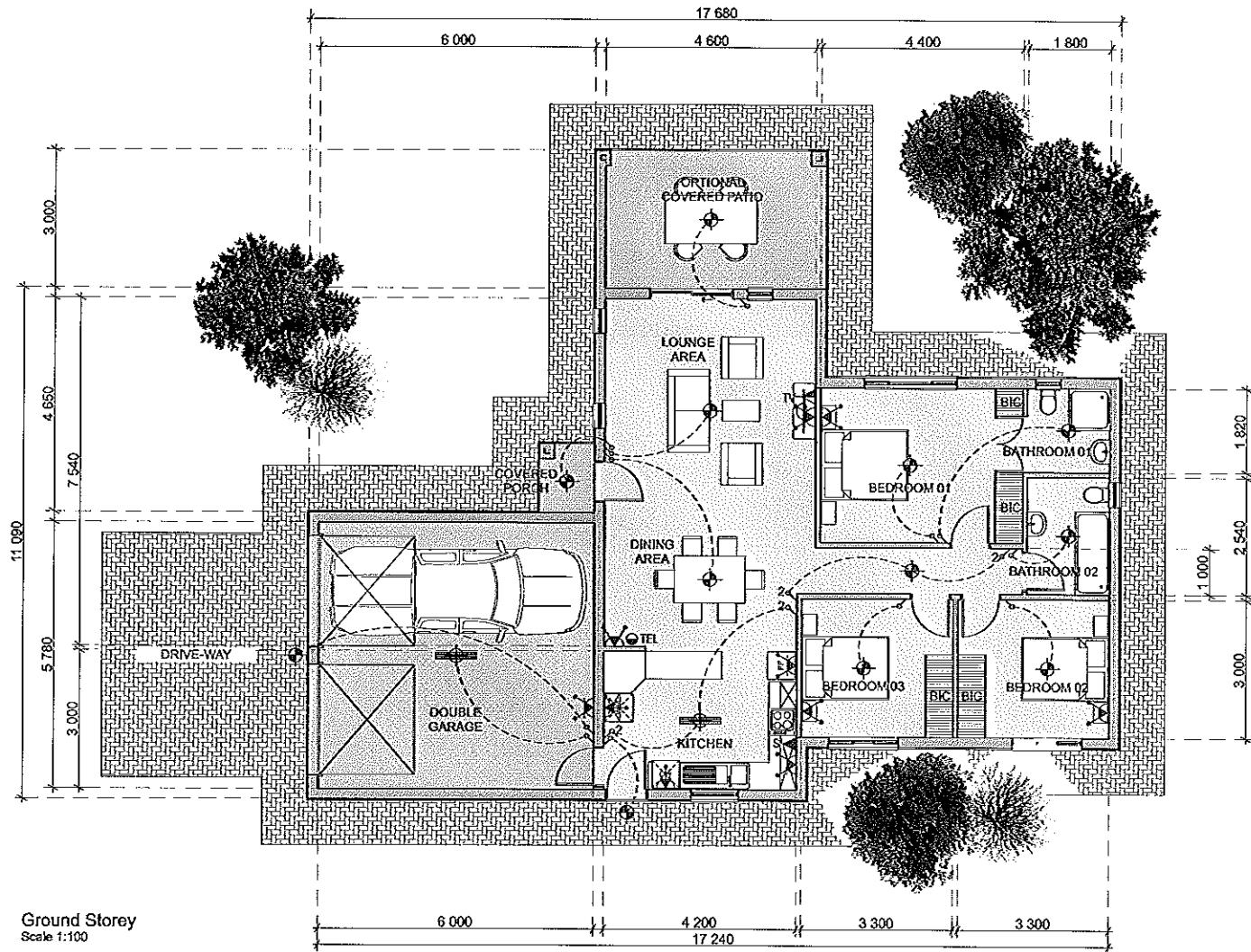
KLERCK ARCHITECTS (PTY) LTD
Alert Office Park | Block B | Ground Floor
457 Witherite Road | Die Wilgers
Pretoria | South Africa | 0040
PO Box 2242 | Zwavelpoort | 0036

Telephone: +27 (0) 12 807 2170
VAT Reg. No. 411 016 8830
Company Number: 2015/504170/07

UNIT TYPE 3C

House - 119.17m²
Optional Patio - 13.95m²
Optional Car Port - 19.22m²

PROTECTED BY THE COPYRIGHT ACT NO. 98 OF 1978
KLERCK ARCHITECTS cc No 1997/050348/23



DOUBLE D&G BUILDING CONTRACTORS.
P.O. Box 3561 Broederstroom 10240

Telephone: +27 (0) 14 537 8932/3
Fax: +27 (0) 86 670 6264
Email: marilize@ddandg.co.za

CK No. 1996/039688/23 | Member: B.E. Gerick.
Registered Member Of: NHBRC

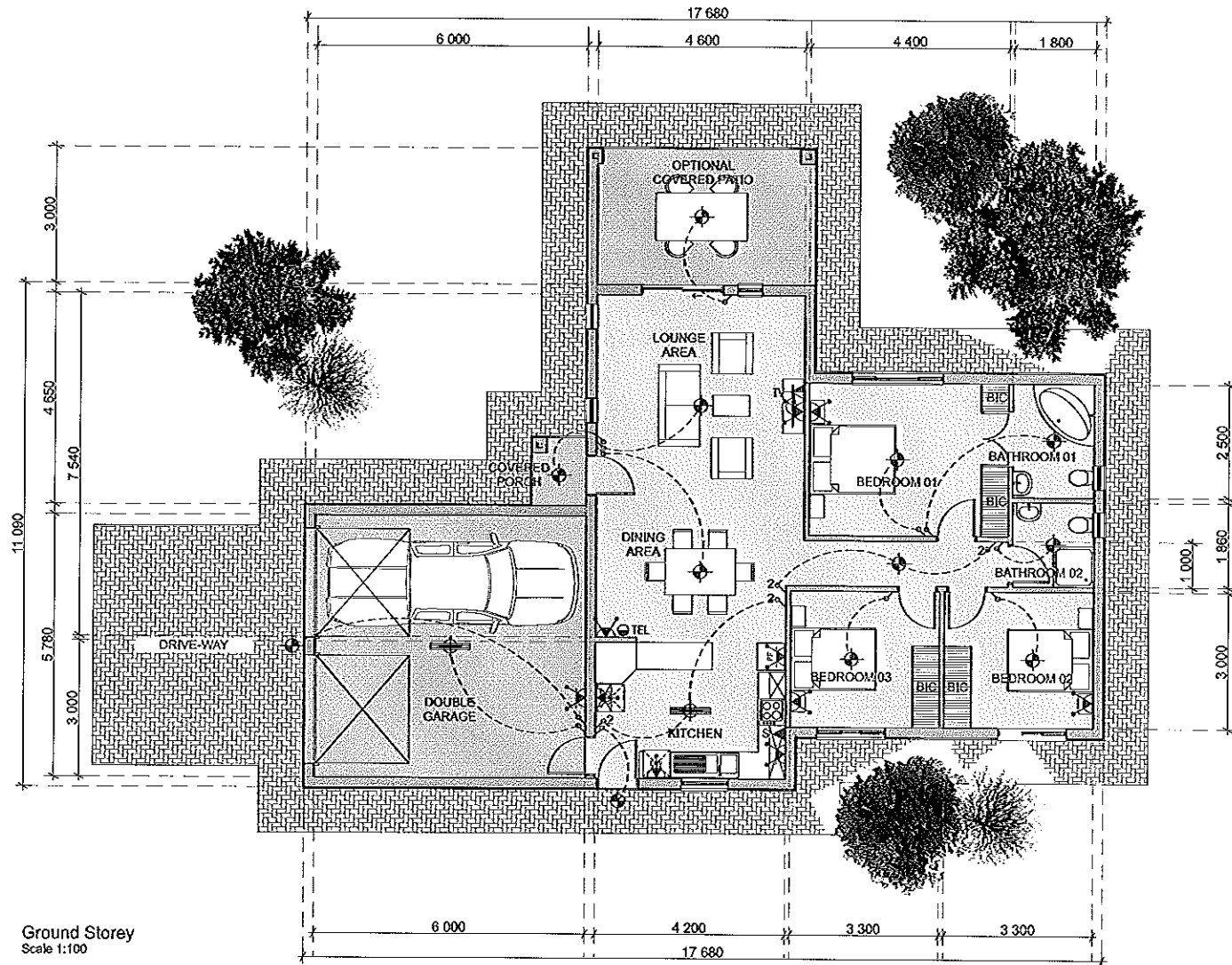


KLERCK ARCHITECTS (PTY) LTD
Aletti Office Park I Block B I Ground Floor
457 Witherite Road I Die Wilgers
Pretoria I South Africa I 0040
PO Box 2242 I Zwavelpoort I 0036

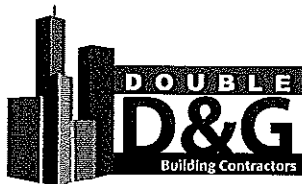
Telephone: +27 (0) 12 807 2170
VAT Reg No. 411 016 8830
Company Number: 2015/304170/07

UNIT TYPE 4
House - 147.40m²
Optional Patio - 15.12m²

PROTECTED BY THE COPYRIGHT ACT NO. 98 OF 1978
KLERCK ARCHITECTS Sec No 1997/050848/23



Ground Storey
Scale 1:100



DOUBLE D&G BUILDING CONTRACTORS,
P.O. Box 356 | Broederström | 0240

Telephone: +27 (0) 14 537 8932/3
Fax: +27 (0) 86 670 6264
Email: marlize@ddandg.co.za

CK No. 1996/039688/23 | Member: B.E. Gericke,
Registered Member Of: NHBRC

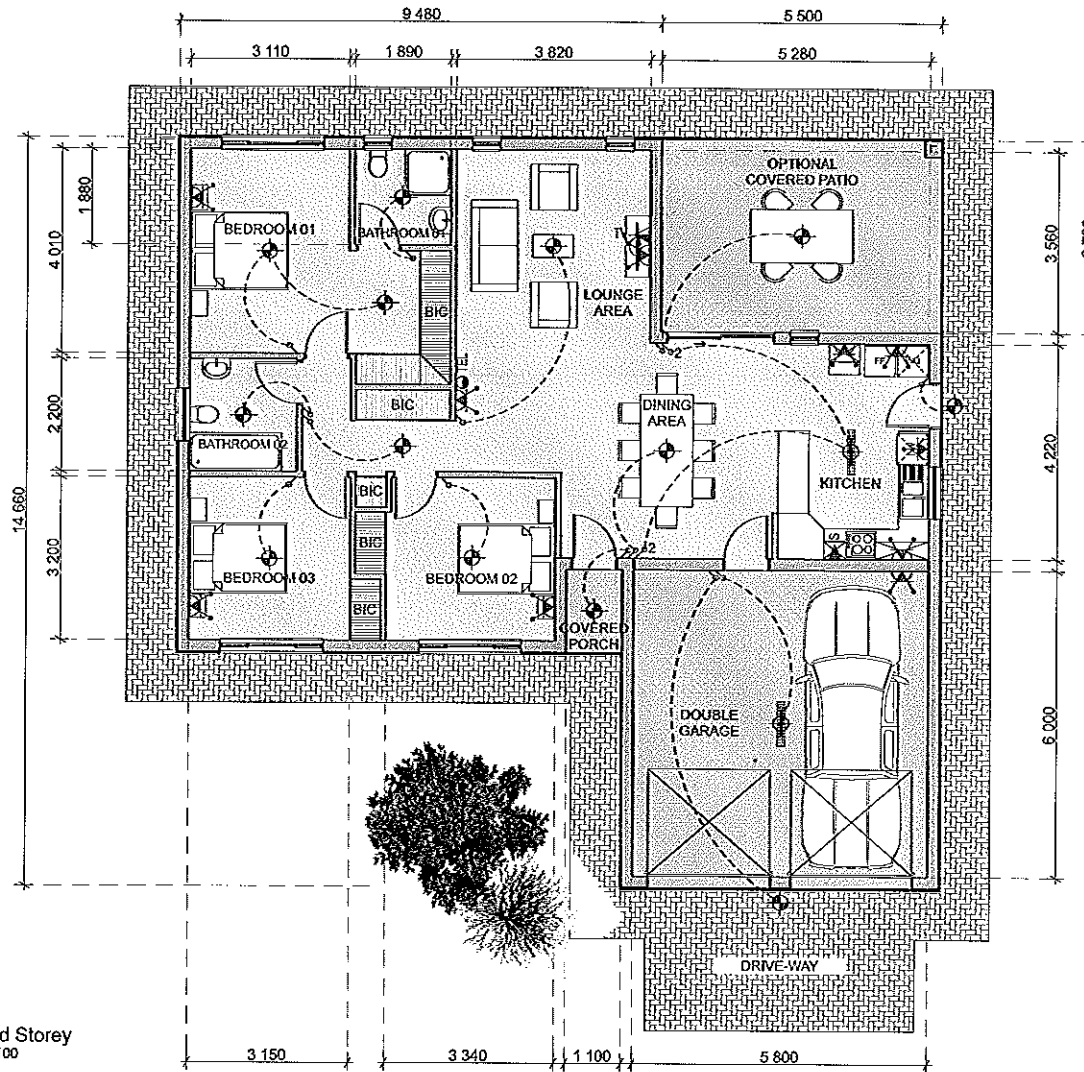


KLERCK ARCHITECTS (PTY) LTD
Aletti Office Park | Block B | Ground Floor
457 Witherite Road | Die Wilgers
Pretoria | South Africa | 0040
PO Box 2242 | Zwavelpoort | 0036

Telephone: +27 (0) 12 807 2170
VAT Reg No. 411 016 8830
Company Number: 2015/304170/07

UNIT TYPE 4B
House - 147.40m²
Optional Patio - 15.12m²

PROTECTED BY THE COPYRIGHT ACT NO. 98 OF 1978
KLERCK ARCHITECTS cc No 1997/050348/23



Ground Storey
Scale 1:100



DOUBLE D&G BUILDING CONTRACTORS.
P.O. Box 356 | Broederstroom | 0240

Telephones: +27 (0) 14 537 8932/3
Fax: +27 (0) 86 670 6264
Email: marize@ddandg.co.za

CK No. 1996/039688/23 | Member: B.E. Gericke.
Registered Member Of: NHBC

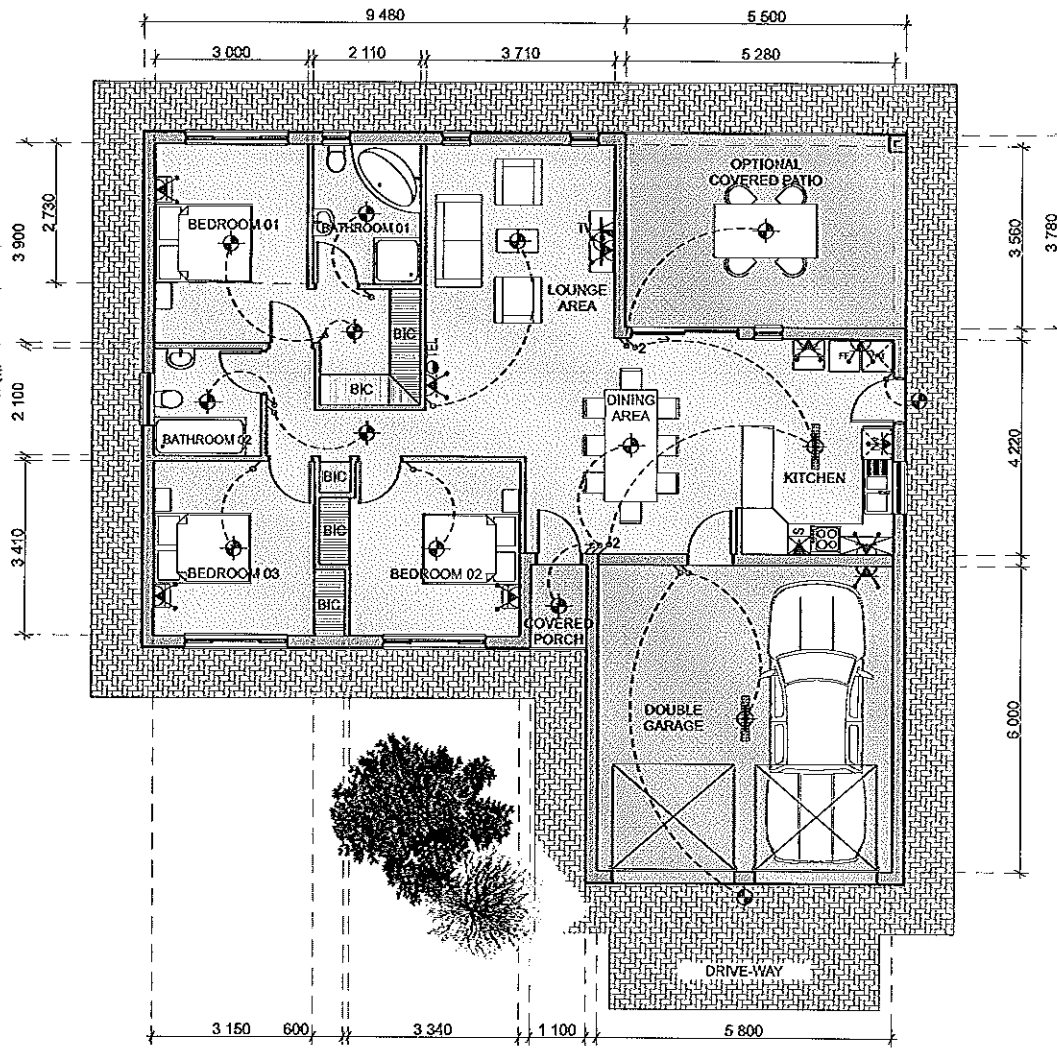


KLERCK ARCHITECTS (PTY) LTD
Aletti Office Park | Block B1 Ground Floor
457 Witherite Road | Die Wilgers
Pretoria | South Africa | 0040
PO Box 2242 | Zwavelpoort | 0036

Telephones: +27 (0) 12 807 2170
VAT Reg No. 411 016 8830
Company Number: 2015/304170/07

UNIT TYPE 5
House - 158.70m²
Optional Patio - 20.80m²

PROTECTED BY THE COPYRIGHT ACT NO. 98 OF 1978
KLERCK ARCHITECTS cc No 1997/030348/23



Ground Storey
Scale 1:100



DOUBLE D&G BUILDING CONTRACTORS,
P.O. Box 356 | Broedersroom | 0240

Telephone: +27 (0) 14 537 8932/3
Fax: +27 (0) 86 670 6264
Email: marilize@ddandg.co.za

CK No. 1996/039688/23 | Member: B.E. Gercke,
Registered Member Of: NHBC

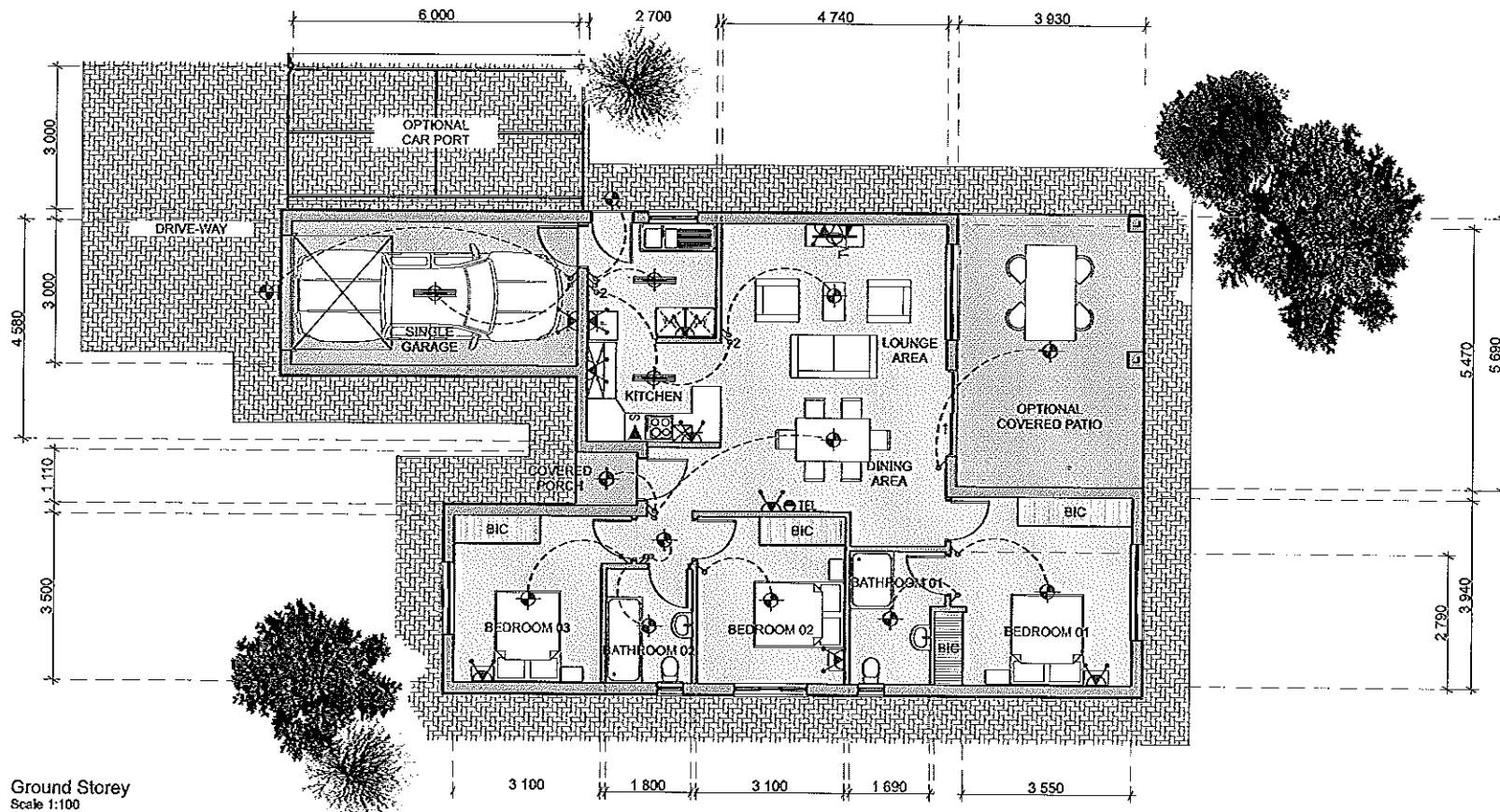


KLERCK ARCHITECTS (PTY) LTD
Aletis Office Park | Block B | Ground Floor
457 Witherite Road | Die Wilgers
Pretoria | South Africa | 0040
PO Box 2242 | Zwavelpoort | 0036

Telephone: +27 (0) 12 807 2170
VAT Reg No. 411 016 8830
Company Number: 2015/304170-07

UNIT TYPE 5B
House - 158.70m²
Optional Patio - 20.80m²

PROTECTED BY THE COPYRIGHT ACT NO. 93 OF 1978
KLERCK ARCHITECTS No 1997/056348/23



DOUBLE D&G BUILDING CONTRACTORS,
P.O. Box 3561 Broederstroom 1 0240

Telephone: +27 (0) 14 537 8932/3
Fax: +27 (0) 86 670 6264
Email: marlize@ddandg.co.za

CK No. 1996/039688/23 | Member: B.E. Gericke,
Registered Member Of: NHBRC



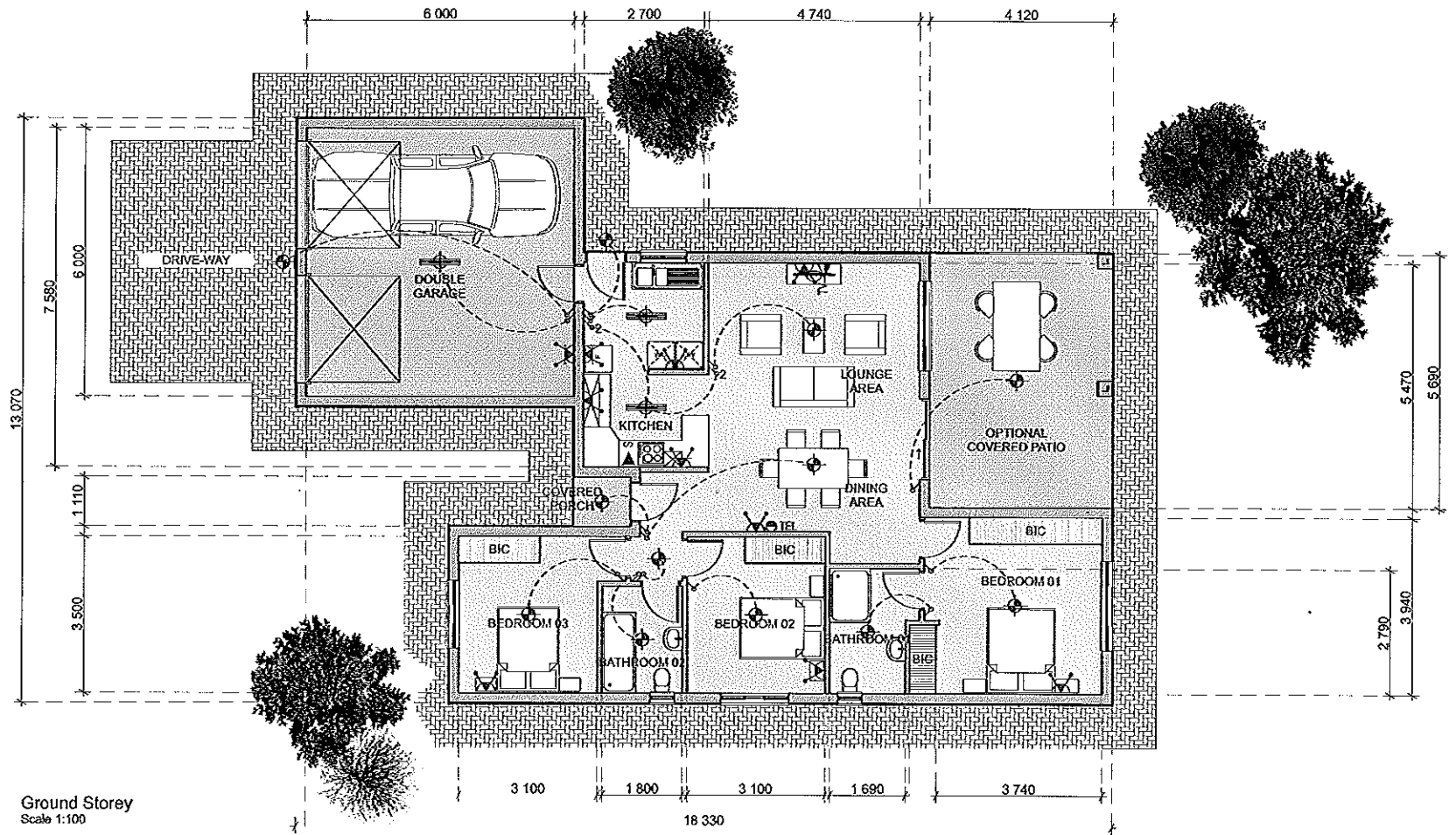
KLERCK ARCHITECTS (PTY) LTD
Aletti Office Park 1 Block B 1 Ground Floor
457 Witherite Road 1 Die Wilgers
Pretoria 1 South Africa 1 0040
PO Box 2242 1 Zwaelpoort 1 0036

Telephone: +27 (0) 12 807 2170
VAT Reg No. 411 016 8830
Company Number: 2015/304170/07

UNIT TYPE 6

House - 130.02m²
Optional Patio - 22.38m²
Optional Car Port - 19.22m²

PROTECTED BY THE COPYRIGHT ACT NO. 98 OF 1978
KLERCK ARCHITECTS No 1997/050848/23



Ground Storey
Scale 1:100



DOUBLE D&G BUILDING CONTRACTORS.
P.O. Box 356 | Broederstroom | 0240

Telephone: +27 (0) 14 537 8932/3
Fax: +27 (0) 86 670 6264
Email: marlize@ddandg.co.za

CK No. 1996/039688/23 | Member: B.E. Gericks.
Registered Member Of: NHBRC



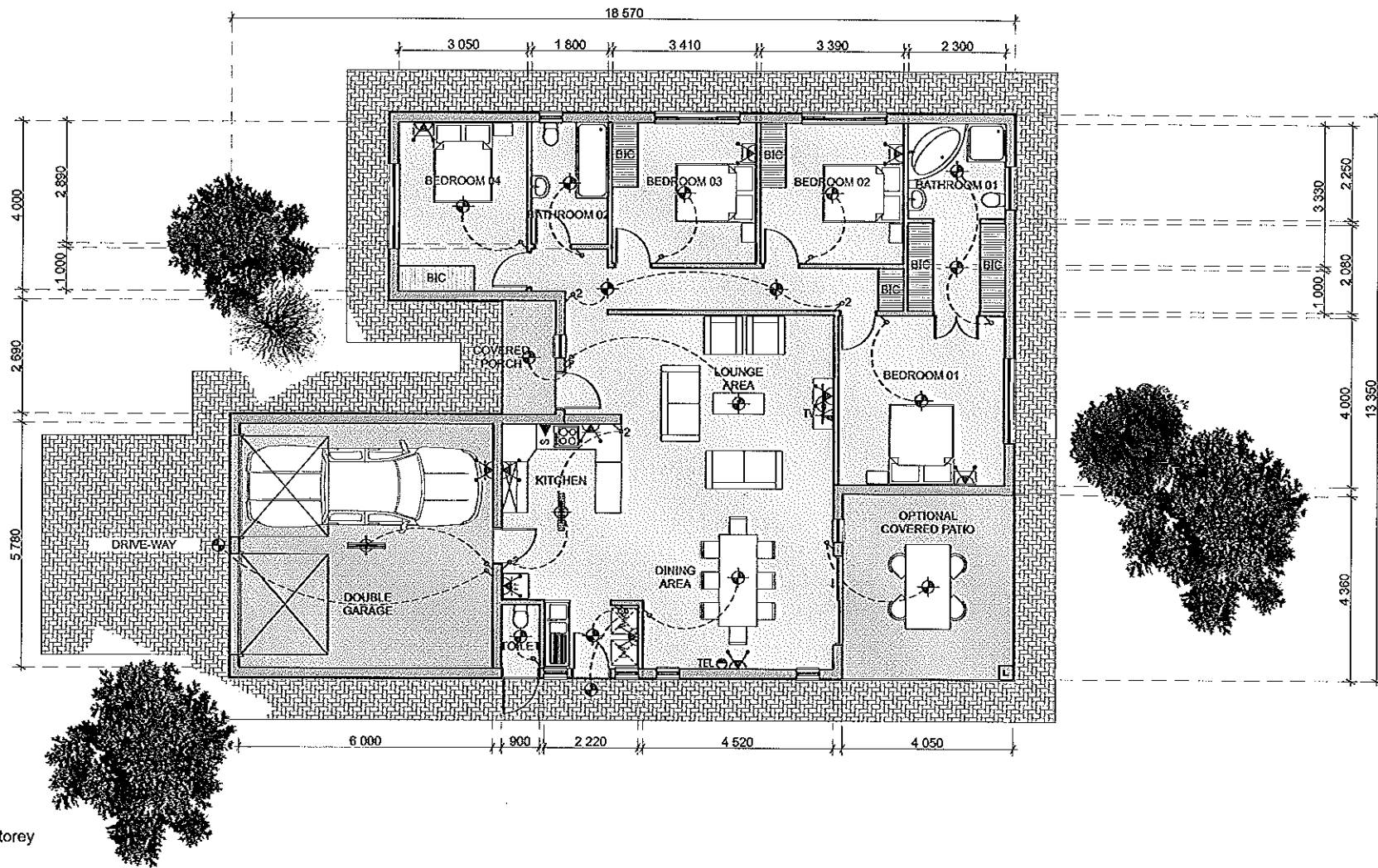
KLERCK ARCHITECTS (PTY) LTD
Aletti Office Park | Block B | Ground Floor
457 Wiberite Road | Die Wilgers
Pretoria | South Africa | 0040
PO Box 2242 | Zwavelpoort | 0036

Telephone: +27 (0) 12 807 2170
VAT Reg No. 411 016 8830
Company Number: 2015/304170/07

UNIT TYPE 6B

House - 150.17m²
Optional Patio - 23.44m²

PROTECTED BY THE COPYRIGHT ACT NO. 98 OF 1978
KLERCK ARCHITECTS cc No 1997/050348/23



DOUBLE D&G BUILDING CONTRACTORS.
P.O. Box 3561 Broederstroom 1 0240

Telephone: +27 (0) 14 537 8932/3
Fac: +27 (0) 86 670 8264
Email: marlize@ddandg.co.za

CK No. 1996/039688/23 | Member: B.E. Gericke.
Registered Member Of: NHBRC

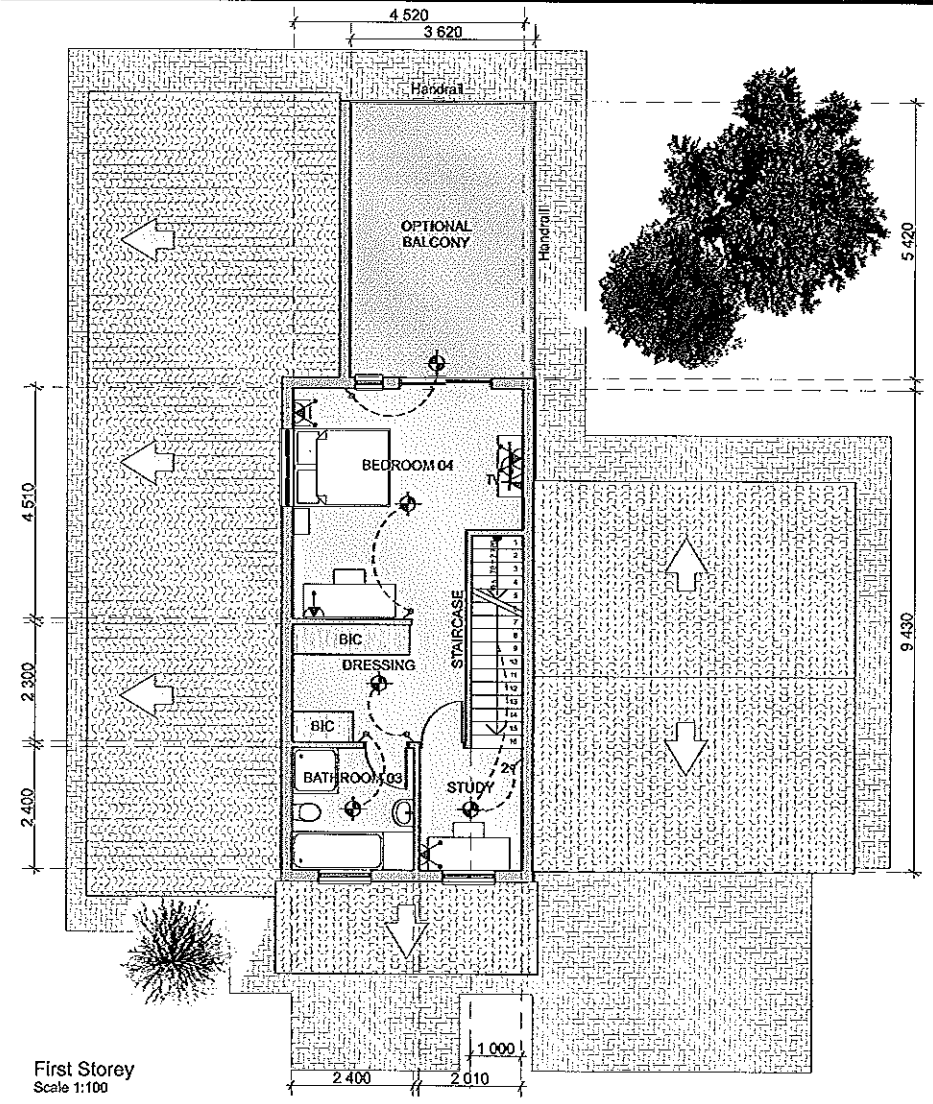
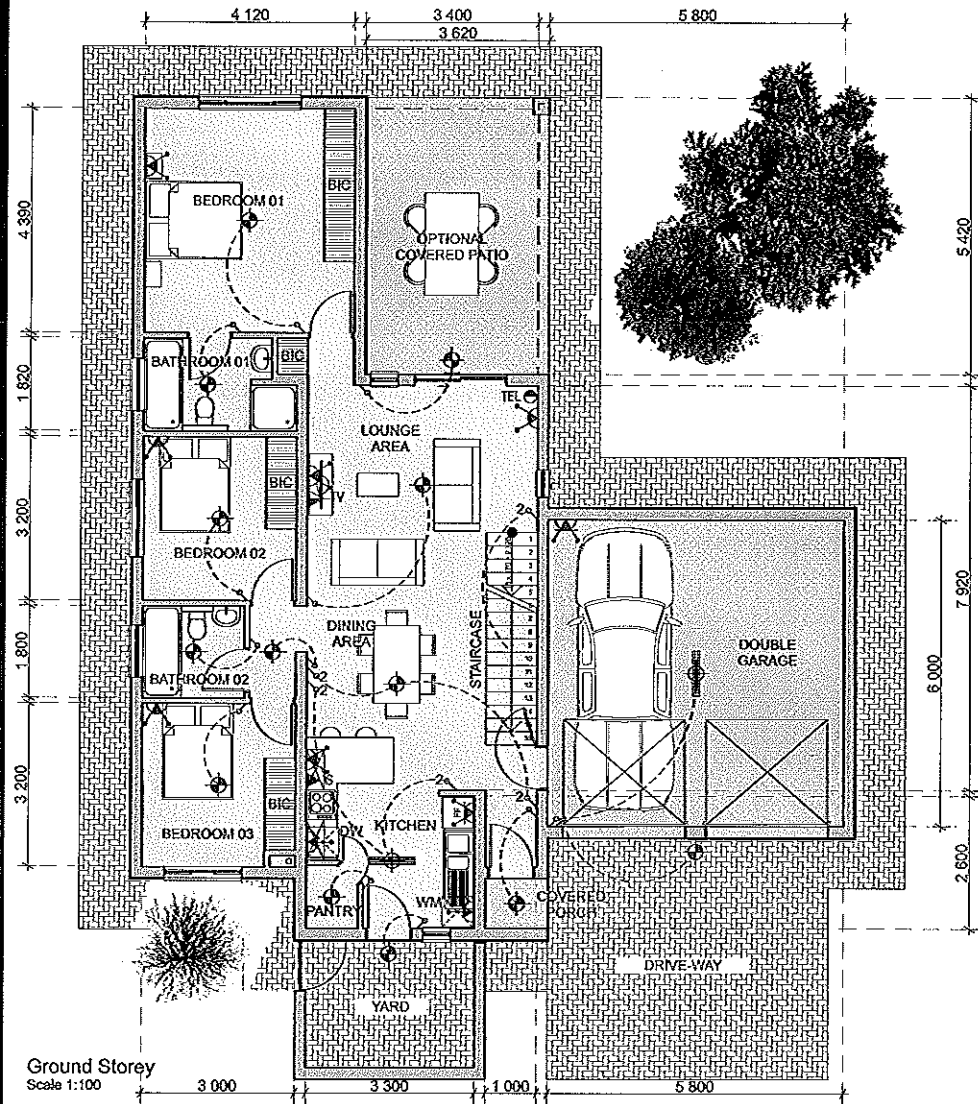


KLERCK ARCHITECTS (PTY) LTD
Aletti Office Park | Block B | Ground Floor
457 Witherize Road | Die Wilgers
Pretoria | South Africa | 0010
PO Box 2242 | Zwaanspoort | 0036

Telephone: +27 (0) 12 807 2170
VAT Reg No. 411 016 8830
Company Number: 2015/304170/07

UNIT TYPE 7
House - 196.32m²
Optional Patio - 17.66m²

PROTECTED BY THE COPYRIGHT ACT NO. 98 OF 1978
KLERCK ARCHITECTS/Sec No 1997/050818/23



DOUBLE D&G BUILDING CONTRACTORS,
P.O. Box 356 | Broedersroom 1 0240

Telephone: +27 (0) 14 537 8932/3
Fax: +27 (0) 86 670 6264
Email: marlize@ddandg.co.za

CK No. 1996/039688/23 | Member: B.E. Gericke,
Registered Member Of: NHBRC



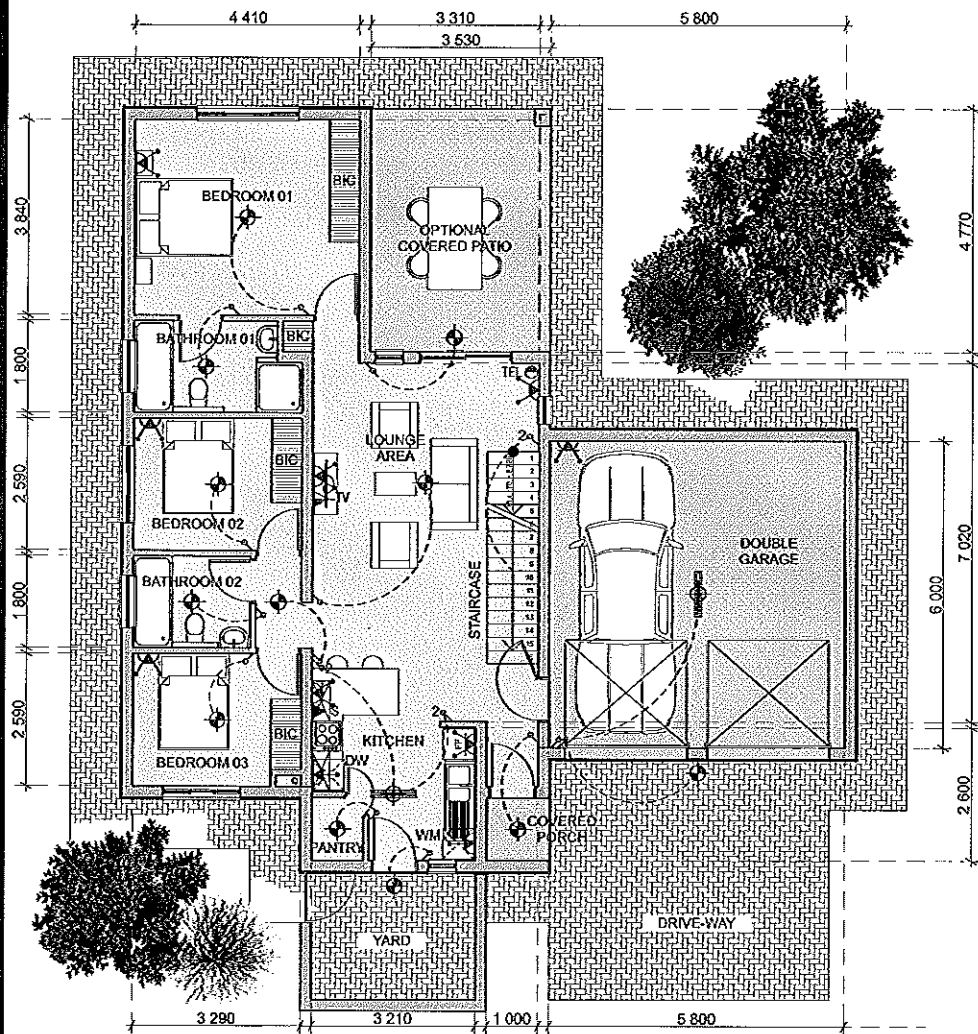
KLERCK ARCHITECTS (PTY) LTD
Alenti Office Park | Block B | 1 Ground Floor
457 Witherite Road | Die Wilgers
Pretoria | South Africa 10040
PO Box 2242 | Zwavelpoort 1 0036

Telephone: +27 (0) 12 807 2170
VAT Reg No. 411 016 8830
Company Number: 2015/304170/07

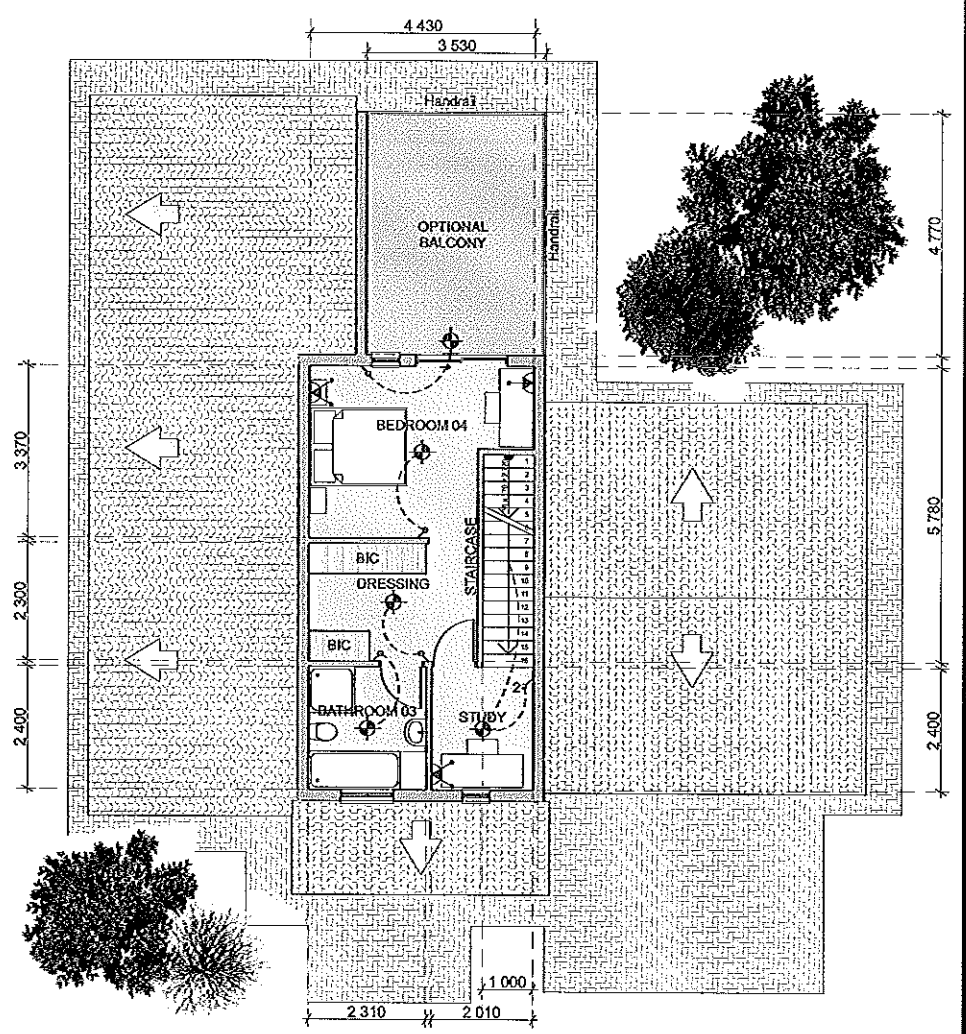
UNIT TYPE A

House - 194.97m²
Optional Patio - 19.62m²
Optional Balcony - 19.62m²

PROTECTED BY THE COPYRIGHT ACT NO. 98 OF 1978
KLERCK ARCHITECTS cc No 1997/050848/23



Ground Storey
Scale 1:100



First Storey
Scale 1:100



DOUBLE D&G BUILDING CONTRACTORS,
P.O. Box 356 | Broederstroom | 0240

Telephone: +27 (0) 14 537 8932/3
Fax: +27 (0) 86 670 6264
Email: marlize@ddandg.co.za

CK No. 1996/039688/23 | Member: B.E. Gericke,
Registered Member Of: NHBRC



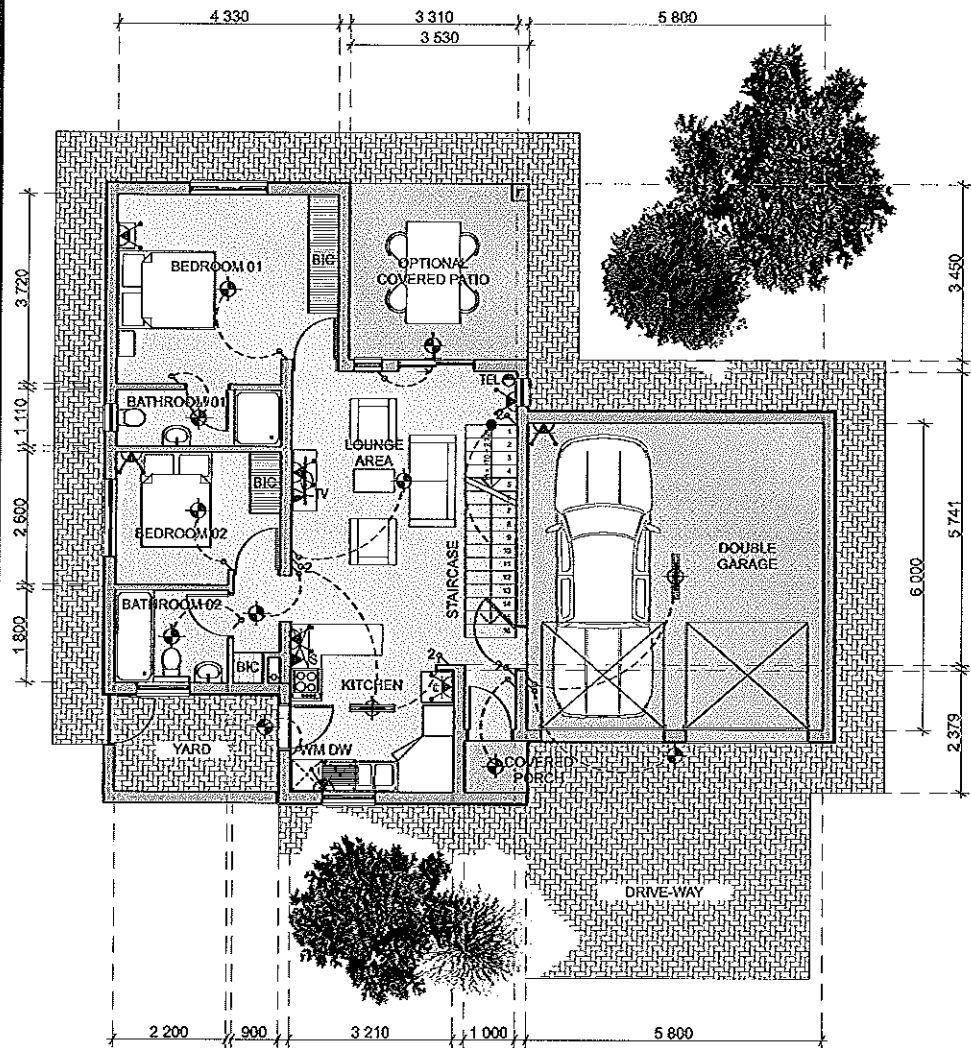
KLERCK ARCHITECTS (PTY) LTD
Alenti Office Park | Block B | Ground Floor
457 Witherite Road | Die Wilgers
Pretoria | South Africa | 0040
PO Box 2242 | Zwaerelport | 0036

Telephone: +27 (0) 12 807 2170
VAT Reg No. 411 016 8830
Company Number: 2015/304170/07

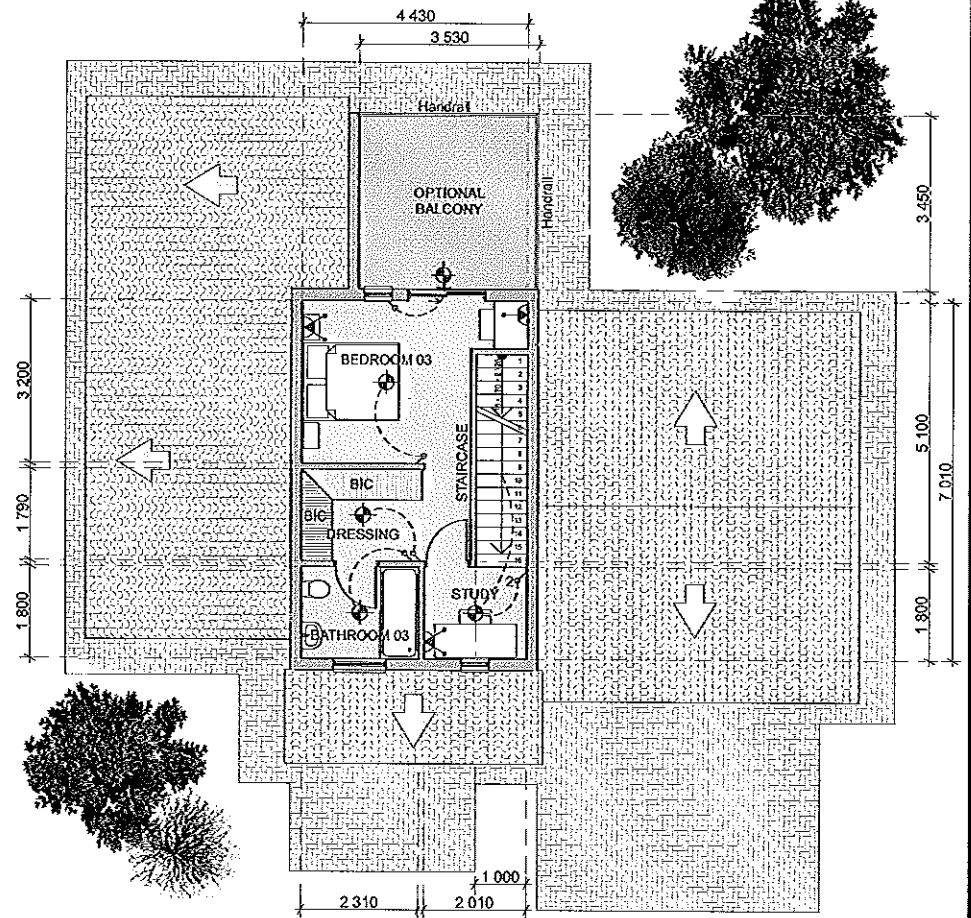
UNIT TYPE B

House - 180.43m²
Optional Patio - 16.84m²
Optional Balcony - 16.84m²

PROTECTED BY THE COPYRIGHT ACT NO. 98 OF 1978
KLERCK ARCHITECTS cc No 1597/050848/23



Ground Storey
Scale 1:100



First Storey
Scale 1:100



DOUBLE D&G BUILDING CONTRACTORS,
P.O Box 356 | Broederstroom 1 0240

Telephone: +27 (0) 14 537 8932/3
Fax: +27 (0) 86 670 6264
Email: marize@ddandg.co.za

CK No. 1996/039688/23 | Member: B.E. Gericks
Registered Member Of: NHBRC



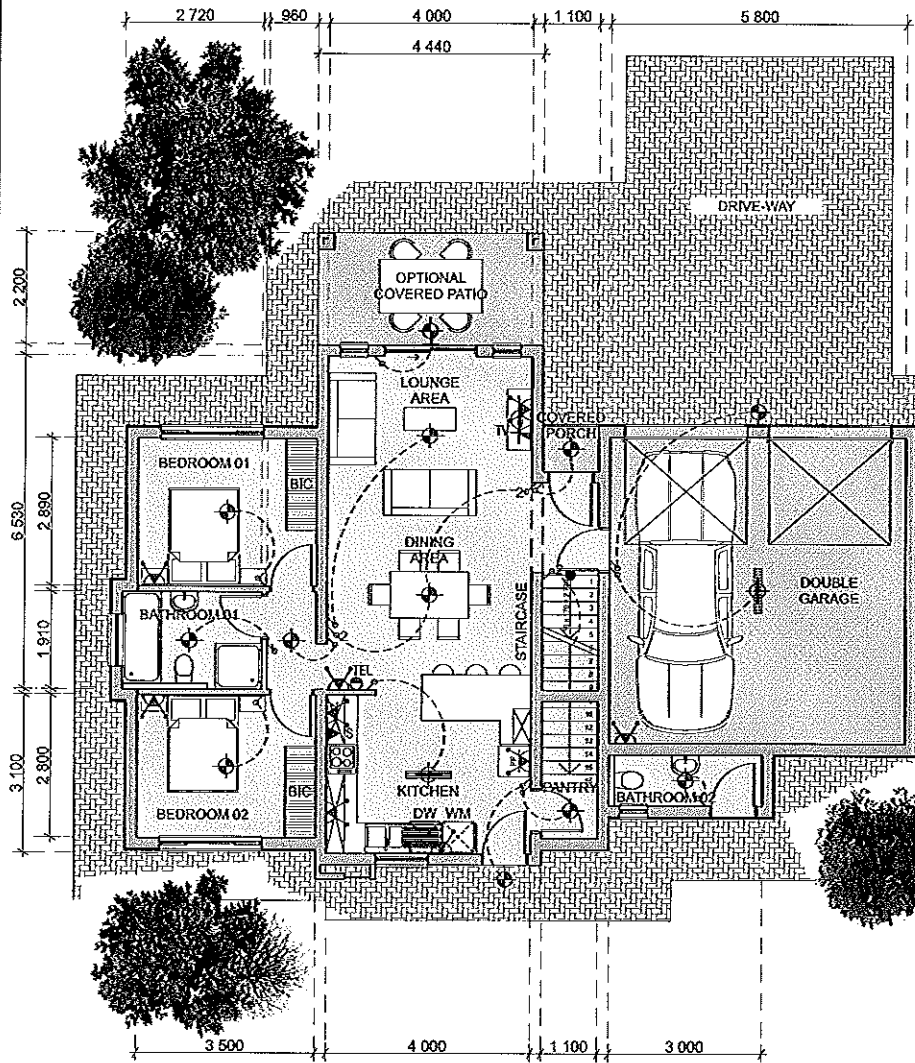
KLERCK ARCHITECTS (PTY) LTD
Aletti Office Park | Block B | Ground Floor
457 Withers Road | Die Wilgers
Pretoria | South Africa | 0040
PO Box 2242 | Zwaenepoort | 0036

Telephone: +27 (0) 12 807 2170
VAT Reg No. 411 016 8830
Company Number: 2015/304170/07

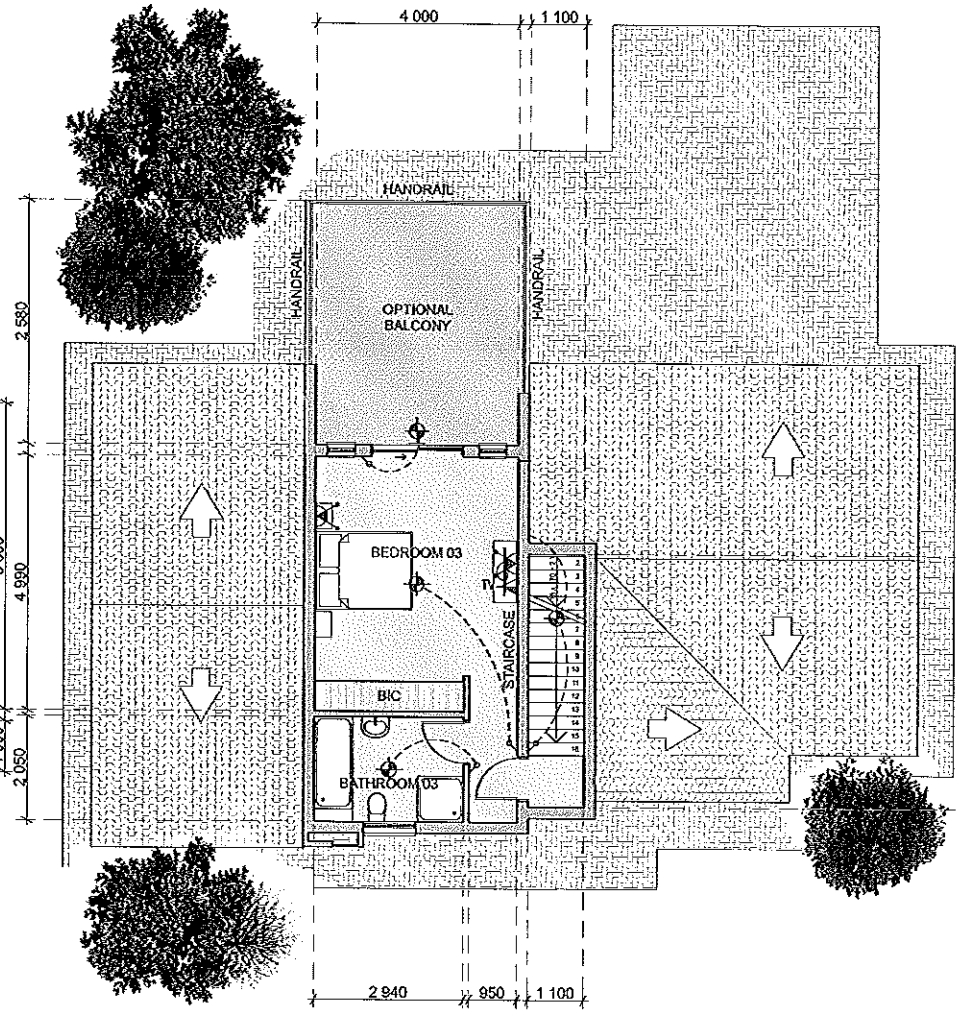
UNIT TYPE C

House - 152.03m²
Optional Patio - 12.18m²
Optional Balcony - 12.18m²

PROTECTED BY THE COPYRIGHT ACT NO. 98 OF 1978
KLERCK ARCHITECTS cc No 1997/030848/23



Ground Storey
Scale 1:100



First Storey
Scale 1:100



DOUBLE D&G BUILDING CONTRACTORS.
P.O. Box 356 | Broederstroom | 0240

Telephone: +27 (0) 14 537 6932/3
Fax: +27 (0) 86 670 6264
Email: maritze@ddandg.co.za

CK No. 1996/039688/23 | Member: B.E. Gericke.
Registered Member Of: NHBC



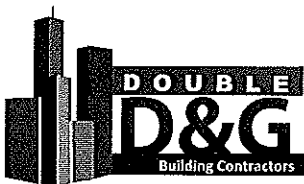
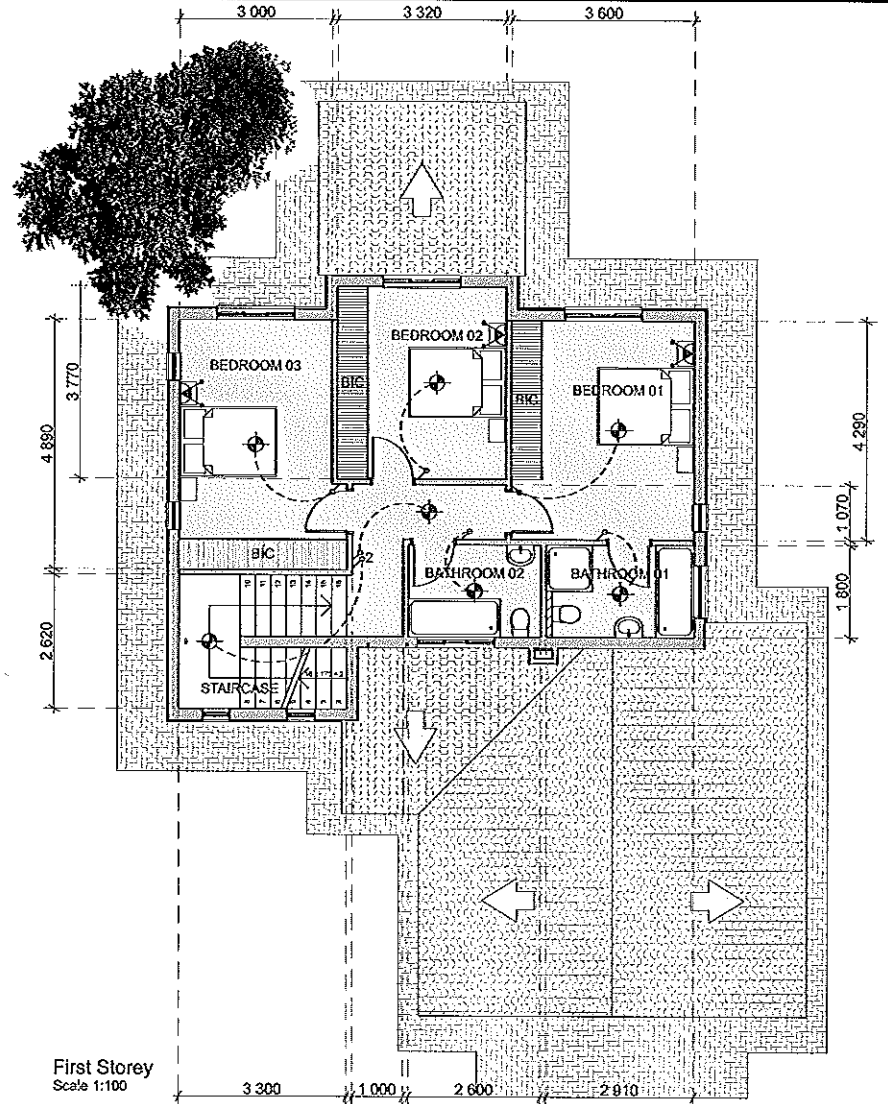
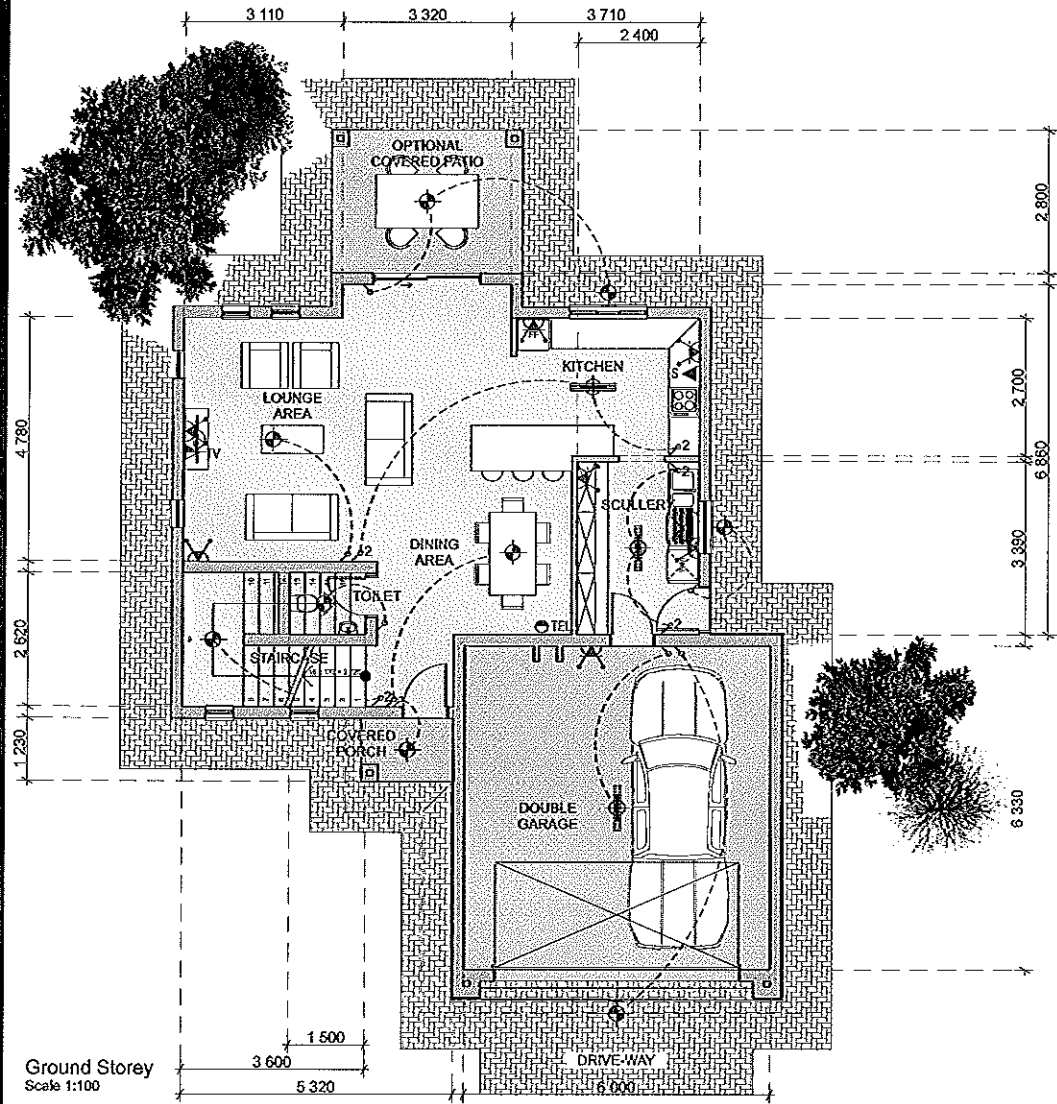
KLERCK ARCHITECTS (PTY) LTD
Alerti Office Park | Block B | Ground Floor
457 Witherite Road | Die Wilgers
Pretoria | South Africa | 0040
PO Box 2242 | Zwavelpoort | 0036

Telephone: +27 (0) 12 807 2170
VAT Reg No. 411 016 8830
Company Number: 2015/004170/07

UNIT TYPE D

House - 167.10m²
Optional Patio - 9.77m²
Optional Balcony - 21.26m²

PROTECTED BY THE COPYRIGHT ACT NO. 98 OF 1978
KLERCK ARCHITECTS/CK No 1997/030849/23



DOUBLE D&G BUILDING CONTRACTORS.
P.O. Box 356 | Broederstroom 10240

Telephone: +27 (0) 14 537 8932/3
Fax: +27 (0) 86 670 6264
Email: marlize@ddandg.co.za

CK No. 1996/039688/23 | Member: B.E. Gericke.
Registered Member Of: NHBRC



KLERCK ARCHITECTS (PTY) LTD
Aletti Office Park 1 Block B 1 Ground Floor
457 Witherize Road 1 Die Wilgers
Pretoria 1 South Africa 1 0040
PO Box 2242 | ZwartePoort 1 0036

Telephone: +27 (0) 12 807 2170
VAT Reg No. 411 016 8830
Company Number: 2015/304170/07

UNIT TYPE E
House - 195.06m²
Optional Patio - 10.53m²

PROTECTED BY THE COPYRIGHT ACT NO. 98 OF 1978
KLERCK ARCHITECTS Sec No 1997/050348/23