

THE AZURE  
CAMPS BAY

**Nestled between the  
mountains and the sea**







## THE AZURE

*A blend of luxury and  
quiet sophistication*

**Welcome to The Azure:** an exclusive residential development nestled between Lion's Head, the Twelve Apostles and Camps Bay beach.

Located in the village at the heart of Camps Bay, one of Cape Town's most desirable neighbourhoods, The Azure comprises four landmark residences designed to the highest standards, within a short walk to the beach.

Sophisticated and relaxed, contemporary yet timeless, each residence accentuates the beauty of its natural surroundings. With Lion's Head rising to the north, The Azure is backed by the majestic Twelve Apostles mountains and looks towards the Atlantic Ocean – the perfect setting at the tip of Africa.





**The perfect setting  
for welcoming  
friends and family**







**The master bedroom  
embodies the sense  
of luxury and privacy  
that defines The Azure**





Designed for open-plan  
living and easy entertaining











**Sophisticated living with  
the space and freedom  
to breathe the ocean air**







**Natural stone and timber  
creates a warm and  
tranquil atmosphere**





**A central courtyard  
bringing nature and  
natural light indoors**

## The Azure: Key Features

### General

-  4 prestigious residences
-  Prime location in Camps Bay village
-  Sea and mountain views
-  Super-basement with secure underground parking
-  Lock-up-and-go convenience
-  **150** metres from beachfront and restaurants
-  Storeroom for each residence
-  Staff locker room



### Key Features

-  Private pool for each residence
-  Automated pool covers for each residence
-  Fully integrated SMEG appliances that include side by side fridge and freezer, 900 gas hob and electric oven, dishwasher, microwave, washing machine and dryer
-  Air-conditioning throughout
-  Underfloor heating & heated towel rails to bathrooms
-  **4** en-suite bedrooms with luxurious Belgotex carpets
-  Lounge, dining room and family room
-  Closed combustion wood burning fireplace
-  Gas braai / barbeque on the terrace
-  Bespoke Italian designer chefs' kitchens with separate scullery
-  Hardwood flooring





### Green Features

-  Independent borehole water supply
-  Water purification plant
-  Hydra Therm Integrated Heat Pump hot water supply
-  Solar heated swimming pools with automated pool covers
-  Water efficient sanitary fittings
-  Low-voltage LED lighting
-  Planted courtyards
-  Subsurface drip irrigation to all manicured gardens
-  Pool backwash tank to recycle pool water

### Security & Electronic Features:

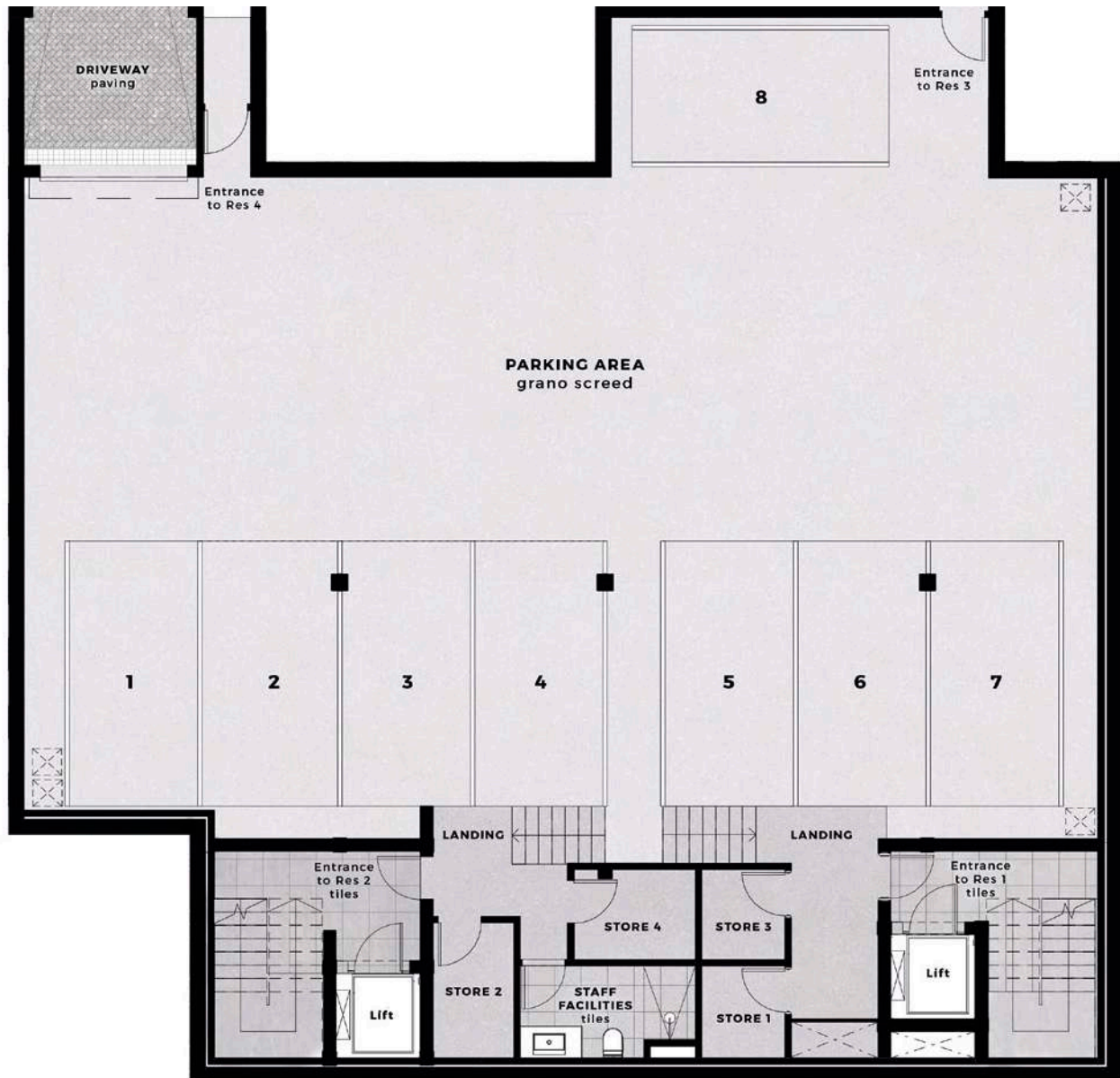
-  CCTV cameras & monitoring
-  Integrated alarm system
-  Outdoor motion sensors
-  Electric fencing
-  Fibre internet connectivity
-  Automated access control into basement and residence entrances

### Independent Battery Back-Up Power:

-  5kVA Power Up included
-  10.2 kWh Lithium battery
-  Connected to a sub-DB that powers the selected electrical outlets
-  Additional batteries can be added to enhance the system

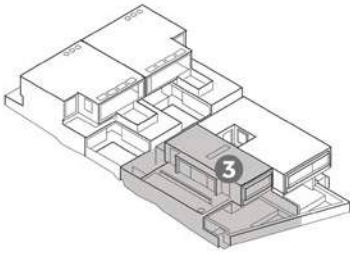


## Basement

**Each residence is allocated:**

- 2 secure parking bays
- Private storeroom

## Residence 3



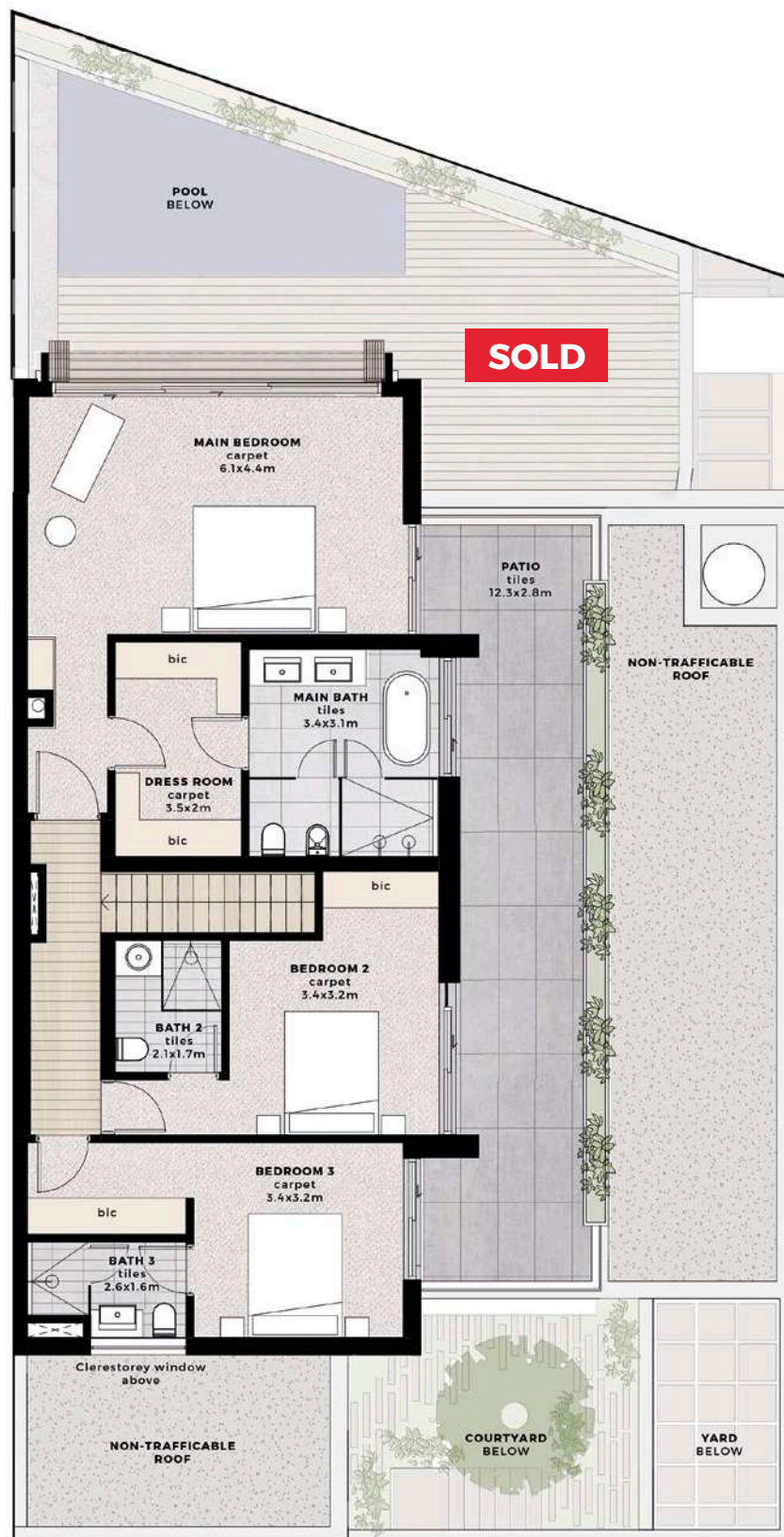
- Large lounge, dining room and family room
- 4 en-suite bedrooms
- Integrated kitchen and separate scullery
- Shaded terrace with pool
- Secure storeroom
- 2 basement parking bays

Internal:	260m <sup>2</sup>
Terrace:	131m <sup>2</sup>
<b>SUB-TOTAL:</b>	<b>391m<sup>2</sup></b>
Courtyard:	29m <sup>2</sup>
<b>TOTAL:</b>	<b>420m<sup>2</sup></b>



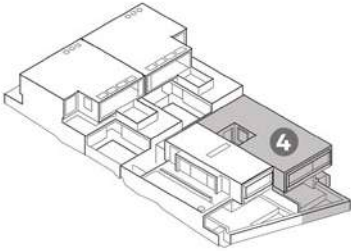
**THE DRIVE**  
Ground Floor





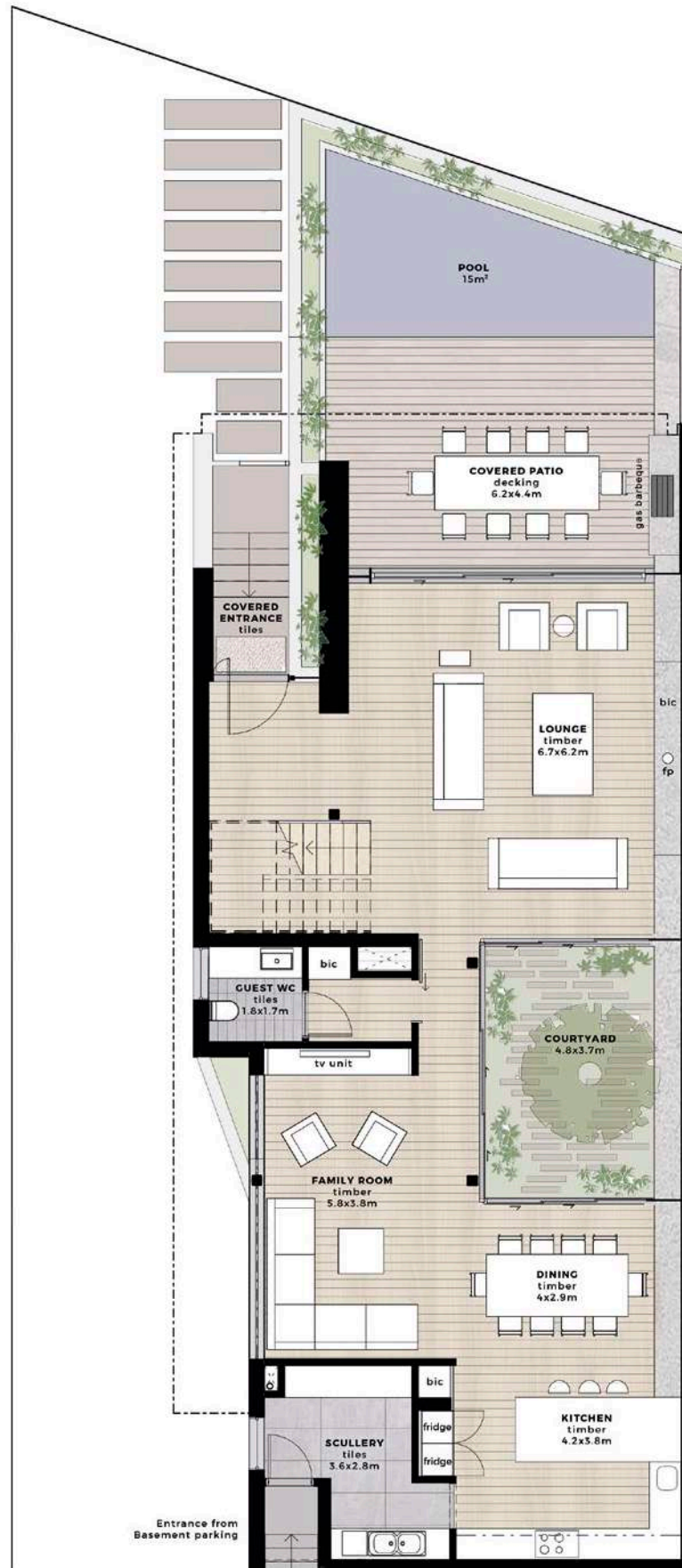
**THE DRIVE**  
First Floor

## Residence 4



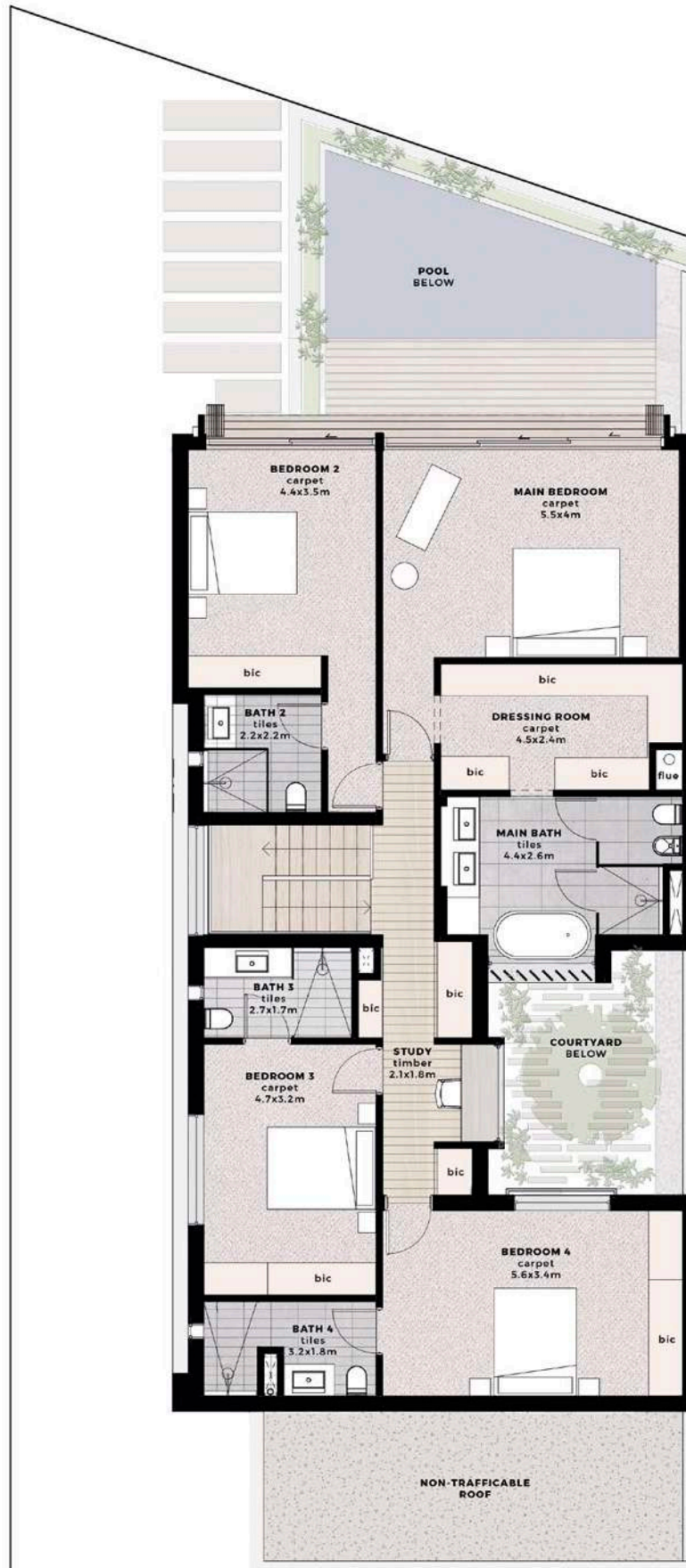
- Large lounge, dining room and family room
- 4 en-suite bedrooms
- Integrated kitchen and separate scullery
- Internal courtyard
- Shaded terrace with pool
- Secure storeroom
- 2 basement parking bays

Internal:	282m <sup>2</sup>
Terrace:	64m <sup>2</sup>
<b>SUB-TOTAL:</b>	<b>346m<sup>2</sup></b>
Courtyard:	19m <sup>2</sup>
<b>TOTAL:</b>	<b>365m<sup>2</sup></b>



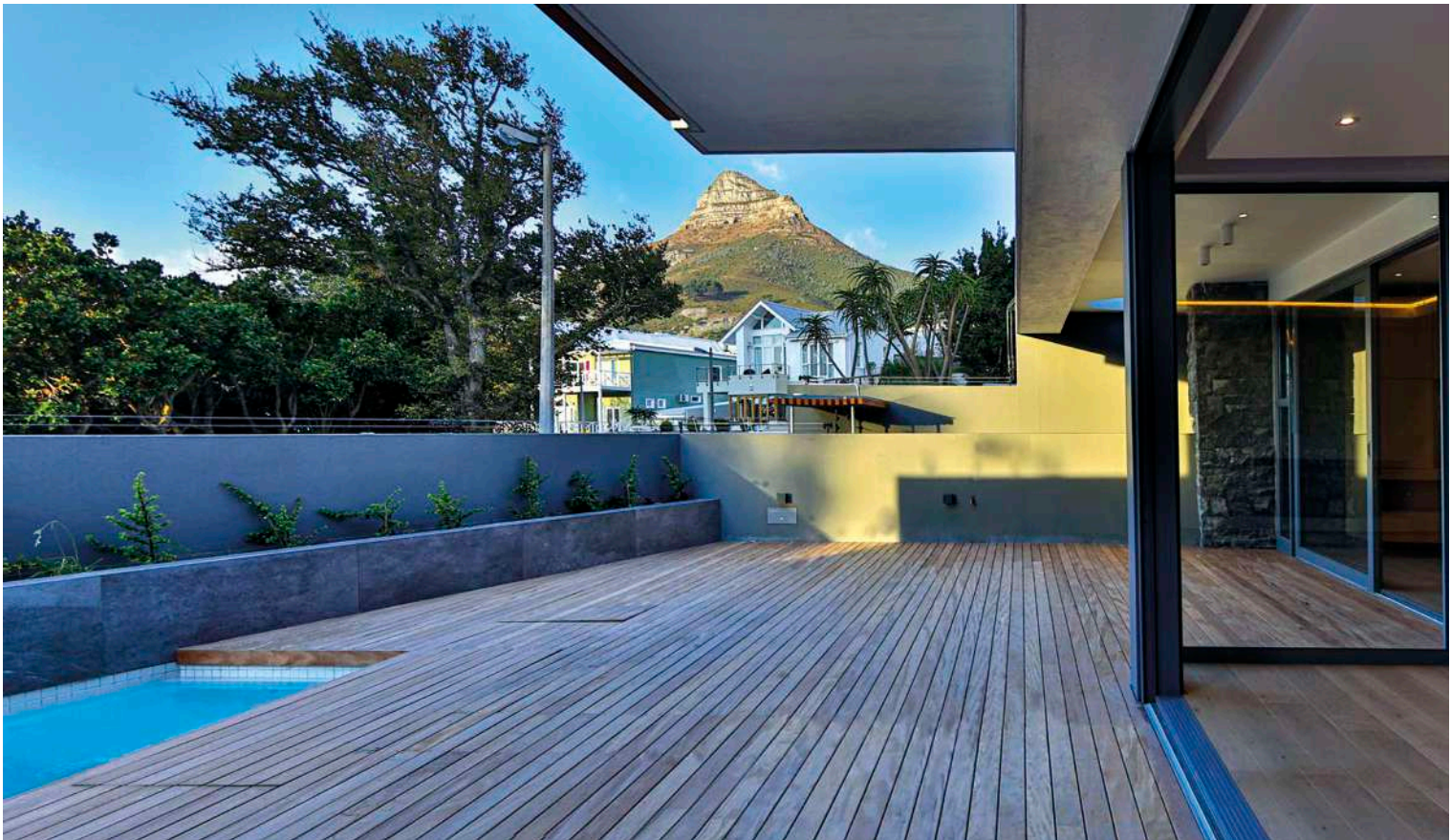
**THE DRIVE**  
Ground Floor















**Bespoke Italian kitchen with fully integrated SMEG appliances and separate scullery**







**Spacious open-plan living area  
with wood burning fireplace**







---

**The Azure  
13 The Drive  
Camps Bay**

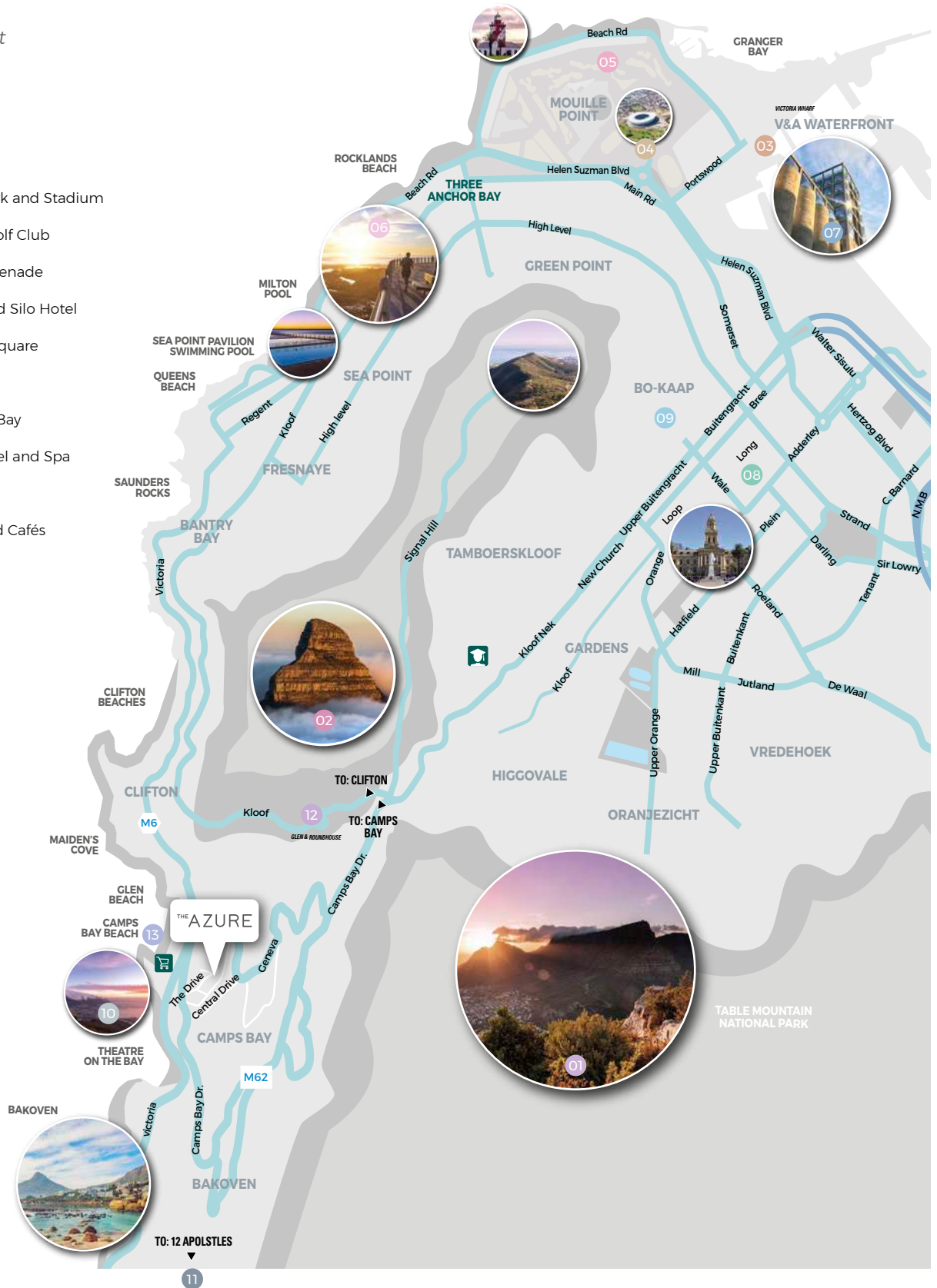
*A luxurious blend of  
privacy and beauty*





Places of interest

- 01 Table Mountain
- 02 Lion's Head
- 03 V&A Waterfront
- 04 Green Point Park and Stadium
- 05 Metropolitan Golf Club
- 06 Sea Point Promenade
- 07 Zeitz Mocaa and Silo Hotel
- 08 Green Market Square
- 09 Bo Kaap
- 10 Theatre on the Bay
- 11 12 Apostles Hotel and Spa
- 12 Round House
- 13 Restaurants and Cafés



Disclaimer

Please note that images, renders, perspectives, plans and finishes shown are impressions only and remain subject to change at the developer's discretion. The developer cannot be held liable for any changes made. This material has been prepared for informational and marketing purposes only.

**www.TheAzure.capetown**  
**sales@horizoncapital.co.za**  
**+27 21 425 8586**

Visit our showroom at  
Suite 302, Soho-on-Strand,  
128 Strand Street, Cape Town

**HORIZON** | RESIDENTIAL  
CAPITAL