



DOGON | GROUP

PROPERTIES

CHAS BOOTH
FINISHING SCHEDULE



CHAS BOOTH

HEAD OFFICE 021 433 2580

dogongroup.com

A visionary company with decades of experience



DOGON | GROUP

PROPERTIES

COMPANY PARTICULARS

Established in 2002 and founded by Denise Dogon, Dogon Group Properties has proven to be a true real estate success story. The Dogon name has become synonymous with the proficient and effective marketing and selling of premium grade properties in Cape Town and particularly the sought-after Atlantic Seaboard. Dogon Group currently have offices in high profile positions in Sea Point and Southern Suburbs.

Dogon Group Properties prides itself on its unique and focused approach to marketing and sales, providing a comprehensive and tailored solution to ensure that sales occur at the optimum price within a compressed space of time. The company utilizes an evolved and distinctive sales force of highly adept and skilled sales agents who are selected for their extensive experience, professionalism and successful track records.

Headed by Managing Director Alexa Horne, Dogon Group has a dedicated in-house marketing department ensuring that focused and specialized marketing strategies are implemented. The powerful proprietary Dogon Group database combined with its eye-catching and prominent advertising, both in print and digital media, together with our visible network of sales offices support our strong performance on the Western Cape's Atlantic Seaboard, Southern Suburbs, Western Seaboard and surrounding areas.

DOGON GROUP PROPERTIES (PTY) LTD
REGISTRATION NO: 2002/020365/07
FIDELITY FUND CERTIFICATE NO: F110941
ALEXA HORNE (MANAGING DIRECTOR)

P O BOX 605 SEA POINT 8060
THE KINGS, 101 REGENT ROAD
SEA POINT, SOUTH AFRICA
TEL +27 21 433 2580
FAX +27 21 433 2781

SALES AGENT



PAUL UPTON
071 610 8088
paul@dogongroup.com
FFC: 0525859

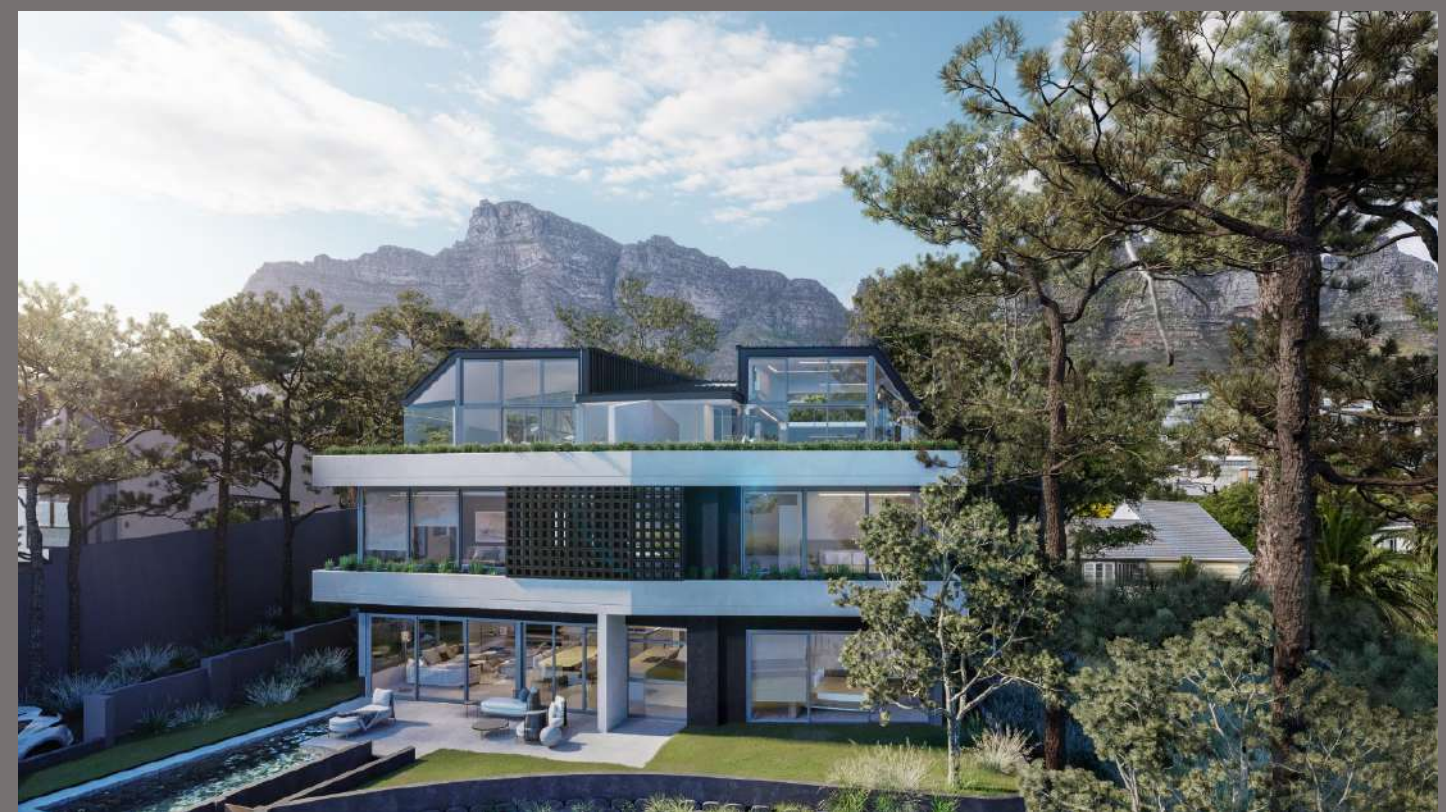
HEAD OFFICE **021 433 2580**

dogongroup.com

A visionary company with decades of experience

6 CHAS BOOTH

FINISHING SCHEDULE



1. EXTERNAL FINISHES

1.1 GATE

AREA: DRIVEWAY

PRODUCT: MILD STEEL / ALUMINIUM

COLOUR: CHARCOAL

DESIGN: AS PER ARCHITECT'S DETAIL

1.2 BRICK PAVING

AREA: DRIVEWAY AND PARKING AREAS

PRODUCT: CHARCOAL PAVER BRICKS

NOTE: AS PER ARCHITECT'S DETAIL



1.3 GARAGE DOORS

AREA: BLOCK A

PRODUCT: ALUMINIUM

SIZE: DOUBLE

COLOUR: CHARCOAL



1. EXTERNAL FINISHES

1.4 ALUMINIUM SLIDING DOORS AND WINDOWS

AREA: BLOCK A AND B

PRODUCT: SINGLE GLAZING

COLOUR: LIGHT GREY OR SIMILAR

NOTE: DOUBLE GLAZING OPTIONAL



1.5 PLASTER AND PAINT

AREA: BLOCK A AND B

PRODUCT: TEXTURED PAINT OR SIMILAR

COLOUR: AS PER ARCHITECT'S SPECIFICATIONS

1.6 PLANTER BOXERS

PRODUCT: CONCRETE FINISH OR SIMILAR

COLOUR: AS PER ARCHITECT'S SPECIFICATION

NOTE: TO BE WATERPROOFED IN ACCORDANCE WITH SANS REQUIREMENTS

1.7 BALUSTRADES

AREA: WHERE REQUIRED

PRODUCT: FRAMELESS SAFETY GLASS

2. FLOOR FINISHES

2.1 INTERNAL FLOOR TILES

AREA: BEDROOMS, BATHROOMS, LIVING

PRODUCT: REVERSO GIA GREY PORCELAIN TILE OR SIMILAR

SIZE: 1200 x 600 MM



2.2 EXTERNAL FLOOR TILES

AREA: PATIOS AND COMMON AREAS

PRODUCT: REVERSO GIA GREY PORCELAIN TILE OR SIMILAR

SIZE: 600 X 600 MM

NOTE: TILED TO FALL

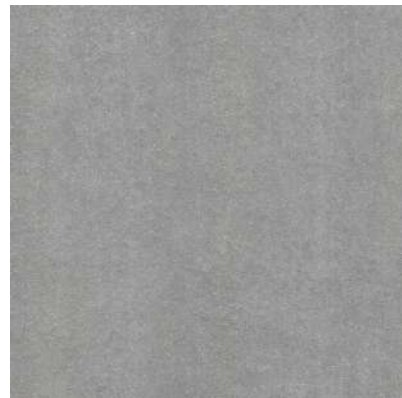


2.3 GARAGE FLOORS

AREA: BLOCK A GARAGES

PRODUCT: GREY PROCELAIN TILE

SIZE: 60 x 60 cm



2. FLOOR FINISHES

2.4 SKIRTING

AREA: ALL INTERNAL AREAS EXCLUDING BATHROOMS

PRODUCT: MERANTI PAINTED TO MATCH WALL COLOURS

DESIGN: AS PER ARCHITECT'S DETAIL



2.5 SKIRTING

AREA: BATHROOMS AND PATIOS

PRODUCT: REVERSO GIA GREY PORCELAIN TILE OR SIMILAR

SIZE: AS PER ARCHITECT'S DETAIL

NOTE: TO MATCH FLOOR TILES



3. INTERNAL WALL FINISHES

3.1 BATHROOM WALL TILES

AREA: AS PER ARCHITECTS DETAIL

PRODUCT: REVERSO GIA GREY PORCELAIN TILE OR SIMILAR

SIZE: 1200 X 600 MM

NOTE:



3.2 PLASTER AND PAINT

PLASTER: 2 COATS STEEL TROWLED FINISHED PLASTER

PAINT: 1 COAT PRIMER AND 2 FINISHING COATS TO MANUFACTURER'S SPECIFICATIONS

COLOUR: NEUTRAL / AS PER ARCHITECT'S SPECIFICATIONS

3.3 FEATURE WALLS (PAINT)

AREA: LIVING AREAS AND BLOCK A LOBBY

PRODUCT: MARMORAN OR SIMILAR

COLOUR: GREY SUADE



4. INTERIOR FIT OUT

4.1 INTERIOR CEILINGS

PRODUCT: FLUSH PLASTER SOFFITS WITH DROPPED BULKHEADS AS PER ARCHITECT'S DETAILS

COLOUR: WHITE

4.2 INTERNAL DOORS

PRODUCT: FLUSH PANEL SEMI-SOLID TIMBER

FINISH: PAINTED FINISH

COLOUR: TO ARCHITECT'S SPECIFICATIONS

NOTE: DOOR FRAMES TO ARCHITECT'S DETAILS

4.3 INTERNAL DOOR IRONMONGERY

AREA: TIMBER DOORS

PRODUCT: CORNER LEVER HANDLE OR SIMILAR

FINISH: POLISHED CHROME



4.4 INTERIOR JOINERY

AREA: BEDROOM CUPBOARDS

PRODUCT: SUPAMATT PG BISON OR SIMILAR

SIZE: CUSTOM

FINISH: FOLKSTONE GREY OR SIMILAR

FITTINGS: GRASS, BLUM OR SIMILAR SOFT CLOSING AND RECESSED FINGER GRIP DETAILS



4. INTERIOR FIT OUT

4.5 INTERIOR JOINERY

AREA: KITCHENS AND BATHROOM VANITIES

PRODUCT: SENO KAINDL OR SIMILAR

SIZE: AS PER DESIGN

COLOUR: CONCRETE ART WHITE OR SIMILAR



4.6 COUNTERTOPS AND SPLASHBACKS

AREA: KITCHENS AND BATHROOMS

PRODUCT: CAESARSTONE OR SIMILAR

COLOUR: CLOUDBURST CONCRETE OR SIMILAR



4.7 COUNTERTOPS

AREA: KITCHENS BREAKFAST NOOK WHERE APPLICABLE

PRODUCT: OAK COUNTERTOP OR SIMILAR

COLOUR: AS INDICATED OR SIMILAR



4.8 FEATURE LIGHT

AREA: KITCHEN NOOK

PRODUCT: TO BE DECIDED BY BUYER

NOTE: TO FIT WITHIN ALLOWANCE



4. INTERIOR FIT OUT

4.9 ELECTRICAL PLUGS AND SWITCHES

PRODUCT: LEGRAND YSALIS RANGE OR SIMILAR

COLOUR: WHITE



4.10 HEATING AND COOLING

AREA: LIVING AREA

PRODUCT: SAMSUNG CEILING CASSETTE UNITS OR SIMILAR

NOTE: BTU DEPENDANT ON AREA REQUIREMENT

NOTE: ADDITIONAL ROOMS OPTIONAL



4.11 HEATING AND COOLING

AREA: MAIN BEDROOM

PRODUCT: SAMSUNG SLIM 1-WAY CASSETTE OR SIMILAR

NOTE: 12000 BTU

NOTE: ADDITIONAL ROOMS OPTIONAL



5. KITCHEN APPLIANCES

5.1 OVEN

AREA: KITCHEN

PRODUCT: SIEMENS 90CM BUILT-IN ELECTRIC OVEN IQ 300 OR SIMILAR

SIZE: 896mm x 594mm x 570mm

FINISH: STAINLESS STEEL WITH BLACK FRONT



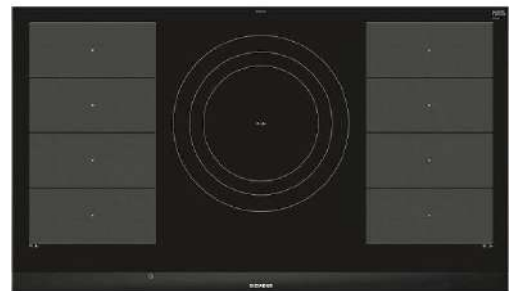
5.2 HOB

AREA: KITCHEN

PRODUCT: SIEMENS 90CM INDUCTION HOB IOR SIMILAR

SIZE: 912mm x 520mm

FINISH: BLACK BASE WITH CAST IRON PAN SUPPORT



5.3 MICROWAVE

AREA: KITCHEN

PRODUCT: SIEMENS COMPACT OVEN WITH MICROWAVE OR SIMILAR

SIZE: 568mm x 455mm x 455mm

FINISH: STAINLESS STEEL WITH BLACK FRONT



5. KITCHEN APPLIANCES

5.4 FRIDGE

AREA: KITCHEN

PRODUCT: SIEMENS iQ500 BUILT-IN FULL FRIDGE OR SIMILAR

SIZE: 1775mm x 560mm



5.5 FREEZER

AREA: KITCHEN

PRODUCT: SIEMENS iQ500 BUILT-IN FULL FREEZER OR SIMILAR

SIZE: 1772mm x 558mm



6. SANWARE

6.1 BASIN

PRODUCT: DURAVIT STARCK 3 UNDERSLUNG BASIN OR SIMILAR

SIZE: 490MM



6.2 BASIN MIXER

PRODUCT: HANS GROHE TALIS S 100 MIXER OR SIMILAR

SIZE: 116MM X 46MM X 244MM



6.3 BATH

PRODUCT: MARTINIQUE FREESTANDING BATH OR SIMILAR

SIZE: 1680MM X 750MM X 580MM



6.4 BATH MIXER

PRODUCT: HANS GROHE TALIS S BATH/SHOWER MIXER OR SIMILAR

SIZE: 120MM X 150MM X 150MM



6.5 BATH SPOUT

PRODUCT: GIO SQUARE FLOORSTANDING BATH SPOUT

SIZE: 900MM X 30MM



6. SANWARE

6.6 SHOWER HEAD

PRODUCT: HANS GROHE CLUB MASTER 3 JET OVERHEAD SHOWER



6.7 SHOWER ARM

PRODUCT: HANS GROHE THICK SHOWER ARM

SIZE: 100MM



6.8 SHOWER MIXER

PRODUCT: HANS GROHE TALIS S BATH/SHOWER MIXER OR SIMILAR

SIZE: 120MM X 150MM X 150MM



6.9 ACTUATOR PLATE

PRODUCT: GEBERIT ALPHA15 DUAL FLUSH OR SIMILAR

SIZE: 213MM X 16MM X 142MM



6.10 TOILET

PRODUCT: JIKA MIO WALL HUNG TOILET OR SIMILAR

SIZE: 530MM X 360MM



6. SANWARE

6.11 PREP BOWL

PRODUCT: FRANKE SELENE UNDERSLUNG SINK OR SIMILAR

SIZE: 450MM X 450MM X 230MM



6.12 PREP BOWL MIXER

PRODUCT: HANS GROHE DÉCOR MIXER OR SIMILAR

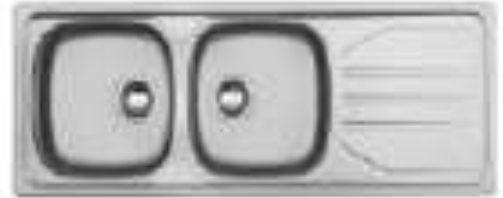
SIZE: 237MM X 104MM X 338MM



6.13 SINK (DOUBLE)

PRODUCT: FRANKE NOUVEAU DROP IN DOUBLE SINK OR SIMILAR

SIZE: 1167MM X 475MM X 142MM



6.14 SINK MIXER

PRODUCT: HANS GROHE DÉCOR MIXER OR SIMILAR

SIZE: 237MM X 104MM X 338MM



7. OTHER

7.1 SECURITY

INTEGRATED ALARM

CCTV CAMERA SYSTEM WITH SMART PHONE ACCESS

ACCESS CONTROL AT ALL MAIN ENTRANCES

7.2 INVERTOR

GRID TIED HYBRID INVERTOR WITH LITHIUM BATTERY

NOTE: OPTION TO UPGRADE TO SOLAR

8. OPTIONAL EXTRAS

8.1 SWIMMING POOL

AREA: PATIO

PRODUCT: GUNITE STRUCTURE WITH MOSAIC TRIM

8.2 ALUMINIUM SLIDING DOORS AND WINDOWS

AREA: BLOCK A AND B

PRODUCT: OPTION TO UPGRADE GLAZING SPECIFICATION

ALUMINIUM COLOUR: AS PER THE SCHEME

NOTE: TO BE COSTED ON REQUEST

8.3 HEATING AND COOLING (OPTIONAL)

AREA: OTHER BEDROOMS

PRODUCT: SAMSUNG CASSETTE UNITS OR SIMILAR

NOTE: BTU DEPENDANT ON AREA REQUIREMENT

8.4 HEATING

AREA: ALL AREAS

PRODUCT: ELECTRIC UNDER FLOOR HEATING

NOTE: TO BE SELECTED BY BUYER AND COSTED ACCORDINGLY

8.4 BACK-UP WATER SUPPLY

NOTE: SYSTEM TO BE SELECTED BY BUYER AND COSTED ACCORDINGLY

8.5 INVERTOR

NOTE: OPTION TO UPGRADE TO SOLAR