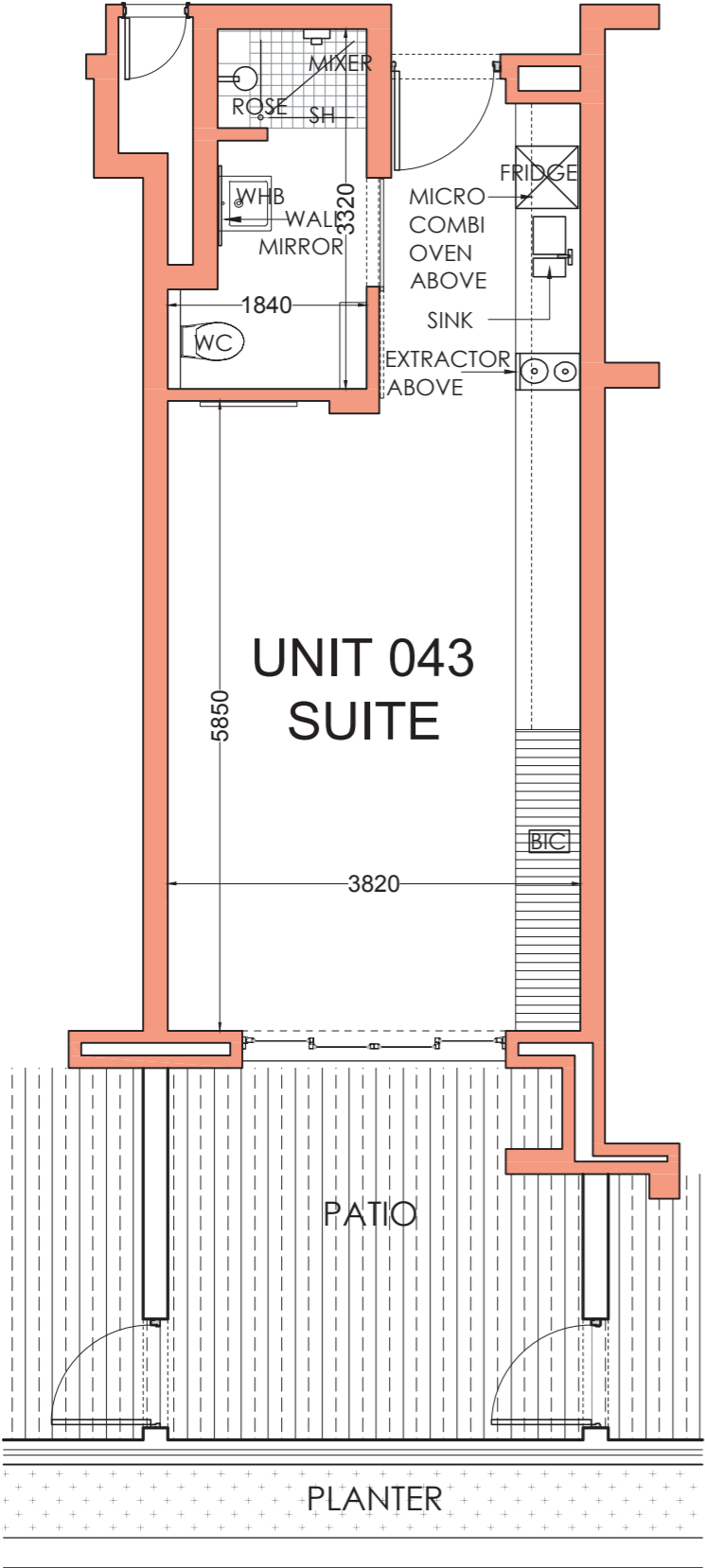
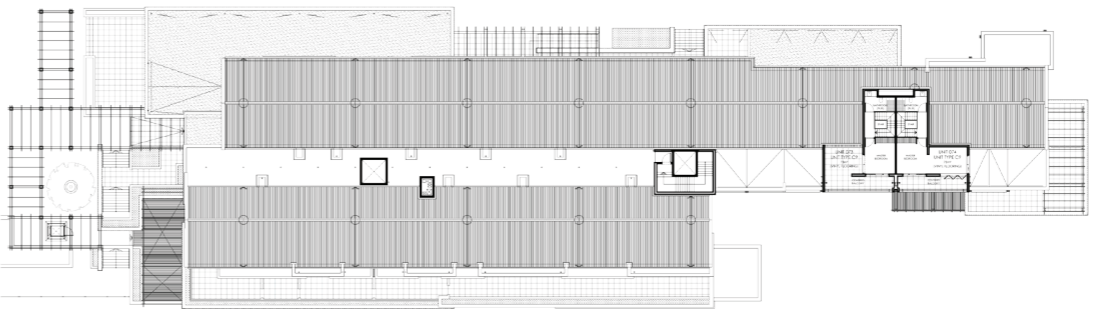


PRICE R1,950,000 | SALES PRICE (Incl. VAT) - No Transfer Duty

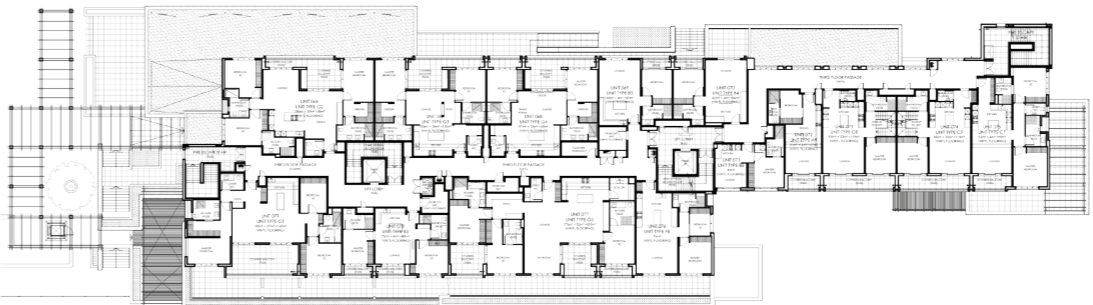
51m² Studio x1 x1 Yes



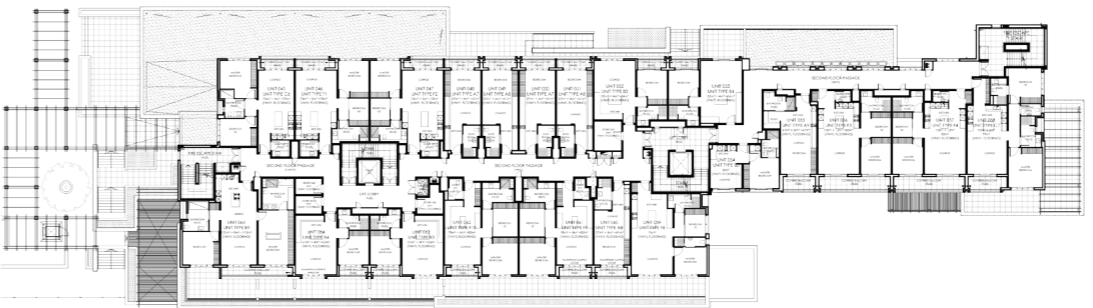
UNIT LAYOUT PLAN



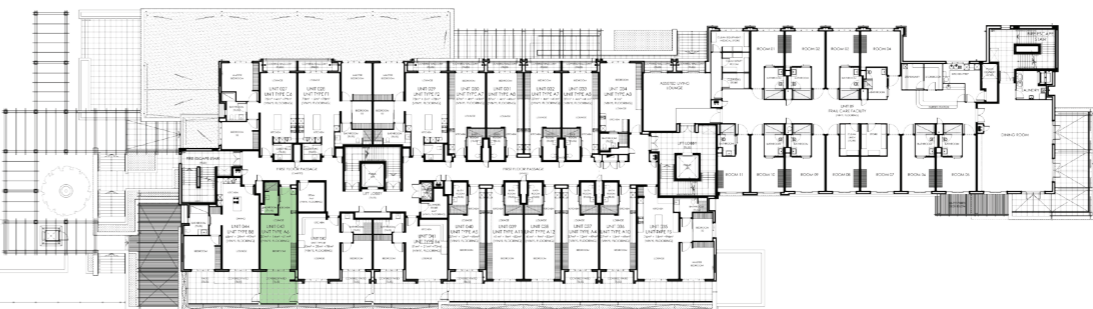
FOURTH FLOOR PLAN



THIRD FLOOR PLAN



SECOND FLOOR PLAN



FIRST FLOOR PLAN

AVAILABLE
SOLD

HARBOUR BAY
VILLAGE

UNIT SIZE: 37m²
PATIO SIZE: 14m²
BEDROOM: STUDIO
BATHROOM: 1
PARKING: 1

TOTAL SECTION
AREA: 51m²

A6
UNIT 43

THE ADMIRAL