

PRICE R2,825,000 | SALES PRICE (Incl. VAT) - No Transfer Duty



72m²



x1



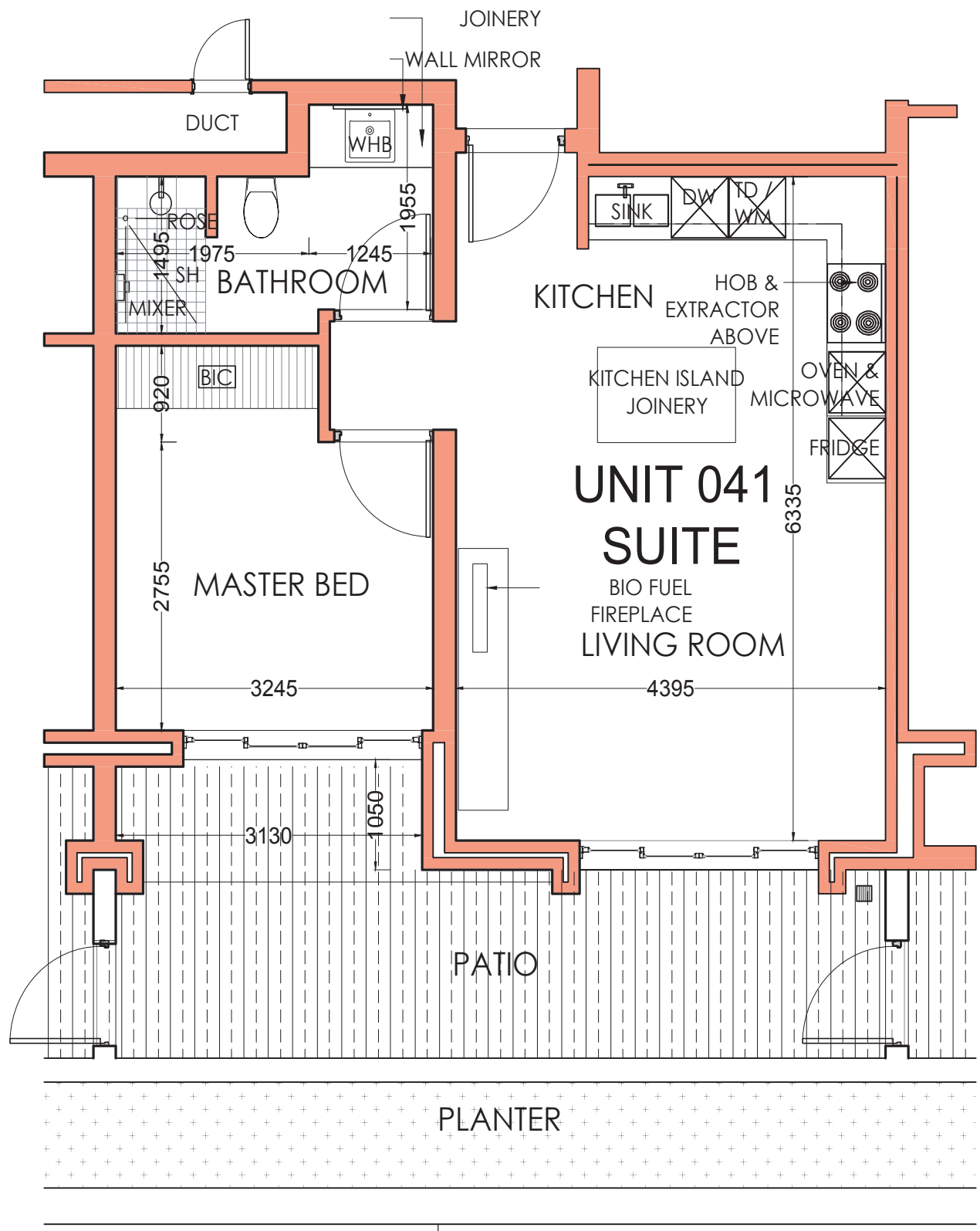
x1



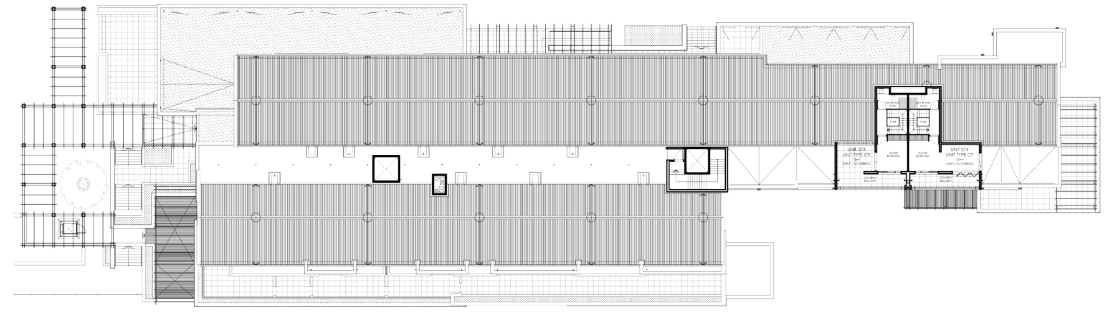
x1



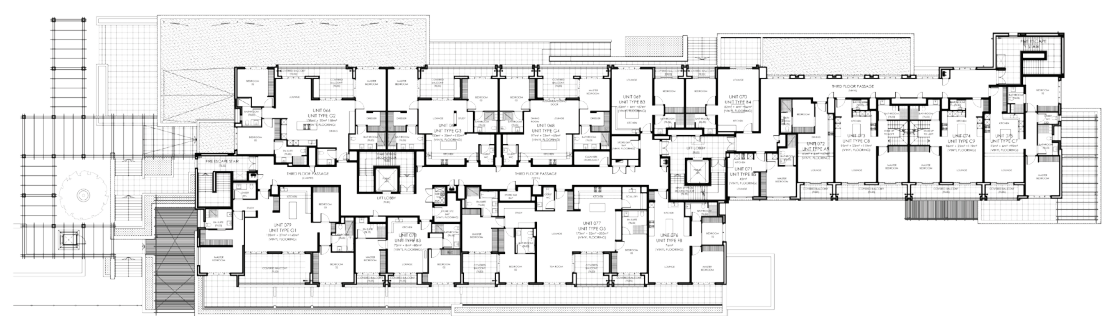
Yes



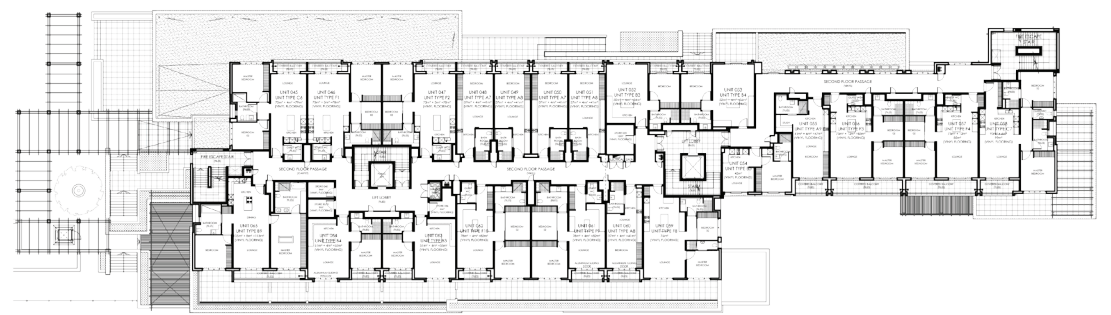
UNIT LAYOUT PLAN



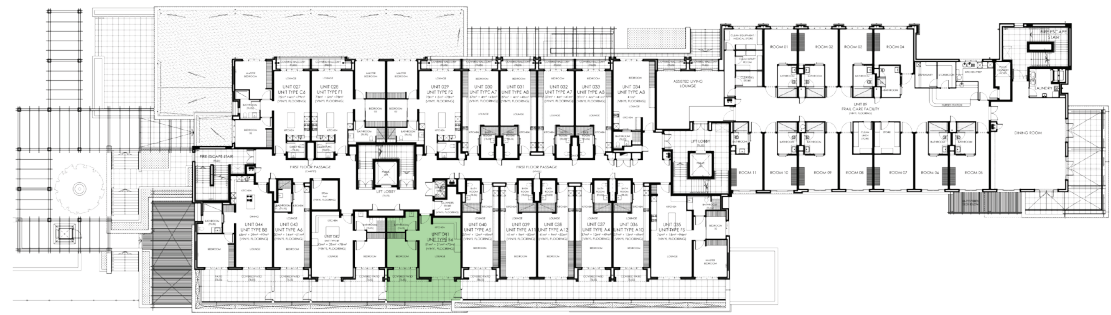
FOURTH FLOOR PLAN



THIRD FLOOR PLAN



SECOND FLOOR PLAN



FIRST FLOOR PLAN



AVAILABLE



SOLD



HARBOUR BAY VILLAGE

UNIT SIZE: 51m²
PATIO SIZE: 21m²
BEDROOM: 1
BATHROOM: 1
PARKING: 1

TOTAL SECTION AREA: 72m²

B6
UNIT 41

THE ADMIRAL