



DOGON | GROUP

PROPERTIES

26 DE LONGUEVILLE

FINISHING SCHEDULE



The depictions herein are for illustrative purposes only and are subject to change without notice.

HEAD OFFICE **021 433 2580**

dogongroup.com

A visionary company with decades of experience



DOGON | GROUP

P R O P E R T I E S

COMPANY PARTICULARS

Established in 2002 and founded by Denise Dogon, Dogon Group Properties has proven to be a true real estate success story. The Dogon name has become synonymous with the proficient and effective marketing and selling of premium grade properties in Cape Town and particularly the sought-after Atlantic Seaboard. Dogon Group currently have offices in high profile positions in Sea Point and Southern Suburbs.

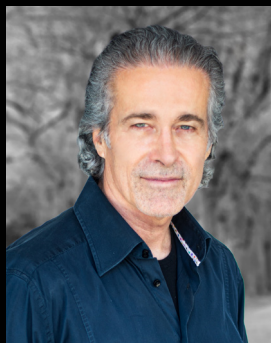
Dogon Group Properties prides itself on its unique and focused approach to marketing and sales, providing a comprehensive and tailored solution to ensure that sales occur at the optimum price within a compressed space of time. The company utilizes an evolved and distinctive sales force of highly adept and skilled sales agents who are selected for their extensive experience, professionalism and successful track records.

Headed by Managing Director Alexa Horne, Dogon Group has a dedicated in-house marketing department ensuring that focused and specialized marketing strategies are implemented. The powerful proprietary Dogon Group database combined with its eye-catching and prominent advertising, both in print and digital media, together with our visible network of sales offices support our strong performance on the Western Cape's Atlantic Seaboard, Southern Suburbs, Western Seaboard and surrounding areas.

DOGON GROUP PROPERTIES (PTY) LTD
REGISTRATION NO: 2002/020365/07
ALEXA HORNE (MANAGING DIRECTOR)

P O BOX 605 SEA POINT 8060
THE KINGS, 101 REGENT ROAD
SEA POINT, SOUTH AFRICA
TEL +27 21 433 2580
FAX +27 21 433 2781

SALES AGENT



PAUL UPTON
071 610 8088

HEAD OFFICE **021 433 2580**

dogongroup.com

A visionary company with decades of experience



DOGON | GROUP

PROPERTIES

FINISHING SCHEDULE

26 DE LONGUEVILLE, UPPER FRESNAYE, CAPE TOWN

Specification and Schedule of Finishes

This document to be read in conjunction with the architects marketing drawings

All items below are specified as minimum specification

The developer reserves the right to substitute any of the below items with equal or better quality specification

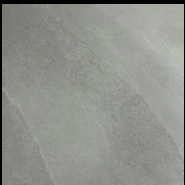
EXTERNAL FINISHES

FLOORS

Driveway Exposed aggregate concrete or cobbles

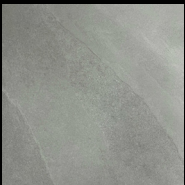
Balconies

1200 x 600 x 10mm Porcelain tile



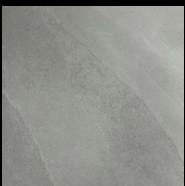
Passages

1200 x 600 x 10mm Porcelain tile



Entrance steps and landings

1200 x 600 x 10mm Porcelain tile



Landscaping

Granite pavers (stepping stones) & landscaping - to be confirmed in landscaping design proposal planting

WALLS

Lift shaft

Marmoran (Natureplast)

External walls, planters

1 mm Natureplast or similar - white

Boundary walls

1 mm Natureplast or similar - white

Featured walls

150mm Stone cladding zone

External walls of apartments

External plaster & paint (2nd Layer of external walls)

BALUSTRADES

Solid

Plaster & painted

Steel

GMS painted

The depictions herein are for illustrative purposes only and are subject to change without notice.

HEAD OFFICE 021 433 2580

dogongroup.com

A visionary company with decades of experience



DOGON | GROUP

PROPERTIES

FINISHING SCHEDULE

26 DE LONGUEVILLE, UPPER FRESNAYE, CAPE TOWN

CEILINGS

Terraces	Skimmed & painted external plasterboard
Fourth floor feature	Western Red Cedar (or similar) - slats to detail (Penthouse only)

ROOF

Roof build-up	Stone chip on 50mm Isoboard on Geotextile on One layer bitumen torch-on DPM on Screed to fall to fullbores on Flat concrete slab with crystalline waterproofing additive (Xypex) - Level 1 joint detail protocol Hulabond edging to concrete roof (to detail) - powder coated as per shopfronts
---------------	---

STAIRS

Landings, treads & risers	10mm Porcelain tile external finish 1200 x 600mm
---------------------------	--



Balustrades	GMS handrails & balustrades painted
-------------	-------------------------------------

POOL

Shell	Fibreglass lined concrete
Scumline	150mm Glass mosaic (Reviglass or similar)

SCREENS

Facade screens	Vertical hollow rectangular powder coated aluminium box sections
----------------	--

INTERNAL FINISHES

LG GARAGE / SERVICE AREAS

Floor	Power floated concrete
Walls	Bagged brickwork
Ceilings	Exposed concrete soffit

GROUND FLOOR ENTRANCE

Floor	10mm Porcelain tile external finish 1200 x 600mm
Walls - general	Plastered & painted
Walls - feature	Slatted timber cladding
Ceilings	Skimmed & painted plasterboard
External walls of apartments	External plaster & paint (2nd Layer of external walls)

The depictions herein are for illustrative purposes only and are subject to change without notice.

HEAD OFFICE 021 433 2580

dogongroup.com

A visionary company with decades of experience



DOGON | GROUP

P R O P E R T I E S

FINISHING SCHEDULE

26 DE LONGUEVILLE, UPPER FRESNAYE, CAPE TOWN

UNITS 1, 2 & 3

ENTRANCE HALL & PASSAGES

Front door	2.4m High solid timber door with vertical grooves & glazed sidelights as per schedule
Lift doors & architrave	Brushed stainless steel by specialist
Floor	Engineered wooden flooring in light Oak
Walls	Plaster & paint - Colour TBC
Ceilings	Skimmed & painted plasterboard ceiling
Skirtings	Painted 150mm timber profile
Feature	Slatted timber panelling to conceal fibre door
Internal doors	2.4m Height fire-related door clad with timber slats to match panelling
Jamb linings	To match doors
Skirtings	Painted 150mm timber profile

GUEST WC

Floor
10mm Porcelain tile 600 x 600mm



Walls
10mm Porcelain tile 600 x 600mm



Ceilings
Skimmed & painted plasterboard ceiling
Skirtings
10mm Cut porcelain tile 600 x 100mm
Mirror
Shaped wall hung mirror



The depictions herein are for illustrative purposes only and are subject to change without notice.

HEAD OFFICE 021 433 2580

dogongroup.com

A visionary company with decades of experience



DOGON | GROUP

PROPERTIES

FINISHING SCHEDULE

26 DE LONGUEVILLE, UPPER FRESNAYE, CAPE TOWN

LIVING & DINING ROOM

Floor

Engineered wooden flooring in light Oak



Walls

Ceilings

Skirtings

Joinery

Plaster & paint - Colour TBC

Skimmed & painted plasterboard ceiling

Painted 150mm timber profile

Custom shelving - Light Oak to match timber floors by Specialist

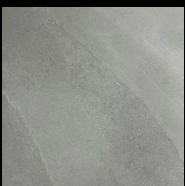
KITCHEN & SCULLERY



The depictions herein are for illustrative purposes only and are subject to change without notice.

Floor

10mm Porcelain tile internal finish 600 x 600mm



The depictions herein are for illustrative purposes only and are subject to change without notice.

HEAD OFFICE **021 433 2580**

dogongroup.com

A visionary company with decades of experience



DOGON | GROUP

P R O P E R T I E S

FINISHING SCHEDULE

26 DE LONGUEVILLE, UPPER FRESNAYE, CAPE TOWN

Walls

Plaster & paint - Colour TBC

Ceilings

Skimmed & painted moisture resistance plasterboard ceiling

Internal doors

2.4m Height semi-solid internal doors as per reference image & schedule

Jamb linings

To match doors

KITCHEN CUPBOARDS

Countertops

Ceasarstone or similar



Splashback

To match counterstops

Carcasses

Imported Italian cupboards



Doors & drawers

Semi-gloss duco sprayed - white (TBC)

Ironmongery

Grass / Blum or similar soft closing

Handles

Recessed finger grip details

Appliances - Siemens or similar



Oven

iQ300

Built-in oven

900 x 480 mm

Hob extractor provided

iQ700

Induction hob

900mm

Black

** Assirelli to advise / confirm

The depictions herein are for illustrative purposes only and are subject to change without notice.

HEAD OFFICE 021 433 2580

dogongroup.com

A visionary company with decades of experience



DOGON | GROUP

PROPERTIES

FINISHING SCHEDULE

26 DE LONGUEVILLE, UPPER FRESNAYE, CAPE TOWN

BEDROOMS



The depictions herein are for illustrative purposes only and are subject to change without notice.

Floor
Timber engineered flooring



Walls	Plaster & paint - Colour TBC
Ceilings	Skimmed & painted plasterboard ceiling
Internal doors	2.4m High semi-solid internal doors as per reference image & schedule
Jamb linings	To match doors

BUILT-IN CUPBOARDS

Carcasses	Imported Italian cupboards
Doors & drawers	Matt duco sprayed - white (TBC)
Ironmongery	Grass / Blum or similar soft closing
Handles	Recessed finger grip details
Jamb linings	To match doors

** Assirelli to advise / confirm

The depictions herein are for illustrative purposes only and are subject to change without notice.

HEAD OFFICE 021 433 2580

dogongroup.com

A visionary company with decades of experience



DOGON | GROUP

PROPERTIES

FINISHING SCHEDULE

26 DE LONGUEVILLE, UPPER FRESNAYE, CAPE TOWN

EN-SUITE BATHROOMS



The depictions herein are for illustrative purposes only and are subject to change without notice.

Floor
10mm Porcelain tile 600 x 600mm



Shower floor
10mm Porcelain tile 600 x 100mm



Walls
Feature wall
Ceilings
Doors & screens

Full height 10mm porcelain tile internal finish
Full height 10mm porcelain tile internal finish 600 x 100mm
Skimmed & painted moisture resistant plasterboard ceiling
Powder coated glazed aluminium sliding doors

The depictions herein are for illustrative purposes only and are subject to change without notice.

HEAD OFFICE **021 433 2580**

dogongroup.com

A visionary company with decades of experience



DOGON | GROUP

PROPERTIES

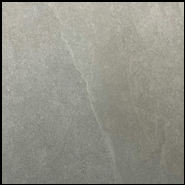
FINISHING SCHEDULE

26 DE LONGUEVILLE, UPPER FRESNAYE, CAPE TOWN

SANITARYWARE & CHROMEWARE

Floor

10mm Porcelain tile internal finish 600 x 600mm



Walls

Ceilings

Internal doors

Jamb linings

Plaster & paint - Colour TBC

Skimmed & painted moisture resistance plasterboard ceiling

2.4m Height semi-solid internal doors as per reference image & schedule

To match doors

VANITIES & MEDICINE CUPBOARDS

Carcasses

Doors & drawers

Ironmongery

Handles

Jamb linings

Imported Italian cupboards

Matt duco sprayed - white (TBC)

Grass / Blum or similar soft closing

Recessed finger grip details

To match doors

*** Mirror cabinets above vanities to be allowed for (length to match vanity, with LED strip lights to top & bottom*

*** Assirelli to advise / confirm*

BATHROOMS

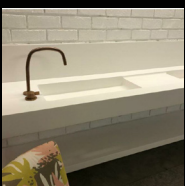
Toilets throughout project



Geberit cistern brushed stainless steel actuator



All vanity units



The depictions herein are for illustrative purposes only and are subject to change without notice.

HEAD OFFICE **021 433 2580**

dogongroup.com

A visionary company with decades of experience



DOGON | GROUP

P R O P E R T I E S

FINISHING SCHEDULE

26 DE LONGUEVILLE, UPPER FRESNAYE, CAPE TOWN

All basin mixers

3 Part Italian T cross range in brushed stainless steel finish wall mounted through splash back of basin installation



Shower units throughout all flats - brushed stainless steel rainrose and arm Gio 180 (Hot and cold taps)



Kessell shower trap with custom made chrome drid to detail (FDP)



APARTMENTS 1-3

Kitchen sink under mount stainless steel - Bongo brushed stainless steel finish T cross kitchen mixer



Sample of brushed stainless steel to be used on all sanitaryware throughout



The depictions herein are for illustrative purposes only and are subject to change without notice.

HEAD OFFICE **021 433 2580**

dogongroup.com

A visionary company with decades of experience