



PLOT AND
PLAN HOMES
TURN-KEY SOLUTIONS
MANAGED BY DEVELOPERS











Welcome TO OLIVEWOOD

Experience Luxury Living at Olivewood Private Estate and Golf Club – an oasis of tranquillity and beauty, within the Eastern Cape Coastal Forest. Olivewood offers various serene lifestyle choices, completely in harmony with nature. Our sought after luxury, turn-key homes offer you a range of housing options and opportunities, that meander seamlessly within the natural elements.

Our Turn-key homes offer a wide range of options suiting professionals and families alike. With offerings of three to five bedroom home types, and plots sized from 500sqm to over 2000sqm, options are endless. Can you picture yourself living in a home with a panoramic seascape, deep valley views or a scenic golf course vista?

Olivewood offers you a carefully planned development, crafted by approved professional consultants and contractors. Find your dream home in our prestigious estate, which offers premium facilities within a naturally inspired, safe and secure setting.

Distances from Olivewood Private Estate and Golf Club

	Crossways Village (<i>Groceries</i>)	12km		Beach	3km
	Crossways Village (<i>Pharmacy</i>)	12km		Life Hospital	26km
	East London Airport	44km		East London (<i>City</i>)	29km
	Hemingway's Mall	32km		Gonubie (<i>Suburb</i>)	21km

OLIVEWOOD SITE PLAN



Clubhouse Facilities



18-Hole Golf Course



On-site Eateries



Mountain Bike
& Hiking Trails



Fishing



Playground



Pet Friendly



24/7 Access
Controlled Security



1000ha Secure Estate



Electrified & Zoned
Perimeter Fence



Wellness Centre



Pool & Gym Facilities



Business Hub



HOME TYPE 1-A

Luxury family homes with space to breathe. Includes transfer fees, professional fees and approved building contractors.
Price is not inclusive of the developer stand.

3 2 2
  

Optional 4th bedroom available
Optional swimming pool

FROM

R 2 890 000

Floor area from 263sqm – 288sqm

Clubhouse Facilities
 18-Hole Golf Course
 On-site Eateries
 Mountain Bike &
 Hiking Trails
 Fishing

Playground
 Pet Friendly
 24/7 Access Controlled
 Security
 1000ha Secure Estate

Electrified & Zoned
 Perimeter Fence
 Wellness Centre
 Pool & Gym Facilities
 Business Hub





HOME TYPE 2-A

Luxury family homes with space to breathe. Includes transfer fees, professional fees and approved building contractors.
Price is not inclusive of the developer stand.

3



2.5



2



Optional 4th bedroom available
Optional swimming pool

FROM

R 3 430 000

Floor area of 237sqm

Clubhouse Facilities
 18-Hole Golf Course
 On-site Eateries
 Mountain Bike &
 Hiking Trails
 Fishing

Playground
 Pet Friendly
 24/7 Access Controlled
 Security
 1000ha Secure Estate

Electrified & Zoned
 Perimeter Fence
 Wellness Centre
 Pool & Gym Facilities
 Business Hub



GROUND FLOOR

AREA SCHEDULE	
House	173m ²
Covered Verandah	21m ²
Double Garage	43m ²
TOTAL	237m ²
Dry Yard	28m ²



FIRST FLOOR



HOME TYPE 3-A

Luxury family homes with space to breathe. Includes transfer fees, professional fees and approved building contractors.

Price is not inclusive of the developer stand.



FROM

R 3 220 000

Floor area of 246sqm

Clubhouse Facilities
18-Hole Golf Course
On-site Eateries
Mountain Bike & Hiking Trails
Fishing

Playground
Pet Friendly
24/7 Access Controlled Security
1000ha Secure Estate

Electrified & Zoned Perimeter Fence
Wellness Centre
Pool & Gym Facilities
Business Hub





HOME TYPE 4-A

Luxury family homes with space to breathe. Includes transfer fees, professional fees and approved building contractors.
Price is not inclusive of the developer stand.



*Optional additional bedroom
and bathroom available
Optional swimming pool*

FROM

R 3 790 000

Floor area from 310sqm – 334sqm

Clubhouse Facilities
18-Hole Golf Course
On-site Eateries
Mountain Bike &
Hiking Trails
Fishing

Playground
Pet Friendly
24/7 Access Controlled
Security
1000ha Secure Estate

Electrified & Zoned
Perimeter Fence
Wellness Centre
Pool & Gym Facilities
Business Hub



GROUND FLOOR

AREA SCHEDULE	
House	249m ²
Covered Verandah	46m ²
Carport	39m ²
TOTAL	334m²
Dry Yard	31m ²



FIRST FLOOR



HOME TYPE 5-A

Luxury family homes with space to breathe. Includes transfer fees, professional fees and approved building contractors.
Price is not inclusive of the developer stand.

5



2.5



2



Optional laundry and swimming pool

FROM

R 4 390 000

Floor area from 322sqm – 367sqm

Clubhouse Facilities
 18-Hole Golf Course
 On-site Eateries
 Mountain Bike &
 Hiking Trails
 Fishing

Playground
 Pet Friendly
 24/7 Access Controlled
 Security
 1000ha Secure Estate

Electrified & Zoned
 Perimeter Fence
 Wellness Centre
 Pool & Gym Facilities
 Business Hub

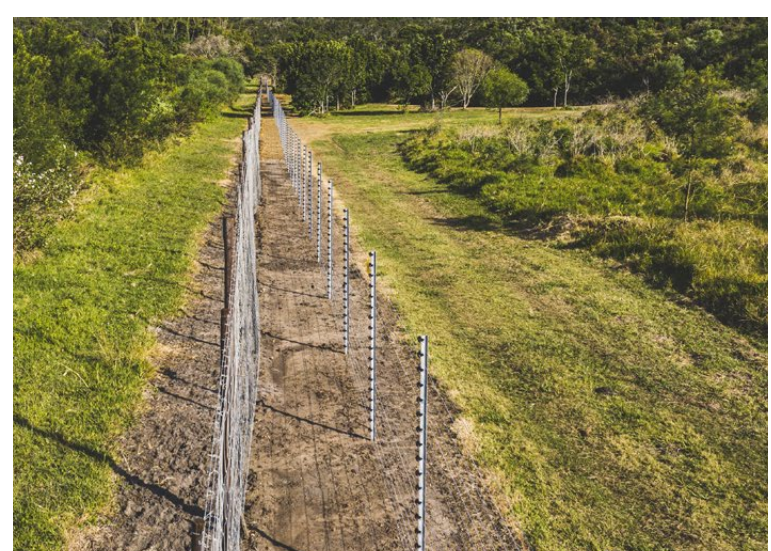


LOWER GROUND FLOOR



GROUND FLOOR

AREA SCHEDULE	
House	261m ²
Covered Verandah and Entrance	53m ²
Double Garage	53m ²
TOTAL	322m²
Dry Yard	34m ²



Book a Viewing

joinus@olivewoodestate.com | 087 350 4310

www.olivewoodestate.com



Darryl Jackson
082 563 2843
darryl.jackson@pamgolding.co.za

Sean Coetzee
082 441 8303
sean.coetzee@pamgolding.co.za

*Developers reserve the right to alter any information within this document subsequent to the year 2020.
Artist impressions may show additional features that are not included in the base pricing.*

Nominated Architectural Firm:
DMV Architects

